

RPU Plugged In

RPU'S ANNUAL WATER EDITION

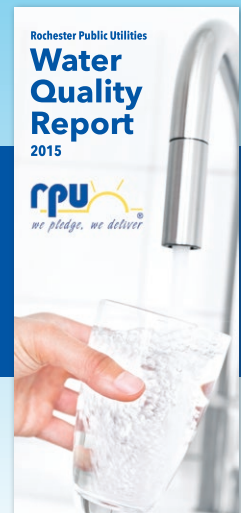


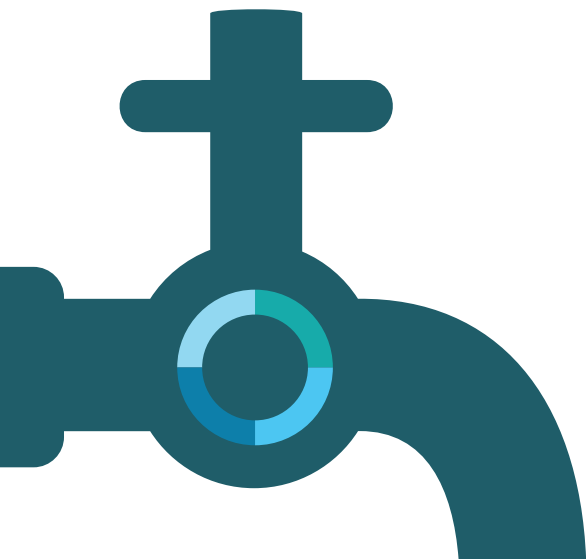
H₂O



WATER QUALITY
REPORT 2015

READ MORE ON PG 4





The list can go on and on, but you get the idea – Rochester's water continues to be a safe choice for great tasting water. As news reports continue about unsafe and poorly managed water utilities in the area and across the nation, here are a few reasons why RPU water is still as safe as it's always been.

Safe drinking water doesn't just happen, though. There is a lot of work that goes on – behind-the-scenes – to ensure the delivery of safe drinking water to Rochester residents. Here are some bullet points of information to help you better understand the RPU water system.

ROCHESTER'S
WATER CONTINUES
TO BE **SAFE,**
GREAT-TASTING,
INEXPENSIVE,
RELIABLE,
SUSTAINABLE...

Rochester's water source is the Jordan Aquifer, which is historically of high quality and low in nitrates and lead.

- RPU pumps water from 31 deep groundwater wells located throughout Rochester. The wells range from 400-1,000 feet deep.

Fun Fact: The only RPU water tower in town to be painted a different color than light blue will be the new St. Bridget Tower in southeast Rochester (see page 6).

RPU treats the groundwater before it is pumped into the distribution system by adding:

- Fluoride – All municipal water utilities are required by the state of Minnesota to add fluoride to the drinking water. The addition of fluoride is to promote strong teeth.
- Chlorine – The addition of chlorine gas disinfects drinking water and minimizes the chance for any bacteria, viruses, or fungi to appear in the water distribution system.
- Polyphosphate – This is added for corrosion control and helps to prevent "rusty" water.
- Water is tested at numerous locations multiple times each week to ensure safety.

RPU'S BACKFLOW PROGRAM

Providing safe, reliable drinking water is the highest priority for Rochester Public Utilities (RPU) Water Division. RPU follows strict state and federal standards to ensure that the public drinking water supply remains safe. Included in the state standards are the statutes adopted by the legislature and the rules promulgated by the Plumbing Board and

the Commissioner of the Department of Labor and Industry. There is one new change in the MN Plumbing Code that will apply to RPU residential water customers who have irrigation systems. All backflow preventers on irrigation systems need to be tested annually by a license-certified tester of their choice.

So how do you know if you need or have a backflow preventer(s) that would be subject to the annual inspection?

Backflow preventers are generally required in residential situations when a property has an irrigation sprinkler system. RPU also requires

Current water sustainability studies have shown that the Jordan Aquifer in Rochester will provide a high-quality, long-term source of supply for future generations.

The St. Bridget Tower (see page 6) will have the same capacity as the Apache Tower at 500,000 gallons. This is relatively small in comparison with the capacity of the 50th Avenue NW Hydropillar, which has a capacity of 2 million gallons and the reservoir near the St. Mary's campus at 3.3 million gallons.

RPU has over 587 miles of distribution water main to maintain.

- Water operators and water distribution workers are available 24/7 to address water main breaks that need repair. This shortens the time that affected customers are without water, if they are without water at all.

In 2015, RPU pumped over 4.3 billion gallons of water for Rochester residents and businesses.

- The average daily pumpage for RPU was 12,126,000 gallons per day!

Safety is of paramount importance at RPU, and we are proud to share that the last OSHA Recordable Injury in the water department occurred on January 3, 2013.

DRINKING WATER WEEK 2016

American Water Works Association (AWWA) National Drinking Water Week is May 1-7 this year. For more than 35 years the AWWA and its members have celebrated Drinking Water Week – a unique opportunity for both water professionals and the communities they serve to join together in recognizing the vital role water plays in our daily lives.

This year, RPU is celebrating National Drinking Water Week by giving away 250 RPU water bottles! Refill your FREE water bottle anytime with RPU's great-tasting drinking water. Just cut out the coupon and bring it into the RPU service center for your free water bottle.

Available while supplies last. One coupon per RPU account. Expires May 31, 2016.

In celebration of...
**Drinking
Water Week
May 1-7, 2016**

Bring in this coupon for a
**FREE RPU
WATER
BOTTLE!**

Bring coupon into the RPU Service Center at 4000 East River Road NE. One coupon per RPU account. Expires after first 250 coupons are redeemed or by May 31, 2016.



all commercial and industrial water customers to have backflow prevention at the water service entrance to the premise, near the RPU water meter. To be more technical, these backflow assemblies include:

- Spill Resistant Vacuum Breakers (SVB)
- Pressure Vacuum Breakers (PVB)

- Double Check Valves (DCV)
- Reduced Pressure (RP) assemblies

Proper backflow prevention on cross connections with these assemblies can eliminate contaminants from entering our public water supply. This helps ensure that contaminated or

polluted water cannot backflow into RPU's water system.

If you have any questions or would like more information regarding backflow prevention, please visit the RPU website at <https://www.rpu.org/environment/water-quality/backflow.html>.

Water Quality Report 2015

Municipal water utilities, including RPU, are highly tested and scrutinized for safety and quality. In accordance with the Environmental Protection Agency's (EPA's) Safe Drinking Water Act (SDWA), the testing results over the past year are compiled and made available for the public. Each May, RPU releases the Water Quality Report publicly.

This year, we are pleased to announce that water provided by RPU again met all state and federal drinking water standards.

A complete version of the Water Quality Report can be found on RPU's web page located at: <http://www.rpu.org/environment/water-quality/>. Questions and requests for a hard copy version of the 2015 water quality report can be directed to Todd Osweiler at **507.280.1589**.



Photo by Josh Banks

An aerial photo of the 3.3 million gallon capacity hypopillar in northwest Rochester.

Rochester Public Utilities

Water Quality Report 2015



Leaving Town or Moving?

In all of the hustle and bustle of leaving town remember that it's important to contact RPU if you will be away for an extended period of time. Whether it's a long vacation, a trip to the cabin, or you're going away for the summer, notifying RPU may protect you from false meter readings or possible service issues that could arise while you are away.

If you are a renter or homeowner and are moving away permanently, it is your responsibility to notify RPU to cancel your account. You will be responsible for additional usage and charges if you fail to contact RPU.

Please make sure to contact RPU customer service to let them know that you will be away from your residence and your account will be noted while you are away. Contact RPU at **507.280.1500** or stop in the RPU service center during business hours.

If you have a new phone number, please call RPU to update it.



WATER CONSERVATION

Monthly Tip on Saving From the Tap...



Put a rain barrel on your downspouts to collect rainwater to use on your garden, lawn and trees. Estimates indicate that a quarter-inch of rain falling on an average home yields over 200 gallons of water!



CONSERVE & \$AVE

ATTEND A FREE ENERGY EFFICIENCY WORKSHOP AND QUALIFY FOR A \$50 HOME ENERGY AUDIT! (\$400 value!)

LAST CHANCE!

Only One Scheduled Workshop Left!

REGISTER TODAY!

LAST SCHEDULED WORKSHOP:

Tue 05.17.16 • 6:30pm • George Gibbs Elementary

TO RESERVE YOUR SPOT CONTACT:

Stacy Boots Camp
888.734.6365
sbootscamp@mncee.org



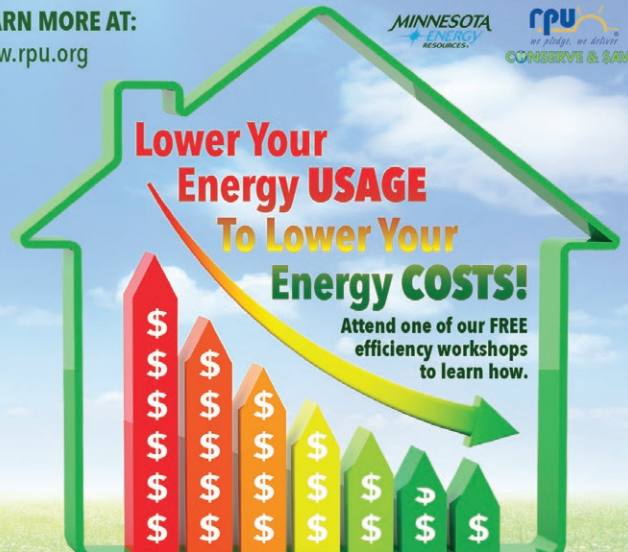
LEARN MORE AT:

www.rpu.org



Lower Your Energy USAGE To Lower Your Energy COSTS!

Attend one of our FREE efficiency workshops to learn how.

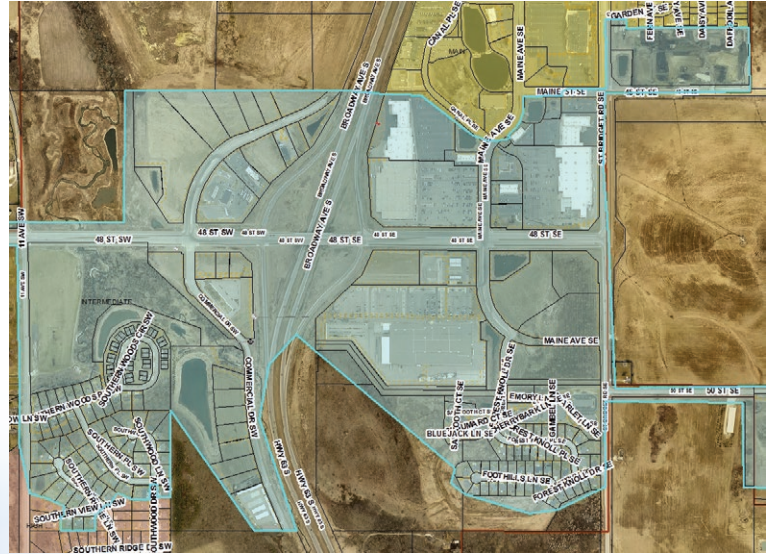


St. Bridget Water Tower Progress Photos

The new 500,000 gallon St. Bridget water tower will serve the St. Bridget Intermediate Zone, which includes the commercial development adjacent to the Highway 63/48th Street SE interchange, with a north boundary at approximately 45th Street SE and the surrounding area near the new tower.

The tower is being constructed by Chicago Bridge and Iron Company at a cost of \$1,139,000. The tower is paid for by the Water Availability Charges, which are paid by new development.

The in-service date for the new water tower is scheduled for mid-July 2016.



This map shows the approximate service area for the St. Bridget water tower when it goes into service in mid-July 2016. The tower will be located just east off of 50th Street SE near the Olmsted County Highway Department site.



Photos by Josh Banks



Water and Energy Conservation Experts Available to Help

If you have questions regarding RPU's Conserve & Save® rebate program, contact one of RPU's water and energy conservation experts today!

CONSERVE & \$SAVE®



RESIDENTIAL CUSTOMERS

Stephanie Humphrey
Residential Account Representative
shumphrey@rpu.org
507.280.1639



COMMERCIAL CUSTOMERS

Dirk Bierbaum
Energy and Environmental Advisor
dbierbaum@rpu.org
507.292.1225



COMMERCIAL CUSTOMERS

Dru Larson
Energy and Environmental Advisor
dlarson@rpu.org
507.280.1607



COMMERCIAL CUSTOMERS

Jan Blevins
Commercial Account Representative
jblevins@rpu.org
507.280.1578



COMMERCIAL CUSTOMERS

Abe Luhmann
Energy and Environmental Advisor
aluhmann@rpu.org
507.280.1559

AC Clean + Tune = Efficiency + \$25 Rebate

Regular preventative maintenance
is the best way to ensure
trouble-free, energy-efficient operation.

**Complete a Central Air Conditioner
Clean & Tune and apply for a
\$25 Rebate!**

Visit www.rpu.org to download a
rebate application with complete
terms and conditions; some
exclusions apply.



CONSERVE & \$SAVE®



4000 East River Road NE
Rochester, MN 55906
507.280.1500
www.rpu.org

PRESORTED
STANDARD
US POSTAGE
PAID
BlueSpire



RPU Service Center Holiday Hours

The RPU Service Center
will be closed on:

Monday, May 30,
in observance
of Memorial Day



Cool for You. Cool for the Planet.

energystar.gov/FlipYourFridge

More than 60 million refrigerators in the United States are over 10 years old, costing consumers \$4.7 billion a year in energy costs! Replace your old refrigerator with a new ENERGY STAR® certified model and save energy and money. Plus, you can get rebates from RPU!

REFRIGERATOR REBATE: \$25 BONUS RECYCLE REBATE: \$15*

To apply for your rebate, visit www.rpu.org
and download an Electric Rebate Application with complete terms and conditions.

CONSERVE & \$AVE®

* not to exceed \$15 or actual cost; only with recycling of working unit.