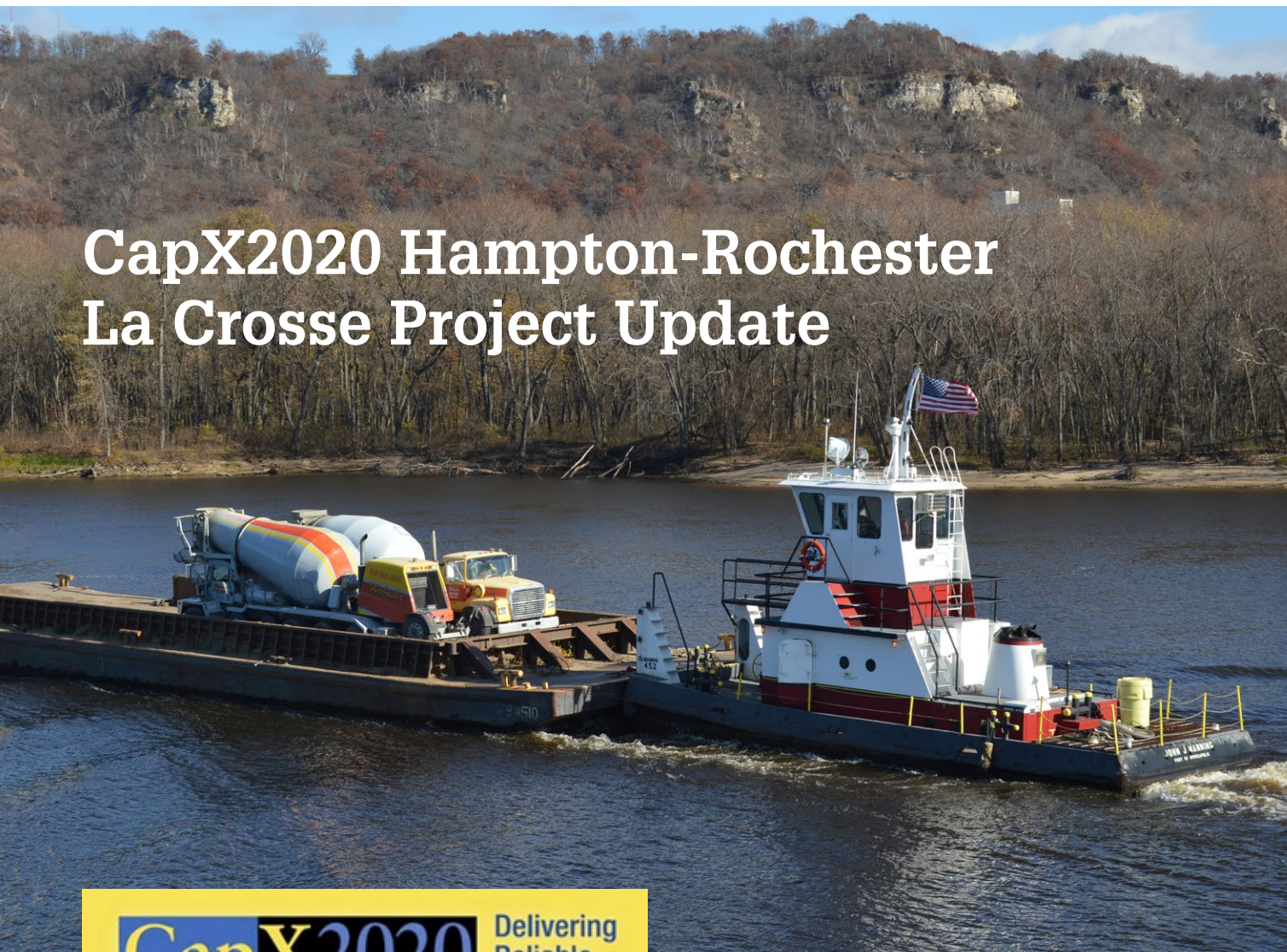


RPU Plugged In

CapX2020 Hampton-Rochester La Crosse Project Update



CapX2020

Delivering
Reliable
Electricity



CapX2020 Hampton-Rochester-La Crosse Project Transmission Construction @ Work

Work on the 150-mile CapX2020 Hampton-Rochester-La Crosse transmission line project continues to make its way through the Rochester area. Foundation construction began in February on a 12-mile 161 kilovolt (kV) line running from east of Rochester to Farmington Township. A second 16-mile 161 kV line that runs between the Pine Island area and northwest Rochester was completed in August 2013 and energized in May 2014. The new transmission lines will ensure reliable electricity for Rochester and surrounding areas, and help meet regional energy policy goals, including renewable energy mandates.

Construction on the 345 kV segment between Pine Island and the Mississippi River was completed in late 2014, and work on the 50-mile 345 kV segment in Wisconsin is also underway with completion scheduled for fall 2015.

The transmission line spanning the Mississippi River between the Minnesota and Wisconsin border near Wabasha, Minnesota, and Alma, Wisconsin, was completed in January. The work required building structures on an island and peninsula only accessible by boat and barge.



Hundreds of concrete trucks, cranes, and structure pieces were transported by barge to the island and peninsula on the Mississippi River.

Rochester Public Utilities is one of five partners on the CapX2020 Hampton-Rochester-La Crosse project, including Xcel Energy, Dairyland Power Cooperative, Southern Minnesota Municipal Power Agency, and WPPI Energy. Xcel Energy is the development manager on the \$500 million project. The entire project is expected to be energized in 2016.

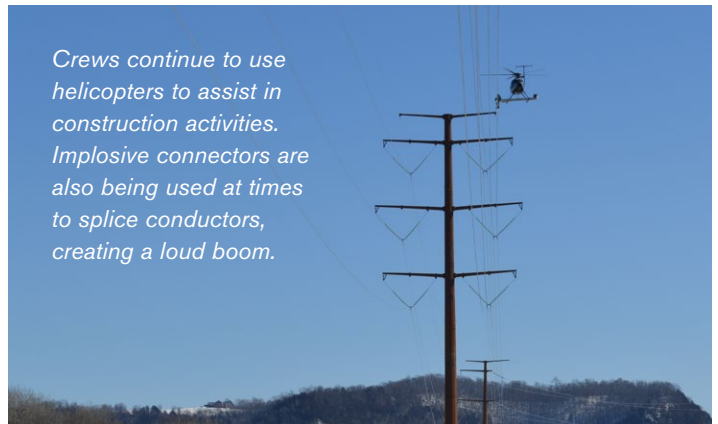
View videos and more details on the CapX2020 projects at www.capx2020.com.



The teeth on the driller need to be replaced constantly as crews are drilling and setting structures in Olmsted County.

BY THE NUMBERS:

1,113 structures and 150,000 cubic yards of concrete are being used on the 150-mile project.



Crews continue to use helicopters to assist in construction activities. Implosive connectors are also being used at times to splice conductors, creating a loud boom.

The CapX2020 project is the largest development of new transmission in the Upper Midwest in 40 years, including four 345 kV transmission lines and a 230 kV line. The lines are projected to cost more than \$2 billion and cover a distance of nearly 800 miles.

Get All of Your Lighting Questions Answered!

Stepping foot in the lighting aisle of a store can be a daunting task.

There are hundreds of different types of light fixtures and bulbs to choose from, so we want to help simplify things for you. We took some time to sit down with RPU's residential account representative, Stephanie Humphrey, to get her thoughts on energy-efficient lighting and what questions she is hearing from customers.

Q Is LED (light emitting diode) the way to go for bulbs?

A. The energy savings can't be beat and the prices have come down significantly. Add in RPU's Conserve & Save® rebate of 50% of the cost*, you can't go wrong with at least trying an LED bulb.

Q What difference in light will I notice?

A. LEDs come in a variety of different light options. At your local retailer or lighting specialty store, you will be able to see a number of different lights including warm white, natural daylight, and bright white. It really depends on what kind of light you are used to and the tasks you are doing with the light.

Q What incandescent bulbs are being phased out?

A. In 2012, the 100-watt and 75-watt bulbs were discontinued and then at the beginning of 2014, the 60-watt and 40-watt bulbs were discontinued. This was due to new federal energy efficiency standards for lighting.

Q If I am going to try one LED bulb in my house, where do you suggest I put it?

A. My recommendation is to try it in your most-used lamp or fixture in your house. If you like the light, you can always go and buy more.

Do I need to worry about mercury in LEDs?

Q A. Not in LEDs. There is no mercury in LEDs, but there is in compact fluorescent light bulbs. Those are also an energy-efficient light bulb option, but discarding those bulbs requires recycling them at a specialized location that can handle the mercury content.

Q Why choose Energy Star® bulbs?



Energy Star® lighting is tested and proven to be energy efficient and meets the requirements for RPU's Conserve & Save® rebate program. Visit the Energy Star® website, www.energystar.gov for more information.

For complete lighting rebate details, visit www.rpu.org or call RPU at 507.280.1500.

* For lighting rebates, see application for minimum efficiency requirements and complete terms and conditions.

ADMISSION IS FREE!

*RPU's 13th
Annual*

Arbor Day Celebration

Friday, April 24, 2015

Three Links – Silver Lake Park

11am–1pm

Rain Location: RCTC's Field House

QUESTIONS: Stephanie Humphrey • 507.280.1639

MORE INFORMATION: www.rpu.org

*FREE Food**

*FREE Trees**

*Giveaways**

Tree Experts On Hand

Live Music & Family Activities

Poster Contest Winners Awarded

**while supplies last*

**SPONSORING
PARTNERS:**



Maier
TREE & LAWN
a **DAVEY** company



CO-SPONSORS:



PARTICIPANTS: • Boys & Girls Club of Rochester • Minnesota Department of Natural Resources •
• Olmsted County Environmental Resources • Olmsted Soil & Water Conservation District •
• Quarry Hill Nature Center • Rochester Public Library • Rochester Public Works • Zumbro Valley Audubon •

St. Bridget's Water Tower Construction

In order to continue serving Rochester with safe, reliable drinking water, a new water tower will be built in southeast Rochester this year. The 500,000 gallon water tower will have the same capacity of the Rose Harbor water tower (near Eastwood Golf Course) and will stand three feet taller than Rose Harbor at 111 feet tall.

The land for the water tower was acquired back in December 2011, with the anticipation of growth and population expansion in that area. At the February RPU Board meeting, the anticipated project timeline and budget were shared.

Project Budget

500,000 Gallon Water Spheroid Tank Construction

• Estimated Tank Construction =	\$1,425,000
• Estimated Trunk Main Construction =	\$100,000
• Engineering =	\$76,800
• Real Estate Purchase =	---
• RPU Budget =	\$1,420,000
• Water Availability Charge (WAC)	
Funds Available =	\$2,800,000

As the project moves forward, we will include progress pictures in future editions of *RPU Plugged In*.



Image of how tower will look on proposed site.

Anticipated Project Timeline

Site Selection Completed	Dec 2011
RPU Selected Designer/Engineer WHKS	Dec 2014
Project Construction Plans Completed	Feb 2015
Soil Borings Completed	Feb 2015
Public Information Meeting	Mar 2015
Project Bid	Apr 2015
RPU Board & City Council Approval	Apr-May 2015
Project Construction Begins	Sep 2015
Project Construction Completed	Jun 2016

Spring into ENERGY EFFICIENCY!

ATTEND A FREE ENERGY EFFICIENCY WORKSHOP AND QUALIFY FOR A \$50 HOME ENERGY AUDIT*

Tuesday 04.07.2015

6:30 pm • Lincoln Choice Elementary School

Tuesday 05.12.2015

6:30 pm • George Gibbs Elementary School

**TO RESERVE
YOUR SPOT CONTACT:**

Hannah Strong
888.734.6365
hstrong@mncee.org

**LEARN MORE AT:
www.rpu.org**



At the Neighborhood Energy Challenge workshop, we learned new things and realistic suggestions for our home... Our energy auditor was professional and easy to work with... The knowledge we acquired, from both the workshop and energy audit, has aided us in implementing conservation and energy efficiency improvements to our home.

– Tony & Lynne Drumm
Rochester Homeowners

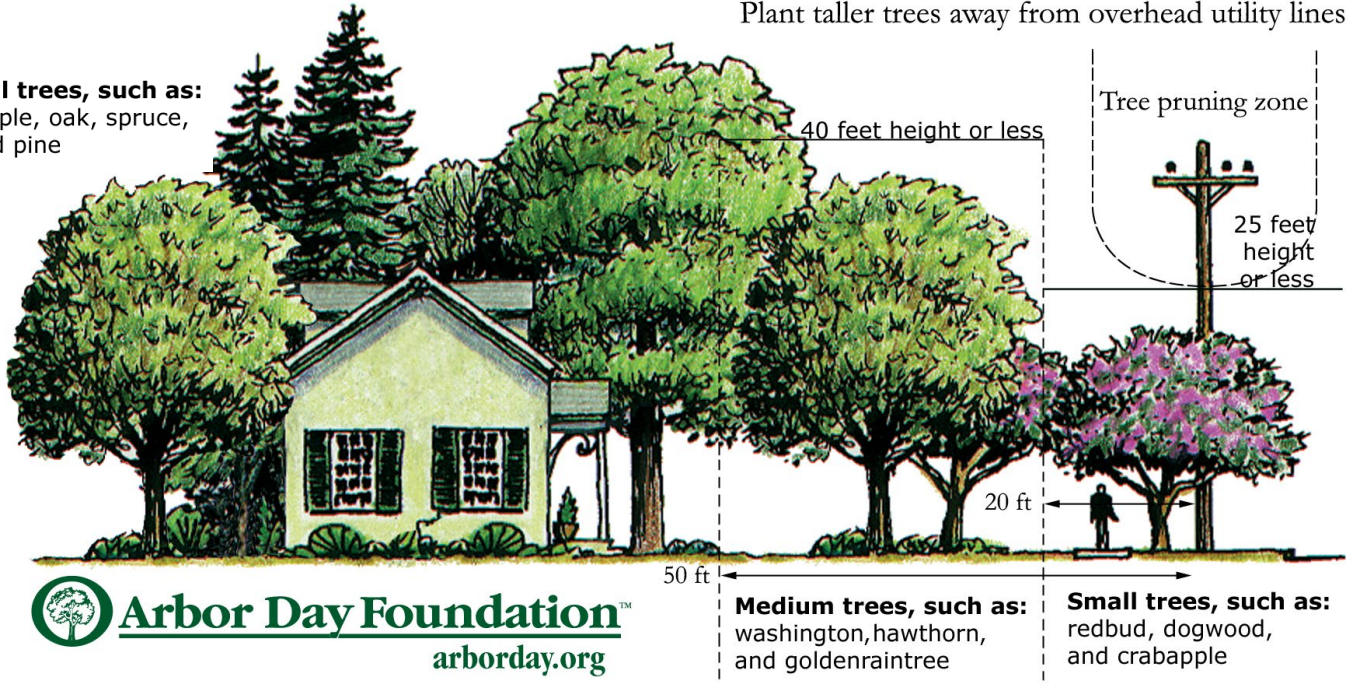


(*Audit has a \$400 value)

Plant the right tree in the right place

Plant taller trees away from overhead utility lines

Tall trees, such as:
maple, oak, spruce,
and pine



THE RIGHT TREE IN THE RIGHT PLACE

When planting a tree in your yard, it is important to take into account the type of tree you are planting, the location, and the function for the tree. All of these items feed into the Arbor Day Foundation's education for The Right Tree in the Right Place. Planting a large tree under or near overhead power lines will require future maintenance

of the tree, including pruning to an unnatural size and shape or possibly even removal of a healthy tree. Large trees near overhead lines cause a major issue for electric reliability and for safety.

Always consult with your local tree expert or contact RPU before planting trees near overhead lines.

Partners *in Planting*

\$10 NURSERY COUPON

**GOOD FOR \$10 TOWARD THE PURCHASE OF
ANY TREE PRICED AT \$75 OR MORE, FROM
JIM WHITING NURSERY OR SARGENT'S GARDENS.**

Must be an RPU customer to participate. One coupon per household.

Name: _____

Address: _____

City: _____ State: _____ Zip: _____

Phone: () _____ Email: _____

Type of tree purchased: _____ Size of tree purchased: _____ Planting distance from house: _____

On which side of your home will you be planting the tree? ☐ north ☐ south ☐ east ☐ west

Jim Whiting
Nursery & Garden Center

www.jimwhitingnursery.com
3430 - 19th St NW • 289.3741

SARGENT'S
Gardens

www.sargentsgardens.com
7955 - 18th Ave NW • 289.0022
1811 - 2nd St SW • 289.6068

rpw
we pledge, we deliver®

CONSERVE & \$AVE™

In support of RPU's
Partners in Planting program.

CALL BEFORE YOU DIG









As you are plotting out your tree plantings, landscaping, or maybe even a new deck or play area, remember to always *Call Before You Dig* this spring. Gopher State One Call is a free utility locating service.

Gopher State One Call is an important service to help keep customers and utility workers safe. It's not only quick and easy; it is also your responsibility as a homeowner.

Color Code Chart

The American Public Works Association encourages public agencies, utilities, contractors, associations, manufacturers, and all others involved in excavation to adopt the ULCC Uniform Color Code using the ANSI standard Z53.1 Safety Colors shown below. These colors are used to mark the various underground utilities that may be found during a dig. Flags or paint are examples of materials that are used to mark areas using the colors below.



 Electric	 Reclaimed Water-Irrigation
 Gas-Oil-Steam-Propane	 Sewer
 Communication-CATV-Fiber	 Temporary Survey Markings
 Water	 Proposed Excavation

www.gopherstateonecall.org
1.800.252.1166

Partners in Planting

\$20 ARBORIST COUPON

Submit to Maier Tree & Lawn for \$20 OFF the purchase of any tree care service.*



Maier

TREE & LAWN

a **DAVEY**  company

3930 Hwy 14 E • Rochester, MN 55904

507.286.TREE (8733) • www.MaierTreeandLawn.com



* This coupon is offered in support of RPU's Partners in Planting program. Must be an RPU customer to participate. One coupon per household. Offer valid on arborist services over \$200. Not good with other discounts or promotions. Must be presented at time of sale. Refunds not available.

0315



Bigger Rebates

FOR CLOTHES WASHERS & DISHWASHERS



Most Efficient
2015
www.energystar.gov



When you purchase a new appliance, look for the ENERGY STAR Most Efficient label.

Bigger and better efficiency equals bigger and better rebates from RPU!

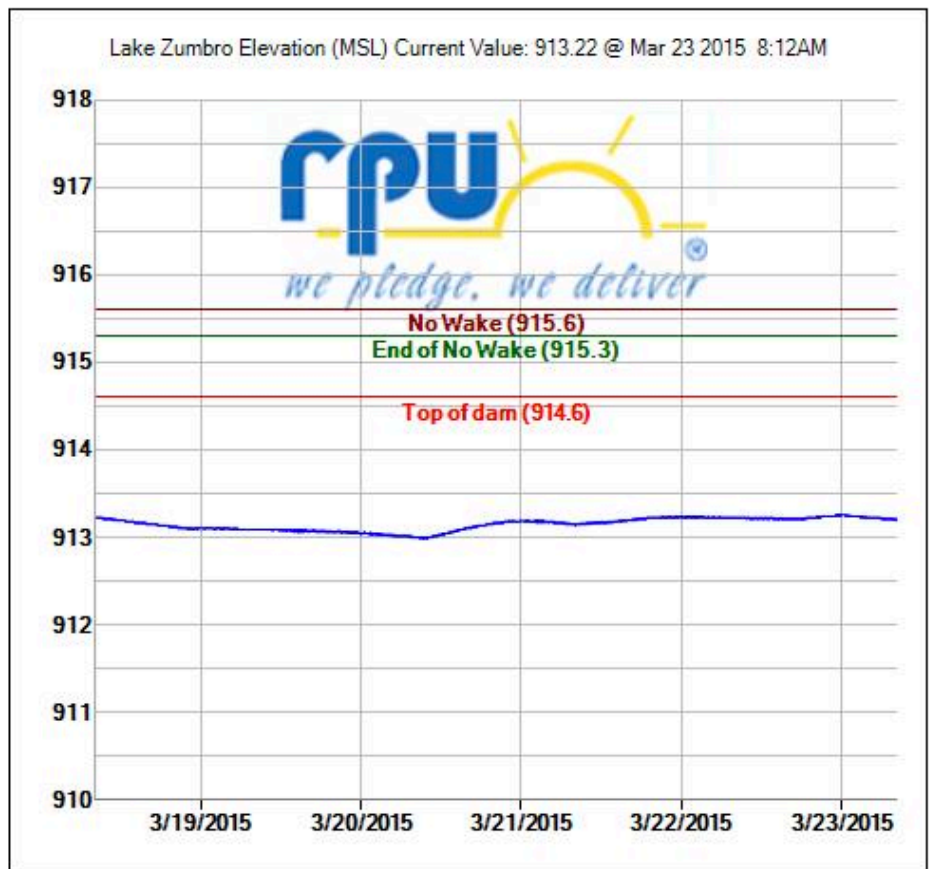
You'll get an extra \$50 electric rebate on clothes washers and an extra \$15 on dishwashers. To download a rebate application with complete terms and conditions, visit www.rpu.org.

CONSERVE & \$AVE®



4000 East River Road NE
Rochester, MN 55906
507.280.1500
www.rpu.org

PRESORTED
STANDARD
US POSTAGE
PAID
BlueSpire



Lake Zumbro Spring and Summer Pool

The level of Lake Zumbro will be raised from winter pool (913.0 MSL) to the normal summer pool (914.5 MSL) beginning March 23, 2015. It will take approximately one week for the gradual transition to summer pool to be completed. Lake Zumbro will be maintained at normal summer pool (914.5 MSL) throughout the rest of the spring and summer season, to the extent possible. However, the public should be aware that the Zumbro Hydroelectric Plant has extremely limited capacity to pass flood flow, resulting in occasional high water events that exceed normal pool.

Real-time lake level information is available on the RPU website, www.rpu.org. For additional information regarding the Zumbro Dam and Hydroelectric Facility, please contact Tony Benson at **507.280.1534** or Todd Osweiler at **507.280.1589**.

Be Sure to Join Us!
RPU's 13th Annual Arbor
Day Celebration

Friday, April 24
11 am – 1 pm
Three Links – Silver Lake Park
Rain Location: RCTC's
Field House

* See full details inside on page 4.