



ROCHESTER
PUBLIC UTILITIES
WE PLEDGE, WE DELIVER™

Plugged In

RPU's New Electric Vehicle Program

Details on page 2

NOV / DEC
2023



Scan to visit rpu.org
and learn more about
Electric Vehicles:



RPU's New Electric Vehicle Program

RPU has launched a new electric vehicle (EV) program to help customers save money by shifting their charging to off peak hours. The new program offers a low rate of electricity for overnight EV charging, plus a \$200 one-time enrollment bill credit. No additional metering infrastructure is required and both all-electric and plug-in hybrids qualify for this program.

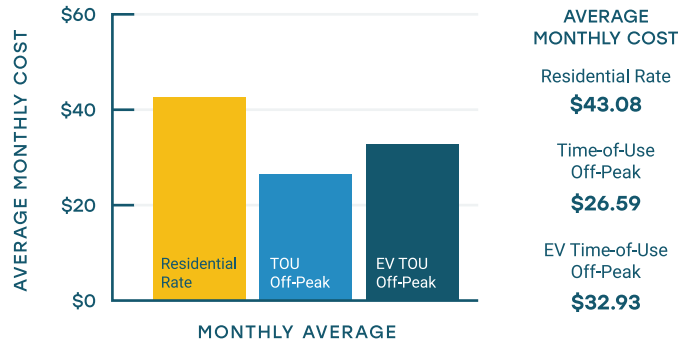
Come in to the RPU Service Center and
**PICK UP YOUR FREE
RPU 2024 CALENDAR!***

If your child was a winner or participated in the 2023 Arbor Day poster contest, their artwork may be in our calendar!

FEATURING:

- 2023 Arbor Day posters drawn by Rochester area elementary school children
- Monthly energy and water conservation tips

*limit one per customer; while supplies last



Annual savings from overnight charging will vary based on the number of miles driven. For a customer who drives 13,000 miles a year, the cost-savings from shifting to overnight charging are approximately \$150-\$200 per year. Overnight EV charging helps customers save money and helps RPU save energy since demand is lower at night and wind resources are abundant.

This program is a great option for customers who can schedule their EV to charge overnight between the hours of 10 PM and 8 AM. Also, since no additional metering infrastructure is required, home charger installation costs can be kept to a minimum. Please visit our EV webpage for additional information or to sign up.



RPU Lineworkers Recognized for Efforts at MMUA's 2023 Lineworker Rodeo

Each year the Minnesota Municipal Utilities Association (MMUA) hosts the Lineworkers Rodeo to test the skill and safety of lineworkers from across the state of Minnesota. The event is held at the MMUA Training Center in Marshall, MN and includes events such as Hurtman Rescue, Obstacle Course, and Phase Tie-In.

RPU had lineworkers place in both the Journeyman and Apprentice divisions this year.



Chad Grinhaug

2nd Place Hurtman Rescue
2nd Place Phase Tie-In



Matt Tupper

3rd Place Overall
2nd Place Obstacle Course



Chad Peterson

2nd Place Overall
1st Place Hurtman Rescue
3rd Place Obstacle Course
3rd Place Phase Tie-In



Spencer Defrang

3rd Place Overall
2nd Place Phase Tie-In
3rd Place Obstacle Course

LED Light Bulbs

FINAL YEAR!

Be Bright this fall!

Through December 31, while supplies last, our residential electric customers are eligible for reduced pricing on ENERGY STAR® qualified LED light bulbs from the local retailers listed below.

ENERGY STAR-labeled LEDs use 80% less energy and last up to 25 times longer than incandescent light bulbs. But less watts doesn't mean less light. By replacing the five most-used bulbs in your home with LEDs, you can save up to \$40 in energy costs during the first year alone.

This is our **FINAL YEAR** and supplies are limited so get your discounted LEDs before they sell out!

Arrow Ace Hardware
Batteries + Bulbs

Mills Fleet Farm
Walmart

Costco
Home Depot

Discounted LEDs purchased during this promotion are not eligible for utility rebate.



Please be alert and aware of RPU work zones this winter. Work zones will be marked with orange cones and orange signage to clearly identify the area. Use caution in and around the marked areas.

The families of RPU water and electric workers thank you for helping to ensure that their loved ones make it home safe at the end of their work day.



Quick Guide to Power Outages (and How RPU Takes Action)

Reliable electricity is what we all want. When there's a service interruption, it is an inconvenience for everyone, but our RPU team is on top of the causes and the best fixes.

There are several leading causes of power outages:

- Tree contact onto the power line
- Lightning strikes to the power line
- Animal contact onto the power line (squirrels, raccoons, large birds)
- Damages to poles and other equipment resulting from human actions

Tree Contact

A key focus area to minimize outages is to reduce the likelihood of trees contacting the power lines. RPU budgets approximately \$1.7 million in tree trimming work each year by contracting with several professional tree trimming contractors to accomplish the work safely. Trees that encroach into the power line right-of-way or easement are trimmed to the maximum limits of what is allowed by law. At times, the width of the easement is insufficient compared to the size of the trees. In those cases, RPU seeks additional permission

from the property owner to trim a greater distance. In this way, RPU is taking proactive steps to minimize outages caused by trees. Remember, it's possible you may not have a power outage, but rather experience flickering. This, too, may be caused by tree limbs making contact with overhead lines. This movement may not be enough to cause an outage, but can cause lasting damage or a future dangerous situation.

Lightning Strikes

With wind and storms, lightning becomes a concern as well. Lightning can cause outages and damage to an electric system. One lightning strike can take out a large section of customers if it damages certain parts on a transmission or distribution pole.

Animal Interference

Rochester is home to a healthy variety of natural environments, which means animal life and habitats. Animals cause a significant number of outages each year—both on the RPU system and for utilities across the nation. There are safety measures in place, and specialty equipment used, such as squirrel guards. These simple pieces of equipment help to deter



squirrels from climbing near the energized components of distribution poles and preventing outages.

Vehicle Damage

Inattentive driving, medical emergencies, ice, and speeding are just a few of the human factors that can cause a vehicle to hit an RPU pole or pad-mount transformer. These types of impacts on RPU equipment can cause lengthier outages due to the scope of damage, the required safety measures to remove damaged equipment, and restoration.

As frustrating as power outages are, please remember the lineworkers who get called in to safely restore power deserve respect. Our lineworkers care about the work they do each day, and routinely leave their families at home to enter unsafe situations to proactively prevent outages and restore power.

To report an outage, call RPU at 507-280-9191 or visit [rpu.org/outages-safety.php](https://www.rpu.org/outages-safety.php).



Compressed Air Leak Correction Rebate Program

Why perform a compressed air leak detection survey?

Compressed air is not free! It may be viewed as a utility much like water, electricity, or gas. According to the US Department of Energy, compressed air is the most costly utility in plants today. It is estimated that the average industrial customer wastes 20%-30% of their compressed air to air leaks. By routinely detecting and fixing air leaks, most companies can reduce leakage to 10% or less and realize large cost savings and almost immediate payback. Any company committed to reducing operating costs should conduct compressed air leak detection surveys.

This is how RPU can help!

If you are an electric customer of RPU with at least 10 horsepower (hp) of air compressors that operate at least 2,000 hours per year, RPU can provide you the use of an ultrasonic leak detector for free!

The UltraView Leak Detection Camera is easy to operate, and comes with instructions on how to use the detector to quickly locate leaks without shutting down your processes. After locating your air leaks, the app will provide a detailed report with potential savings from each repaired air leak. Your savings of energy and operational costs can begin immediately, since most air leaks can be corrected as they are located. Implementing an annual leak correction maintenance program will also result in continuous savings.

Rebates are available!

Rebates of \$4-\$9 per hp of air compressor capacity (excluding backup capacity) are available to RPU customers who document and verify that they have fixed at least 50% of the compressed air leaks identified during a leak survey. Customers can self-survey or hire a contractor. The more leaks you repair, the larger your rebate! For example, with 50 hp of air compressors, operating more than 2,000 hours per year, the rebate for repairing at least 50% of the air leaks identified in a survey would be \$200. Repairing 100% of the leaks would maximize your annual savings and your rebate would be \$450. When combined with the energy savings, the typical payback for surveying and repairing compressed air leaks is only a few months!

How to get started

To learn about program details and reserve the UltraView Leak Detection Camera, call your RPU Energy and Environment Advisor at 507-280-1500 or email REBATES@rpu.org. You may borrow the detector for one week to locate your leaks and another week to verify your leak repairs.

CONSERVE & \$AVE™

LOOKING FOR WAYS TO MAKE YOUR HOME MORE ENERGY EFFICIENT?

Attend one of our FREE efficiency workshops. Learn low/no-cost ways to save and qualify for a \$50 home energy audit (\$400 value). Learn more at www.rpu.org.

Sat, Nov 18, 2023

-OR- Sat, Jan 27, 2024

10:00-11:00am

****Free Childcare Provided**

To register, email or call Stacy:

sbootscamp@mncee.org

888-734-6365



MINNESOTA
ENERGY
RESOURCES

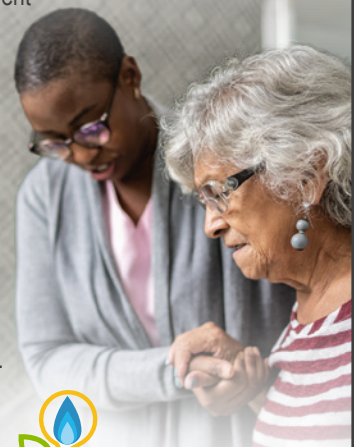
ROCHESTER
PUBLIC UTILITIES
WE PLEASE, WE DELIVER

One of our **CONSERVE & \$AVE™** programs.

4U2 and Energy Sustainability for our Elderly

RPU and Minnesota Energy Resources are committed to making energy efficiency improvements affordable for income-qualified customers. The 4U2 program helps eligible low-income households improve their home's energy efficiencies while reducing overall energy costs. Energy Sustainability for our Elderly is a program designed to weatherize and update the equipment efficiencies in the homes of our qualified low-income elderly residents to improve their health, safety, independent living, and reduce energy burden.

To see if you qualify, fill out a 4U2 or Energy Sustainability for our Elderly Application, available at www.rpu.org. See the applications for full details.



4U2 PROGRAM

MINNESOTA
ENERGY
RESOURCES

ROCHESTER
PUBLIC UTILITIES
WE PLEASE, WE DELIVER



**Energy Sustainability
FOR OUR ELDERLY**

MINNESOTA
ENERGY
RESOURCES

ROCHESTER
PUBLIC UTILITIES
WE PLEASE, WE DELIVER

Due to new federal lighting standards

TIME IS RUNNING OUT FOR LED BULB REBATES!

**Rebates for screw base
LED bulbs for all
residential and
commercial
customers
will end
Dec 31, 2023.**

Apply before they
are gone! Download
a rebate application
with complete terms
and conditions:

www.rpu.org

C  **ONSERVE & \$AVE™**





DON'T THROW AWAY OLD HOLIDAY LIGHTS!

RPU will RECYCLE all of your old holiday light strands for FREE!

It's easy – bring your old holiday string lights and decorations into the RPU Service Center lobby (4000 East River Road NE) and drop them in the designated bins.

NOT ACCEPTED:

- Appliance cords
- Battery packs
- CFL lights
- Cord adapters
- Electric cords
- Plastic rope lights
- Telephone cords

Available now through Friday, January 26, 2024.



Celebrate with Savings!

BUY ENERGY EFFICIENT HOLIDAY LIGHTS OR DECORATIONS & APPLY FOR A REBATE:

1. Purchase new LED holiday plug-in (not battery or solar operated) lights and decorations by December 31, 2023.
2. Complete this coupon and submit it to RPU:
 - by March 31, 2024
 - with original sales receipt
 - with packaging showing the LED logo and number of lights per string (one package per type)
3. Rebate is limited to 50% of LED string or package cost, tax excluded, up to maximum amounts listed below.

Customer Name _____

Mailing Address _____

City _____

State _____

Zip _____

Installation Address (if different from above) _____

City _____

State _____

Zip _____

Contact Phone # (with area code) _____

☐ Home

☐ Cell

☐ Other: _____

Account # _____

☐ Residential

☐ Commercial

(Rebates under \$75 will be applied to your account.)

A Date Purchased (MM/DD/2023)	B Lamp Size	C # of Lamps per String	D Cost per Package	E Qty of Packages	F Total Cost of Packages (D X E)	G Rebate Amount	H Total Rebate (F X G) (up to max amounts*)	I OFFICE USE ONLY
____/____/2023	<input type="checkbox"/> Mini <input type="checkbox"/> Other		\$		\$	50%	\$	\$
____/____/2023	<input type="checkbox"/> Mini <input type="checkbox"/> Other		\$		\$	50%	\$	\$
____/____/2023	<input type="checkbox"/> Mini <input type="checkbox"/> Other		\$		\$	50%	\$	\$

Rochester Public Utilities
Attn: Rebate Processing
4000 E River Rd NE
Rochester, MN 55906-2813
507-280-1500
www.rpu.org
rebates@rpu.org

Recipient must be an electric customer of Rochester Public Utilities.
Valid only on purchases made by December 31, 2023.
All Utility Rebate terms and conditions apply.

*** Rebate is 50% of string or package cost (tax excluded), up to maximum amounts listed below:**

# of Lamps	Maximum Rebate per String
less than 99	\$3.00
100 - 199	\$6.00
200 - 299	\$9.00
300 or more	\$12.00

GRAND TOTAL REBATE:

\$

\$

OFFICE USE ONLY:

ID # _____

DATE Received _____

Date Processed _____



PRESORTED
STANDARD
U.S. POSTAGE PAID
ROCHESTER, MN
PERMIT NO. 4

4000 East River Road NE
Rochester, MN 55906
507-280-1500
www.rpu.org



Neighborly

RPU Plugged In is now designed
and printed locally in Rochester.



RPU Holiday Hours: Closed November 10, Closed November 23 and 24, Closed December 25

Social Media:



@rochesterpublicutilities



@rpuoutages / @rpualerts



Rochester Public Utilities



blog.rpu.org



@rpualerts



Rochester Public Utilities

Mobile App:



RPU Service Center: Hours
(8am - 5pm) Monday - Friday
Customer Care: 507-280-1500
Toll-Free: 800-778-3421
Pay By Phone: 855-631-3643
(toll-free • no fee • 24 hrs)
Electric Emergency:
507-280-9191 (24 hrs)
Water Emergency:
507-280-1500 (8am - 5pm)
507-280-9191 (5pm - 8am)

Plugged In is adding digital!

If you would like to join the digital mailing
list, scan this QR code.



SIGN UP TODAY!

Make It Easier with Paperless Billing & Autopay

Skip the envelope opening and paper accumulation by signing up for paperless billing today! Instead of receiving your RPU bill in the mail, you can choose to receive an email or text notification when your bill is available to view and pay securely through the RPU Connect portal and app.

You can also save time and ensure you never miss a payment by signing up for Autopay. Autopay automatically pays your bill on the due date each month directly from your bank account or credit card on file.

Why sign up for Autopay?

- It's free
- Saves time
- Saves money
- Ensures you never miss a payment –no matter where you are



For added peace of mind that your bill was paid, sign up to receive an email or text notification when a payment is posted to your account via the RPU Connect app.