



Printed on Recycled Paper 1023D  
The overall winner of the Arbor Day poster contest gets an honorary tree planted at their school. Children learned how to properly plant a tree during the 2022 ceremony.



**Partners in Planting**  
RPU encourages our customers to plant trees through our Partners in Planting program. We've partnered with American Public Power Association's (APPA) TREE POWER program - a nationwide effort by public power utilities to plant trees. And now we want to partner with YOU to plant trees all over Rochester! Visit our website for more information on Partners in Planting and to download coupons toward the purchase and care of a new tree.

**Before You Dig:** 800-252-1166  
Gopher State One Call  
507-280-9191 (5pm-8am)  
507-280-1500 (8am-5pm)  
**Water Emergency:** 507-280-9191 (24 hrs)  
**Electric Emergency:** 855-631-3643 (toll free • no fee • 24 hrs)  
**Pay By Phone:** 800-778-3421  
**Toll Free:** 507-280-1500  
**Customer Service:** 507-280-1500

**Mobile App:** RPU CONNECT  
Available on the App Store and Google Play

**Social Media:** @rpunoutages, @rpualerts, rochesterpublicutilities, www.rpu.org

**Website:** www.rpu.org

**Address:** 4000 East River Road NE, Rochester, MN 55906-2813

**Public Utilities**  
ROCHESTER  
WE PLEDGE, WE DELIVER™

Arbor Day is celebrated by millions of people across our country every year. It is a day that reminds us of the many benefits trees provide our community. Trees are an asset that have investment value: they conserve energy through shade and wind block, filter air pollution, reduce storm runoff, and increase property value.

Since 2003, Rochester Public Utilities (RPU) has involved the community in an annual Arbor Day celebration. As part of the festivities, a poster contest for Rochester elementary students is held. This calendar features entries from 2023. RPU would like to thank all of the students who have participated in our poster contest over the years. These talented young artists help remind us of the importance of trees in our community.



# 2024 CALENDAR

Featuring 2023 Arbor Day posters drawn by Rochester area school children and monthly conservation tips from RPU.



**TREES CLEAN THE AIR WE BREATHE!**

2023 OVERALL WINNER • Sophie Liu • 5th Grade • Washington Elementary • Mrs. Barlow



# RPU's 21st Annual Arbor Day Celebration

The 2023 RPU Arbor Day Celebration was held on Friday, April 28, 2023, by partnering sponsors – RPU, Maier Tree & Lawn, Rochester Parks & Recreation, and Sargent's Gardens. More than 2,200 local elementary students, educators, and chaperones gathered at Three Links-Silver Lake Park to have lunch and celebrate everything trees. In addition, hundreds of local community members came out to celebrate and to get a free tree seedling to plant themselves.

As part of the annual Arbor Day festivities, a poster contest is held for local elementary school students. This year hundreds of students submitted posters highlighting the theme, "Trees Clean the Air We Breathe!" Each year, the winners for each grade and an overall winner are selected and featured in the RPU calendar. The overall winner for 2023 was 5th grader Sophie Liu (pictured to the right) from Mrs. Barlow's class at Washington Elementary. Sophie's winning poster design is featured on the cover of this calendar.



## 2023 Poster Contest Winners

(left to right)

**FIRST GRADE**  
**Jacob Hansen**  
Ms. Schad  
Jefferson Elementary

**SECOND GRADE**  
**Lauren Winter**  
Mrs. Witter  
Gibbs Elementary

**THIRD GRADE**  
**Shaarav Nawale**  
Mrs. Seefeldt  
Washington Elementary

**FOURTH GRADE**  
**Stella Huelsbeck**  
Mrs. Osowski  
Jefferson Elementary

**FIFTH GRADE**  
**Eleanor Ribikawskis**  
Mr. Paul  
Bishop Elementary

**OVERALL WINNER**  
**Sophie Liu, 5th Grade**  
Mrs. Barlow  
Washington Elementary

### ARBOR DAY 2023 SPONSORING PARTNERS







# DECEMBER 2023



RPU Customer Care: 507-280-1500 • Website: [www.rpu.org](http://www.rpu.org)  
Electric Emergency: 507-280-9191 (24 hrs)  
Water Emergency: 507-280-1500 (8am-5pm) • 507-280-9191 (5pm-8am)

SUN	MON	TUE	WED	THU	FRI	SAT																																																																																				
<div>CONSERVE &amp; \$SAVE™ ENERGY TIP</div> <div>Use LED holiday lights and decorations. They are 75% more efficient and last up to 25 times longer. You can apply for a rebate from RPU on your purchase of new LED lights and decorations - up to \$12 per string!</div>		<div>NOVEMBER 2023</div> <table><tr><td>S</td><td>M</td><td>T</td><td>W</td><td>T</td><td>F</td><td>S</td></tr><tr><td></td><td></td><td>1</td><td>2</td><td>3</td><td>4</td><td></td></tr><tr><td>5</td><td>6</td><td>7</td><td>8</td><td>9</td><td>10</td><td>11</td></tr><tr><td>12</td><td>13</td><td>14</td><td>15</td><td>16</td><td>17</td><td>18</td></tr><tr><td>19</td><td>20</td><td>21</td><td>22</td><td>23</td><td>24</td><td>25</td></tr><tr><td>26</td><td>27</td><td>28</td><td>29</td><td>30</td><td></td><td></td></tr></table>	S	M	T	W	T	F	S			1	2	3	4		5	6	7	8	9	10	11	12	13	14	15	16	17	18	19	20	21	22	23	24	25	26	27	28	29	30			<div>JANUARY 2024</div> <table><tr><td>S</td><td>M</td><td>T</td><td>W</td><td>T</td><td>F</td><td>S</td></tr><tr><td>1</td><td>2</td><td>3</td><td>4</td><td>5</td><td>6</td><td></td></tr><tr><td>7</td><td>8</td><td>9</td><td>10</td><td>11</td><td>12</td><td>13</td></tr><tr><td>14</td><td>15</td><td>16</td><td>17</td><td>18</td><td>19</td><td>20</td></tr><tr><td>21</td><td>22</td><td>23</td><td>24</td><td>25</td><td>26</td><td>27</td></tr><tr><td>28</td><td>29</td><td>30</td><td>31</td><td></td><td></td><td></td></tr></table>	S	M	T	W	T	F	S	1	2	3	4	5	6		7	8	9	10	11	12	13	14	15	16	17	18	19	20	21	22	23	24	25	26	27	28	29	30	31					1	2
S	M	T	W	T	F	S																																																																																				
		1	2	3	4																																																																																					
5	6	7	8	9	10	11																																																																																				
12	13	14	15	16	17	18																																																																																				
19	20	21	22	23	24	25																																																																																				
26	27	28	29	30																																																																																						
S	M	T	W	T	F	S																																																																																				
1	2	3	4	5	6																																																																																					
7	8	9	10	11	12	13																																																																																				
14	15	16	17	18	19	20																																																																																				
21	22	23	24	25	26	27																																																																																				
28	29	30	31																																																																																							
3	4	5	6	7	8	9																																																																																				
				Pearl Harbor Remembrance Day Hanukkah Begins																																																																																						
10	11	12	13	14	15	16																																																																																				
17	18	19	20	21	22	23																																																																																				
		RPU Board Meeting 4pm • RPU Service Center		First Day of Winter																																																																																						
24	25	26 <div>Full Moon</div>	27	28	29	30																																																																																				
Christmas Eve	Christmas Day RPU OFFICES CLOSED	Kwanzaa Begins																																																																																								
31 New Year's Eve																																																																																										





1ST GRADE WINNER • Jacob Hansen • Jefferson Elementary • Ms. Schad

# JANUARY 2024



RPU Customer Care: 507-280-1500 • Website: [www.rpu.org](http://www.rpu.org)  
Electric Emergency: 507-280-9191 (24 hrs)  
Water Emergency: 507-280-1500 (8am-5pm) • 507-280-9191 (5pm-8am)

SUN	MON	TUE	WED	THU	FRI	SAT
<div>DECEMBER 2023</div> <div>S M T W T F S</div> <div>1 2</div> <div>3 4 5 6 7 8 9</div> <div>10 11 12 13 14 15 16</div> <div>17 18 19 20 21 22 23</div> <div>24/31 25 26 27 28 29 30</div>	1   <					





# FEBRUARY 2024



RPU Customer Care: 507-280-1500 • Website: [www.rpu.org](http://www.rpu.org)  
Electric Emergency: 507-280-9191 (24 hrs)  
Water Emergency: 507-280-1500 (8am-5pm) • 507-280-9191 (5pm-8am)

SUN	MON	TUE	WED	THU	FRI	SAT																																																																																				
<div>CONSERVE &amp; \$SAVE</div> <div>WATER TIP</div> <div>Replace old, inefficient toilets with WaterSense® labeled models, and you can reduce water usage by 20 to 60% – that's nearly 13,000 gallons per year! You can also apply for a \$25 rebate from RPU.</div>		<div>JANUARY 2024</div> <table><tr><td>S</td><td>M</td><td>T</td><td>W</td><td>T</td><td>F</td><td>S</td></tr><tr><td>1</td><td>2</td><td>3</td><td>4</td><td>5</td><td>6</td><td></td></tr><tr><td>7</td><td>8</td><td>9</td><td>10</td><td>11</td><td>12</td><td>13</td></tr><tr><td>14</td><td>15</td><td>16</td><td>17</td><td>18</td><td>19</td><td>20</td></tr><tr><td>21</td><td>22</td><td>23</td><td>24</td><td>25</td><td>26</td><td>27</td></tr><tr><td>28</td><td>29</td><td>30</td><td>31</td><td></td><td></td><td></td></tr></table>	S	M	T	W	T	F	S	1	2	3	4	5	6		7	8	9	10	11	12	13	14	15	16	17	18	19	20	21	22	23	24	25	26	27	28	29	30	31				<div>MARCH 2024</div> <table><tr><td>S</td><td>M</td><td>T</td><td>W</td><td>T</td><td>F</td><td>S</td></tr><tr><td></td><td></td><td></td><td></td><td></td><td>1</td><td>2</td></tr><tr><td>3</td><td>4</td><td>5</td><td>6</td><td>7</td><td>8</td><td>9</td></tr><tr><td>10</td><td>11</td><td>12</td><td>13</td><td>14</td><td>15</td><td>16</td></tr><tr><td>17</td><td>18</td><td>19</td><td>20</td><td>21</td><td>22</td><td>23</td></tr><tr><td>24</td><td>25</td><td>26</td><td>27</td><td>28</td><td>29</td><td>30</td></tr></table>	S	M	T	W	T	F	S						1	2	3	4	5	6	7	8	9	10	11	12	13	14	15	16	17	18	19	20	21	22	23	24	25	26	27	28	29	30	1	2 <div>Groundhog Day</div> <div> Rochester Area Builders Home Show February 2-4 Mayo Civic Center</div>	3
S	M	T	W	T	F	S																																																																																				
1	2	3	4	5	6																																																																																					
7	8	9	10	11	12	13																																																																																				
14	15	16	17	18	19	20																																																																																				
21	22	23	24	25	26	27																																																																																				
28	29	30	31																																																																																							
S	M	T	W	T	F	S																																																																																				
					1	2																																																																																				
3	4	5	6	7	8	9																																																																																				
10	11	12	13	14	15	16																																																																																				
17	18	19	20	21	22	23																																																																																				
24	25	26	27	28	29	30																																																																																				
4	5	6	7	8	9	10																																																																																				
11 <div>Super Bowl LVIII</div>	12	13	14 <div>Valentine's Day Ash Wednesday</div>	15	16	17																																																																																				
18	19 <div>Presidents' Day RPU OFFICES CLOSED</div>	20 <div>RPU Board Meeting 4pm • RPU Service Center</div>	21	22	23	24 <div>Full Moon</div>																																																																																				
25	26	27	28	29																																																																																						





3RD GRADE WINNER • Shaarav Nawale • Washington Elementary • Mrs. Seefeldt

# MARCH 2024



RPU Customer Care: 507-280-1500 • Website: [www.rpu.org](http://www.rpu.org)  
Electric Emergency: 507-280-9191 (24 hrs)  
Water Emergency: 507-280-1500 (8am-5pm) • 507-280-9191 (5pm-8am)

SUN	MON	TUE	WED	THU	FRI	SAT																																																																																				
<div>CONSERVE &amp; \$AVE™ WATER TIP</div> <div>Plan ahead for April showers! WaterSense® labeled weather-based irrigation controllers use local weather data to determine when and how much to water your lawn. Plus, you can apply for a rebate of 50% of your purchase price (up to \$75) from RPU.</div>		<div>FEBRUARY 2024</div> <table><tr><td>S</td><td>M</td><td>T</td><td>W</td><td>T</td><td>F</td><td>S</td></tr><tr><td></td><td></td><td></td><td></td><td>1</td><td>2</td><td>3</td></tr><tr><td>4</td><td>5</td><td>6</td><td>7</td><td>8</td><td>9</td><td>10</td></tr><tr><td>11</td><td>12</td><td>13</td><td>14</td><td>15</td><td>16</td><td>17</td></tr><tr><td>18</td><td>19</td><td>20</td><td>21</td><td>22</td><td>23</td><td>24</td></tr><tr><td>25</td><td>26</td><td>27</td><td>28</td><td>29</td><td></td><td></td></tr></table>	S	M	T	W	T	F	S					1	2	3	4	5	6	7	8	9	10	11	12	13	14	15	16	17	18	19	20	21	22	23	24	25	26	27	28	29			<div>APRIL 2024</div> <table><tr><td>S</td><td>M</td><td>T</td><td>W</td><td>T</td><td>F</td><td>S</td></tr><tr><td></td><td>1</td><td>2</td><td>3</td><td>4</td><td>5</td><td>6</td></tr><tr><td>7</td><td>8</td><td>9</td><td>10</td><td>11</td><td>12</td><td>13</td></tr><tr><td>14</td><td>15</td><td>16</td><td>17</td><td>18</td><td>19</td><td>20</td></tr><tr><td>21</td><td>22</td><td>23</td><td>24</td><td>25</td><td>26</td><td>27</td></tr><tr><td>28</td><td>29</td><td>30</td><td></td><td></td><td></td><td></td></tr></table>	S	M	T	W	T	F	S		1	2	3	4	5	6	7	8	9	10	11	12	13	14	15	16	17	18	19	20	21	22	23	24	25	26	27	28	29	30						1	2
S	M	T	W	T	F	S																																																																																				
				1	2	3																																																																																				
4	5	6	7	8	9	10																																																																																				
11	12	13	14	15	16	17																																																																																				
18	19	20	21	22	23	24																																																																																				
25	26	27	28	29																																																																																						
S	M	T	W	T	F	S																																																																																				
	1	2	3	4	5	6																																																																																				
7	8	9	10	11	12	13																																																																																				
14	15	16	17	18	19	20																																																																																				
21	22	23	24	25	26	27																																																																																				
28	29	30																																																																																								
3	4	5	6	7	8	9																																																																																				
10	11	12	13	14	15	16																																																																																				
Daylight Saving Time Begins																																																																																										
17	18	19	20	21	22	23																																																																																				
St. Patrick's Day		First Day of Spring																																																																																								
24	25	26	27	28	29	30																																																																																				
Palm Sunday	○ Full Moon																																																																																									
31		RPU Board Meeting 4pm • RPU Service Center			Good Friday																																																																																					
Easter																																																																																										





# TREES CLEAN THE AIR WE BREATHE!

4TH GRADE WINNER • Stella Huelsbeck • Jefferson Elementary • Mrs. Osowski

## APRIL 2024



RPU Customer Care: 507-280-1500 • Website: [www.rpu.org](http://www.rpu.org)  
Electric Emergency: 507-280-9191 (24 hrs)  
Water Emergency: 507-280-1500 (8am-5pm) • 507-280-9191 (5pm-8am)

SUN	MON	TUE	WED	THU	FRI	SAT																																										
<div>MARCH 2024</div> <table><tr><td>S</td><td>M</td><td>T</td><td>W</td><td>T</td><td>F</td><td>S</td></tr><tr><td></td><td></td><td></td><td></td><td></td><td>1</td><td>2</td></tr><tr><td>3</td><td>4</td><td>5</td><td>6</td><td>7</td><td>8</td><td>9</td></tr><tr><td>10</td><td>11</td><td>12</td><td>13</td><td>14</td><td>15</td><td>16</td></tr><tr><td>17</td><td>18</td><td>19</td><td>20</td><td>21</td><td>22</td><td>23</td></tr><tr><td>24/31</td><td>25</td><td>26</td><td>27</td><td>28</td><td>29</td><td>30</td></tr></table>	S	M	T	W	T	F	S						1	2	3	4	5	6	7	8	9	10	11	12	13	14	15	16	17	18	19	20	21	22	23	24/31	25	26	27	28	29	30	1  April Fools' Day	2	3	4	5	6
S	M	T	W	T	F	S																																										
					1	2																																										
3	4	5	6	7	8	9																																										
10	11	12	13	14	15	16																																										
17	18	19	20	21	22	23																																										
24/31	25	26	27	28	29	30																																										
7	8	9	10	11	12	13																																										
14	15  Tax Day	16	17	18	19	20																																										
21	22  Passover Begins Earth Day	23 ○ Full Moon	24	25	26 <div> RPU Arbor Day Celebration 11am-1pm Three Links - Silver Lake Park</div>	27																																										
28	29	30  RPU Board Meeting 4pm • RPU Service Center	<div>MAY 2024</div> <table><tr><td>S</td><td>M</td><td>T</td><td>W</td><td>T</td><td>F</td><td>S</td></tr><tr><td></td><td></td><td></td><td>1</td><td>2</td><td>3</td><td>4</td></tr><tr><td>5</td><td>6</td><td>7</td><td>8</td><td>9</td><td>10</td><td>11</td></tr><tr><td>12</td><td>13</td><td>14</td><td>15</td><td>16</td><td>17</td><td>18</td></tr><tr><td>19</td><td>20</td><td>21</td><td>22</td><td>23</td><td>24</td><td>25</td></tr><tr><td>26</td><td>27</td><td>28</td><td>29</td><td>30</td><td>31</td><td></td></tr></table>	S	M	T	W	T	F	S				1	2	3	4	5	6	7	8	9	10	11	12	13	14	15	16	17	18	19	20	21	22	23	24	25	26	27	28	29	30	31		<div>CONSERVE &amp; \$SAVE™</div> <div>ENERGY TIP</div> <p>Plant a tree in celebration of Arbor Day this month! If you plant a tree today on the west side of your home, in 5 years your energy bills should be 3% less. In 15 years, the savings will be nearly 12%. Through our Partners in Planting program, RPU can help you with the purchase and care of a new tree with \$10 nursery and \$20 arborist coupons. Visit <a href="http://www.rpu.org">www.rpu.org</a> for more information and to download the coupons.</p>		
S	M	T	W	T	F	S																																										
			1	2	3	4																																										
5	6	7	8	9	10	11																																										
12	13	14	15	16	17	18																																										
19	20	21	22	23	24	25																																										
26	27	28	29	30	31																																											





5TH GRADE WINNER • Eleanor Ribikawskis • Bishop Elementary • Mr. Paul

# MAY 2024



RPU Customer Care: 507-280-1500 • Website: [www.rpu.org](http://www.rpu.org)  
Electric Emergency: 507-280-9191 (24 hrs)  
Water Emergency: 507-280-1500 (8am-5pm) • 507-280-9191 (5pm-8am)

SUN	MON	TUE	WED	THU	FRI	SAT																																										
<div>CONSERVE &amp; \$AVE™ WATER TIP</div> <div>Purchase or build a rain barrel to collect stormwater for watering your lawn, garden, and houseplants. You can apply for a \$10 rebate from RPU.</div>		<div>APRIL 2024</div> <table><tr><td>S</td><td>M</td><td>T</td><td>W</td><td>T</td><td>F</td><td>S</td></tr><tr><td></td><td>1</td><td>2</td><td>3</td><td>4</td><td>5</td><td>6</td></tr><tr><td>7</td><td>8</td><td>9</td><td>10</td><td>11</td><td>12</td><td>13</td></tr><tr><td>14</td><td>15</td><td>16</td><td>17</td><td>18</td><td>19</td><td>20</td></tr><tr><td>21</td><td>22</td><td>23</td><td>24</td><td>25</td><td>26</td><td>27</td></tr><tr><td>28</td><td>29</td><td>30</td><td></td><td></td><td></td><td></td></tr></table>	S	M	T	W	T	F	S		1	2	3	4	5	6	7	8	9	10	11	12	13	14	15	16	17	18	19	20	21	22	23	24	25	26	27	28	29	30					1	2	3	4
S	M	T	W	T	F	S																																										
	1	2	3	4	5	6																																										
7	8	9	10	11	12	13																																										
14	15	16	17	18	19	20																																										
21	22	23	24	25	26	27																																										
28	29	30																																														
5 <div>Cinco de Mayo National Drinking Water Week May 5-11</div>	6	7	8	9	10	11																																										
12 <div>Mother's Day</div>	13	14	15	16	17	18 <div>Armed Forces Day</div>																																										
19	20	21 <div>RPU Board Meeting 4pm • RPU Service Center</div>	22	23 <div>Full Moon</div>	24	25																																										
26	27 <div>Memorial Day RPU OFFICES CLOSED</div>	28	29	30	31	<div>JUNE 2024</div> <table><tr><td>S</td><td>M</td><td>T</td><td>W</td><td>T</td><td>F</td><td>S</td></tr><tr><td></td><td></td><td></td><td></td><td></td><td></td><td>1</td></tr><tr><td>2</td><td>3</td><td>4</td><td>5</td><td>6</td><td>7</td><td>8</td></tr><tr><td>9</td><td>10</td><td>11</td><td>12</td><td>13</td><td>14</td><td>15</td></tr><tr><td>16</td><td>17</td><td>18</td><td>19</td><td>20</td><td>21</td><td>22</td></tr><tr><td>23<sup>30</sup></td><td>24</td><td>25</td><td>26</td><td>27</td><td>28</td><td>29</td></tr></table>	S	M	T	W	T	F	S							1	2	3	4	5	6	7	8	9	10	11	12	13	14	15	16	17	18	19	20	21	22	23 <sup>30</sup>	24	25	26	27	28	29
S	M	T	W	T	F	S																																										
						1																																										
2	3	4	5	6	7	8																																										
9	10	11	12	13	14	15																																										
16	17	18	19	20	21	22																																										
23 <sup>30</sup>	24	25	26	27	28	29																																										





# JUNE 2024



RPU Customer Care: 507-280-1500 • Website: [www.rpu.org](http://www.rpu.org)  
Electric Emergency: 507-280-9191 (24 hrs)  
Water Emergency: 507-280-1500 (8am-5pm) • 507-280-9191 (5pm-8am)

SUN	MON	TUE	WED	THU	FRI	SAT																																																																																				
<div>CONSERVE &amp; \$AVE™ ENERGY TIP</div> <div>Do you need a new cooling system this summer? RPU offers valuable rebates on new central air conditioners and heat pump systems. Visit <a href="http://www.rpu.org">www.rpu.org</a> to learn more!</div>		<div>MAY 2024</div> <table><tr><td>S</td><td>M</td><td>T</td><td>W</td><td>T</td><td>F</td><td>S</td></tr><tr><td></td><td></td><td>1</td><td>2</td><td>3</td><td>4</td><td></td></tr><tr><td>5</td><td>6</td><td>7</td><td>8</td><td>9</td><td>10</td><td>11</td></tr><tr><td>12</td><td>13</td><td>14</td><td>15</td><td>16</td><td>17</td><td>18</td></tr><tr><td>19</td><td>20</td><td>21</td><td>22</td><td>23</td><td>24</td><td>25</td></tr><tr><td>26</td><td>27</td><td>28</td><td>29</td><td>30</td><td>31</td><td></td></tr></table>	S	M	T	W	T	F	S			1	2	3	4		5	6	7	8	9	10	11	12	13	14	15	16	17	18	19	20	21	22	23	24	25	26	27	28	29	30	31		<div>JULY 2024</div> <table><tr><td>S</td><td>M</td><td>T</td><td>W</td><td>T</td><td>F</td><td>S</td></tr><tr><td></td><td>1</td><td>2</td><td>3</td><td>4</td><td>5</td><td>6</td></tr><tr><td>7</td><td>8</td><td>9</td><td>10</td><td>11</td><td>12</td><td>13</td></tr><tr><td>14</td><td>15</td><td>16</td><td>17</td><td>18</td><td>19</td><td>20</td></tr><tr><td>21</td><td>22</td><td>23</td><td>24</td><td>25</td><td>26</td><td>27</td></tr><tr><td>28</td><td>29</td><td>30</td><td>31</td><td></td><td></td><td></td></tr></table>	S	M	T	W	T	F	S		1	2	3	4	5	6	7	8	9	10	11	12	13	14	15	16	17	18	19	20	21	22	23	24	25	26	27	28	29	30	31						1
S	M	T	W	T	F	S																																																																																				
		1	2	3	4																																																																																					
5	6	7	8	9	10	11																																																																																				
12	13	14	15	16	17	18																																																																																				
19	20	21	22	23	24	25																																																																																				
26	27	28	29	30	31																																																																																					
S	M	T	W	T	F	S																																																																																				
	1	2	3	4	5	6																																																																																				
7	8	9	10	11	12	13																																																																																				
14	15	16	17	18	19	20																																																																																				
21	22	23	24	25	26	27																																																																																				
28	29	30	31																																																																																							
2	3	4	5	6	7	8																																																																																				
9	10	11	12	13	14	15																																																																																				
16	17	18	19	20	21 <div>Flag Day</div>	22																																																																																				
Father's Day	24	25	26 <div>Juneteenth RPU OFFICES CLOSED</div>	27 <div>First Day of Summer</div>	28 <div>Full Moon</div>	29																																																																																				
23	24	25	26	27	28	29																																																																																				
30		RPU Board Meeting 4pm • RPU Service Center																																																																																								





Norah Downs • 2nd Grade • Pinewood Elementary • Ms. Haley

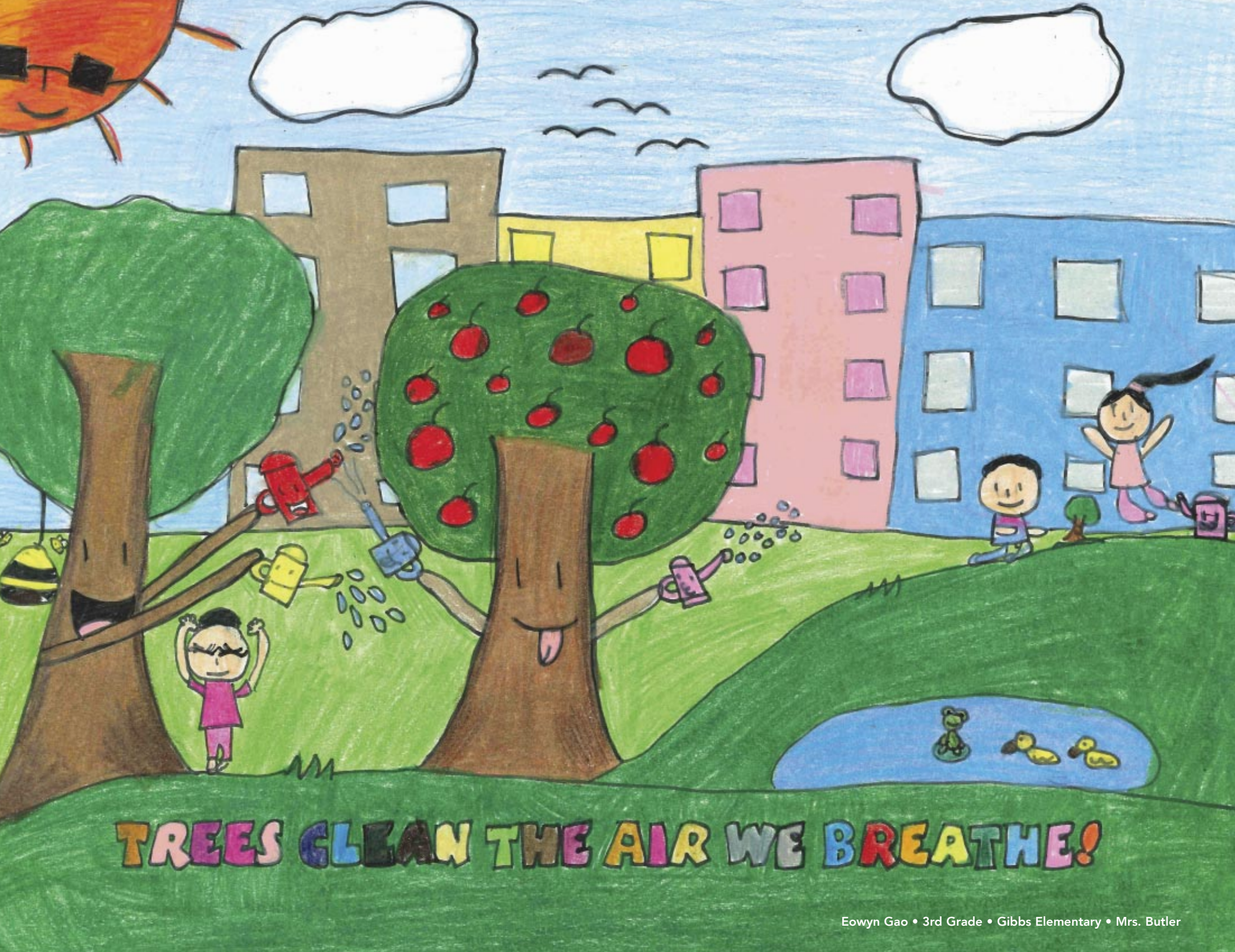
# JULY 2024



RPU Customer Care: 507-280-1500 • Website: [www.rpu.org](http://www.rpu.org)  
Electric Emergency: 507-280-9191 (24 hrs)  
Water Emergency: 507-280-1500 (8am-5pm) • 507-280-9191 (5pm-8am)

SUN	MON	TUE	WED	THU	FRI	SAT																																										
<div>JUNE 2024</div> <table><tr><td>S</td><td>M</td><td>T</td><td>W</td><td>T</td><td>F</td><td>S</td></tr><tr><td></td><td></td><td></td><td></td><td></td><td></td><td>1</td></tr><tr><td>2</td><td>3</td><td>4</td><td>5</td><td>6</td><td>7</td><td>8</td></tr><tr><td>9</td><td>10</td><td>11</td><td>12</td><td>13</td><td>14</td><td>15</td></tr><tr><td>16</td><td>17</td><td>18</td><td>19</td><td>20</td><td>21</td><td>22</td></tr><tr><td>23/30</td><td>24</td><td>25</td><td>26</td><td>27</td><td>28</td><td>29</td></tr></table>	S	M	T	W	T	F	S							1	2	3	4	5	6	7	8	9	10	11	12	13	14	15	16	17	18	19	20	21	22	23/30	24	25	26	27	28	29	1	2	3	4	5	6
S	M	T	W	T	F	S																																										
						1																																										
2	3	4	5	6	7	8																																										
9	10	11	12	13	14	15																																										
16	17	18	19	20	21	22																																										
23/30	24	25	26	27	28	29																																										
7	8	9	10	11	12	13																																										
14	15	16	17	18	19	20																																										
21	22	23	24	25	26	27																																										
28	29	30	31	<div>AUGUST 2024</div> <table><tr><td>S</td><td>M</td><td>T</td><td>W</td><td>T</td><td>F</td><td>S</td></tr><tr><td></td><td></td><td></td><td></td><td>1</td><td>2</td><td>3</td></tr><tr><td>4</td><td>5</td><td>6</td><td>7</td><td>8</td><td>9</td><td>10</td></tr><tr><td>11</td><td>12</td><td>13</td><td>14</td><td>15</td><td>16</td><td>17</td></tr><tr><td>18</td><td>19</td><td>20</td><td>21</td><td>22</td><td>23</td><td>24</td></tr><tr><td>25</td><td>26</td><td>27</td><td>28</td><td>29</td><td>30</td><td>31</td></tr></table>	S	M	T	W	T	F	S					1	2	3	4	5	6	7	8	9	10	11	12	13	14	15	16	17	18	19	20	21	22	23	24	25	26	27	28	29	30	31	<div>CONSERVE &amp; \$AVE</div> <div>ENERGY TIP + WATER TIP</div> <div>Get a double dose of savings! Energy Star® certified clothes washers use 25% less energy and 33% less water than regular washers, plus you can apply for a rebates up to \$65 from RPU.</div>	
S	M	T	W	T	F	S																																										
				1	2	3																																										
4	5	6	7	8	9	10																																										
11	12	13	14	15	16	17																																										
18	19	20	21	22	23	24																																										
25	26	27	28	29	30	31																																										





# AUGUST 2024



RPU Customer Care: 507-280-1500 • Website: [www.rpu.org](http://www.rpu.org)  
Electric Emergency: 507-280-9191 (24 hrs)  
Water Emergency: 507-280-1500 (8am-5pm) • 507-280-9191 (5pm-8am)

SUN	MON	TUE	WED	THU	FRI	SAT																																																																																				
<div>CONSERVE &amp; \$AVE™ ENERGY TIP</div> <div>Did you know heat pumps are not only for home heating and cooling? There are also heat pump clothes dryers and heat pump water heaters. RPU offers valuable rebates on all three! Visit <a href="http://www.rpu.org">www.rpu.org</a> to learn more.</div>		<div>JULY 2024</div> <table><tr><td>S</td><td>M</td><td>T</td><td>W</td><td>T</td><td>F</td><td>S</td></tr><tr><td></td><td>1</td><td>2</td><td>3</td><td>4</td><td>5</td><td>6</td></tr><tr><td>7</td><td>8</td><td>9</td><td>10</td><td>11</td><td>12</td><td>13</td></tr><tr><td>14</td><td>15</td><td>16</td><td>17</td><td>18</td><td>19</td><td>20</td></tr><tr><td>21</td><td>22</td><td>23</td><td>24</td><td>25</td><td>26</td><td>27</td></tr><tr><td>28</td><td>29</td><td>30</td><td>31</td><td></td><td></td><td></td></tr></table>	S	M	T	W	T	F	S		1	2	3	4	5	6	7	8	9	10	11	12	13	14	15	16	17	18	19	20	21	22	23	24	25	26	27	28	29	30	31				<div>SEPTEMBER 2024</div> <table><tr><td>S</td><td>M</td><td>T</td><td>W</td><td>T</td><td>F</td><td>S</td></tr><tr><td>1</td><td>2</td><td>3</td><td>4</td><td>5</td><td>6</td><td>7</td></tr><tr><td>8</td><td>9</td><td>10</td><td>11</td><td>12</td><td>13</td><td>14</td></tr><tr><td>15</td><td>16</td><td>17</td><td>18</td><td>19</td><td>20</td><td>21</td></tr><tr><td>22</td><td>23</td><td>24</td><td>25</td><td>26</td><td>27</td><td>28</td></tr><tr><td>29</td><td>30</td><td></td><td></td><td></td><td></td><td></td></tr></table>	S	M	T	W	T	F	S	1	2	3	4	5	6	7	8	9	10	11	12	13	14	15	16	17	18	19	20	21	22	23	24	25	26	27	28	29	30						1	2	3
S	M	T	W	T	F	S																																																																																				
	1	2	3	4	5	6																																																																																				
7	8	9	10	11	12	13																																																																																				
14	15	16	17	18	19	20																																																																																				
21	22	23	24	25	26	27																																																																																				
28	29	30	31																																																																																							
S	M	T	W	T	F	S																																																																																				
1	2	3	4	5	6	7																																																																																				
8	9	10	11	12	13	14																																																																																				
15	16	17	18	19	20	21																																																																																				
22	23	24	25	26	27	28																																																																																				
29	30																																																																																									
4	5	6 <div>RPU Board Meeting Budget Study Session 4pm • RPU Service Center</div>	7	8	9	10																																																																																				
11	12	13	14	15	16	17																																																																																				
18	19 <div>○ Full Moon</div>	20	21	22	23	24																																																																																				
25	26	27 <div>RPU Board Meeting 4pm • RPU Service Center</div>	28	29	30	31																																																																																				





# SEPTEMBER 2024



RPU Customer Care: 507-280-1500 • Website: [www.rpu.org](http://www.rpu.org)  
Electric Emergency: 507-280-9191 (24 hrs)  
Water Emergency: 507-280-1500 (8am-5pm) • 507-280-9191 (5pm-8am)

SUN	MON	TUE	WED	THU	FRI	SAT																																																																																			
1	2  <b>Labor Day</b> RPU OFFICES CLOSED	3	4	5	6	7																																																																																			
8  Grandparents Day	9	10	11  Patriot Day	12	13	14																																																																																			
15	16	17  Full Moon	18	19	20	21																																																																																			
22  First Day of Autumn	23	24  <b>RPU Board Meeting</b> 4pm • RPU Service Center	25	26	27	28																																																																																			
29	30		<div><b>AUGUST 2024</b></div> <table><tr><td>S</td><td>M</td><td>T</td><td>W</td><td>T</td><td>F</td><td>S</td></tr><tr><td></td><td></td><td></td><td></td><td>1</td><td>2</td><td>3</td></tr><tr><td>4</td><td>5</td><td>6</td><td>7</td><td>8</td><td>9</td><td>10</td></tr><tr><td>11</td><td>12</td><td>13</td><td>14</td><td>15</td><td>16</td><td>17</td></tr><tr><td>18</td><td>19</td><td>20</td><td>21</td><td>22</td><td>23</td><td>24</td></tr><tr><td>25</td><td>26</td><td>27</td><td>28</td><td>29</td><td>30</td><td>31</td></tr></table>	S	M	T	W	T	F	S					1	2	3	4	5	6	7	8	9	10	11	12	13	14	15	16	17	18	19	20	21	22	23	24	25	26	27	28	29	30	31	<div><b>OCTOBER 2024</b></div> <table><tr><td>S</td><td>M</td><td>T</td><td>W</td><td>T</td><td>F</td><td>S</td></tr><tr><td></td><td></td><td></td><td>1</td><td>2</td><td>3</td><td>4</td></tr><tr><td>5</td><td>6</td><td>7</td><td>8</td><td>9</td><td>10</td><td>11</td></tr><tr><td>12</td><td>13</td><td>14</td><td>15</td><td>16</td><td>17</td><td>18</td></tr><tr><td>19</td><td>20</td><td>21</td><td>22</td><td>23</td><td>24</td><td>25</td></tr><tr><td>26</td><td>27</td><td>28</td><td>29</td><td>30</td><td>31</td><td></td></tr></table>	S	M	T	W	T	F	S				1	2	3	4	5	6	7	8	9	10	11	12	13	14	15	16	17	18	19	20	21	22	23	24	25	26	27	28	29	30	31		<div><b>CONSERVE &amp; \$AVE™</b></div> <div><b>ENERGY TIP</b></div> <div>Do you use electric heat or a heat pump? Install an Energy Star® smart thermostat and apply for a rebate up to \$100 from RPU!</div>
S	M	T	W	T	F	S																																																																																			
				1	2	3																																																																																			
4	5	6	7	8	9	10																																																																																			
11	12	13	14	15	16	17																																																																																			
18	19	20	21	22	23	24																																																																																			
25	26	27	28	29	30	31																																																																																			
S	M	T	W	T	F	S																																																																																			
			1	2	3	4																																																																																			
5	6	7	8	9	10	11																																																																																			
12	13	14	15	16	17	18																																																																																			
19	20	21	22	23	24	25																																																																																			
26	27	28	29	30	31																																																																																				





# TREES CLEAN THE AIR WE BREATHE!

Ashlynn Bailey • 5th Grade • Hoover Elementary • Mr. Smith

## OCTOBER 2024



RPU Customer Care: 507-280-1500 • Website: [www.rpu.org](http://www.rpu.org)  
Electric Emergency: 507-280-9191 (24 hrs)  
Water Emergency: 507-280-1500 (8am-5pm) • 507-280-9191 (5pm-8am)

SUN	MON	TUE	WED	THU	FRI	SAT																																																																																				
<div>SEPTEMBER 2024</div> <table><tr><td>S</td><td>M</td><td>T</td><td>W</td><td>T</td><td>F</td><td>S</td></tr><tr><td>1</td><td>2</td><td>3</td><td>4</td><td>5</td><td>6</td><td>7</td></tr><tr><td>8</td><td>9</td><td>10</td><td>11</td><td>12</td><td>13</td><td>14</td></tr><tr><td>15</td><td>16</td><td>17</td><td>18</td><td>19</td><td>20</td><td>21</td></tr><tr><td>22</td><td>23</td><td>24</td><td>25</td><td>26</td><td>27</td><td>28</td></tr><tr><td>29</td><td>30</td><td></td><td></td><td></td><td></td><td></td></tr></table>	S	M	T	W	T	F	S	1	2	3	4	5	6	7	8	9	10	11	12	13	14	15	16	17	18	19	20	21	22	23	24	25	26	27	28	29	30						<div>NOVEMBER 2024</div> <table><tr><td>S</td><td>M</td><td>T</td><td>W</td><td>T</td><td>F</td><td>S</td></tr><tr><td></td><td></td><td></td><td></td><td></td><td></td><td>1 2</td></tr><tr><td>3</td><td>4</td><td>5</td><td>6</td><td>7</td><td>8</td><td>9</td></tr><tr><td>10</td><td>11</td><td>12</td><td>13</td><td>14</td><td>15</td><td>16</td></tr><tr><td>17</td><td>18</td><td>19</td><td>20</td><td>21</td><td>22</td><td>23</td></tr><tr><td>24</td><td>25</td><td>26</td><td>27</td><td>28</td><td>29</td><td>30</td></tr></table>	S	M	T	W	T	F	S							1 2	3	4	5	6	7	8	9	10	11	12	13	14	15	16	17	18	19	20	21	22	23	24	25	26	27	28	29	30	1	2	3	4	5
S	M	T	W	T	F	S																																																																																				
1	2	3	4	5	6	7																																																																																				
8	9	10	11	12	13	14																																																																																				
15	16	17	18	19	20	21																																																																																				
22	23	24	25	26	27	28																																																																																				
29	30																																																																																									
S	M	T	W	T	F	S																																																																																				
						1 2																																																																																				
3	4	5	6	7	8	9																																																																																				
10	11	12	13	14	15	16																																																																																				
17	18	19	20	21	22	23																																																																																				
24	25	26	27	28	29	30																																																																																				
6	7	8	9	10	11	12																																																																																				
<div>AMERICAN PUBLIC POWER ASSOCIATION</div> <div>Public Power Week</div> <div>October 6-12</div>			Rosh Hashanah Begins		Yom Kippur Begins																																																																																					
13	14	15	16	17 <div>Full Moon</div>	18	19																																																																																				
	Columbus Day																																																																																									
20	21	22	23	24	25	26																																																																																				
27	28	29	30	31	<div>CONSERVE &amp; \$AVE™</div> <div>ENERGY TIP</div> <div>Hunt Vampire Power with a Kill A Watt® meter! Learn how much energy and money can be saved by replacing, unplugging, or using a smart power strip. RPU has Kill A Watt® meters that you can use in your home for free! Call 507-280-1500 to reserve one today.</div>																																																																																					
		RPU Board Meeting 4pm • RPU Service Center		Halloween																																																																																						





TREES CLEAN THE AIR WE BREATHE!

Angely Morales • 3rd Grade • Franklin Elementary • Mrs. Guenther

NOVEMBER 2024




RPU Customer Care: 507-280-1500 • Website: www.rpu.org  
Electric Emergency: 507-280-9191 (24 hrs)  
Water Emergency: 507-280-1500 (8am-5pm) • 507-280-9191 (5pm-8am)

SUN	MON	TUE	WED	THU	FRI	SAT
<div>CONSERVE &amp; \$SAVE</div> <div>ENERGY TIP + WATER TIP</div> <div>Need a new dishwasher for holiday clean-up? Energy Star® certified dishwashers are 12% more energy efficient and 30% more water efficient than regular models, plus you can apply for an electric rebate up to \$40 from RPU.</div>		<div>OCTOBER 2024</div> <div>S M T W T F S</div> <div>1 2 3 4 5</div> <div>6 7 8 9 10 11 12</div> <div>13 14 15 16 17 18 19</div> <div>20 21 22 23 24 25 26</div> <div>27 28 29 30 31</div>	<div>DECEMBER 2024</div> <div>S M T W T F S</div> <div>1 2 3 4 5 6 7</div> <div>8 9 10 11 12 13 14</div> <div>15 16 17 18 19 20 21</div> <div>22 23 24 25 26 27 28</div> <div>29 30 31</div>		1	2
3	4	5	6	7	8	9
Daylight Saving Time Ends		Election Day				
10	11	12	13	14	15 <div>Full Moon</div>	16
	Veterans' Day RPU OFFICES CLOSED					
17	18	19	20	21	22	23
24	25	26	27	28	29	30
		RPU Board Meeting 4pm • RPU Service Center		Thanksgiving Day RPU OFFICES CLOSED	Day After Thanksgiving RPU OFFICES CLOSED	





DECEMBER 2024



ROCHESTER  
PUBLIC UTILITIES  
WE PLEDGE, WE DELIVER™

RPU Customer Care: 507-280-1500 • Website: [www.rpu.org](http://www.rpu.org)  
Electric Emergency: 507-280-9191 (24 hrs)  
Water Emergency: 507-280-1500 (8am-5pm) • 507-280-9191 (5pm-8am)

SUN	MON	TUE	WED	THU	FRI	SAT																																																																																					
1	2	3	4	5	6	7																																																																																					
						Pearl Harbor Remembrance Day																																																																																					
8	9	10	11	12	13	14																																																																																					
15	16	17	18	19	20	21																																																																																					
○ Full Moon		RPU Board Meeting 4pm • RPU Service Center				First Day of Winter																																																																																					
22	23	24	25	26	27	28																																																																																					
		Christmas Eve RPU OFFICES CLOSED AT NOON	Hanukkah Begins Christmas Day RPU OFFICES CLOSED	Kwanzaa Begins																																																																																							
29	30	31	<div>NOVEMBER 2024</div> <table><tr><td>S</td><td>M</td><td>T</td><td>W</td><td>T</td><td>F</td><td>S</td></tr><tr><td></td><td></td><td></td><td></td><td></td><td>1</td><td>2</td></tr><tr><td>3</td><td>4</td><td>5</td><td>6</td><td>7</td><td>8</td><td>9</td></tr><tr><td>10</td><td>11</td><td>12</td><td>13</td><td>14</td><td>15</td><td>16</td></tr><tr><td>17</td><td>18</td><td>19</td><td>20</td><td>21</td><td>22</td><td>23</td></tr><tr><td>24</td><td>25</td><td>26</td><td>27</td><td>28</td><td>29</td><td>30</td></tr></table>		S	M	T	W	T	F	S						1	2	3	4	5	6	7	8	9	10	11	12	13	14	15	16	17	18	19	20	21	22	23	24	25	26	27	28	29	30	<div>JANUARY 2025</div> <table><tr><td>S</td><td>M</td><td>T</td><td>W</td><td>T</td><td>F</td><td>S</td></tr><tr><td></td><td></td><td></td><td>1</td><td>2</td><td>3</td><td>4</td></tr><tr><td>5</td><td>6</td><td>7</td><td>8</td><td>9</td><td>10</td><td>11</td></tr><tr><td>12</td><td>13</td><td>14</td><td>15</td><td>16</td><td>17</td><td>18</td></tr><tr><td>19</td><td>20</td><td>21</td><td>22</td><td>23</td><td>24</td><td>25</td></tr><tr><td>26</td><td>27</td><td>28</td><td>29</td><td>30</td><td>31</td><td></td></tr></table>		S	M	T	W	T	F	S				1	2	3	4	5	6	7	8	9	10	11	12	13	14	15	16	17	18	19	20	21	22	23	24	25	26	27	28	29	30	31		<div>CONSERVE &amp; \$AVE™ ENERGY TIP</div> <div>Use LED holiday lights and decorations - they are 75% more efficient and last up to 25 times longer. You can apply for a rebate from RPU on your purchase of new LED lights and decorations - up to \$12 per string!</div>
S	M	T	W	T	F	S																																																																																					
					1	2																																																																																					
3	4	5	6	7	8	9																																																																																					
10	11	12	13	14	15	16																																																																																					
17	18	19	20	21	22	23																																																																																					
24	25	26	27	28	29	30																																																																																					
S	M	T	W	T	F	S																																																																																					
			1	2	3	4																																																																																					
5	6	7	8	9	10	11																																																																																					
12	13	14	15	16	17	18																																																																																					
19	20	21	22	23	24	25																																																																																					
26	27	28	29	30	31																																																																																						
		New Year's Eve RPU OFFICES CLOSED AT NOON																																																																																									





TREES CLEAN THE AIR WE BREATHE!

Angela Li • 5th Grade • Folwell Elementary • Ms. Coffing

JANUARY 2025



RPU Customer Care: 507-280-1500 • Website: www.rpu.org  
Electric Emergency: 507-280-9191 (24 hrs)  
Water Emergency: 507-280-1500 (8am-5pm) • 507-280-9191 (5pm-8am)

SUN	MON	TUE	WED	THU	FRI	SAT
<div>CONSERVE &amp; \$AVE™ ENERGY TIP Make a New Year's Resolution to save! Attend one of our FREE Neighborhood Energy Challenge workshops and qualify for a home energy audit for only \$75! Visit www.rpu.org for workshop dates and more information.</div>		<div>DECEMBER 2024 S M T W T F S 1 2 3 4 5 6 7 8 9 10 11 12 13 14 15 16 17 18 19 20 21 22 23 24 25 26 27 28 29 30 31</div>	1  <div>New Year's Day RPU OFFICES CLOSED</div>	2	3	4
	5	6	8	9	10	11
12	13 <div>Full Moon</div>	14	15	16	17	18
19	20 <div>Martin Luther King Jr. Day RPU OFFICES CLOSED</div>	21	22	23	24	25
26	27	28 <div>RPU Board Meeting 4pm • RPU Service Center</div>	29	30	31	<div>FEBRUARY 2025 S M T W T F S 1 2 3 4 5 6 7 8 9 10 11 12 13 14 15 16 17 18 19 20 21 22 23 24 25 26 27 28</div>