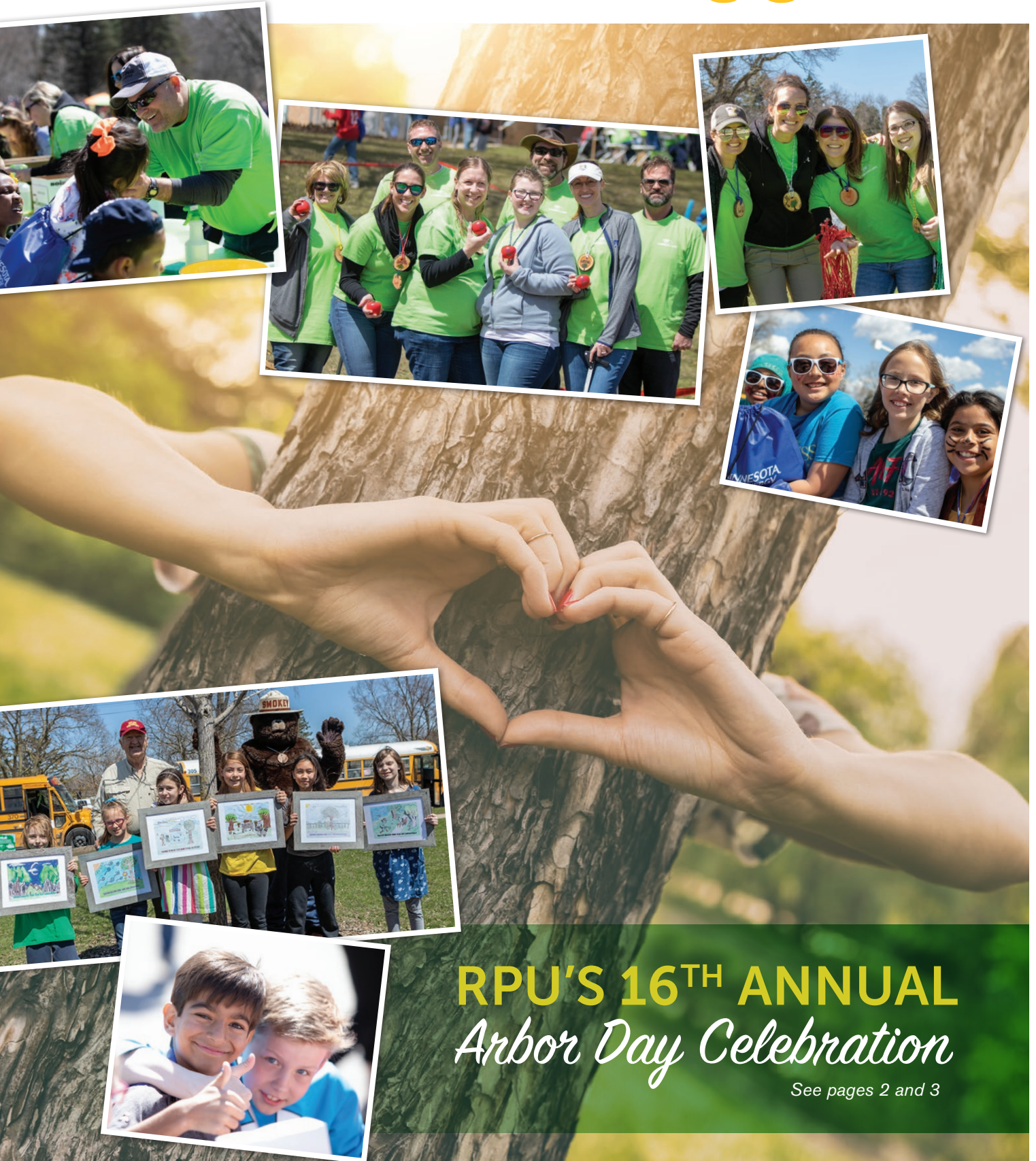


RPU Plugged In



RPU'S 16TH ANNUAL
Arbor Day Celebration

See pages 2 and 3



RPU'S 16TH ANNUAL *Arbor Day Celebration*

Most years the concern is if rain will spoil the plans for our Arbor Day Celebration, but this year however, the concern was slightly different. A week before the date for this year's Arbor Day Celebration, Rochester received significant snowfall! As planning moved for the event, many others were keeping their fingers crossed for the snow to melt and the park to be dry enough to invite over 3,000 of our closest elementary school and community friends to RPU's 16th Annual Arbor Day Celebration.

All of the positive thoughts worked and we were able to hold the event outdoors at Three Links – Silver Lake Park. The festivities included live music, lunch, free trees, various vendors, and many family activities. We also recognized the 2018 Arbor Day Poster Contest winners.

Co-sponsors include: Hy-Vee, Jim Whiting Nursery & Garden Center, Minnesota Energy Resources, Sargent's Gardens, and Seneca Foods.

Participants include: Boys & Girls Club of Rochester, Minnesota Children's Museum Rochester, Minnesota Department of Natural Resources, Olmsted County Environmental Resources, Olmsted Soil & Water Conservation District, Quarry Hill Nature Center, Rochester Art Center, Rochester Public Library, Rochester Public Works, Saint Mary's University-Cascade Meadow, and Zumbro Valley Audubon.

Thanks to our partners, Maier Tree & Lawn and Rochester Parks & Recreation, for all of their help again with the Arbor Day Celebration! We are already planning for next year's event and hope to see everyone there in 2019!



As part of the Arbor Day Celebration, RPU and Rochester Parks & Recreation team up to plant boulevard trees across the city. This year, the locations selected were along 9th Avenue SE, 3rd Street SE, and East River Road NE.



2018 Poster Contest Winners



OVERALL WINNER

Sophia Kozlowski • Mrs. Robinson •
Bamber Valley



FIRST GRADE

Urizen Fuhrer • Ms. Harmon • Lincoln



SECOND GRADE

Lyric Urban • Mrs. Mertesdorf •
Churchill



THIRD GRADE

Lila Sas • Mrs. Sherman • Jefferson



FOURTH GRADE

Jaidyn Ritchie • Ms. Schmidt
and Mrs. Shaw • Riverside



FIFTH GRADE

Sophia Cornish • Mr. Paul •
Harriet Bishop

Utility Payment Arrangements Available for Military Service Personnel

When a household member has been ordered to active duty, for deployment, or for a change of duty station, some customers may find it hard to pay their utility bills. Minnesota Law protects military personnel from shut-off if they cannot pay their bill in full. To qualify for this protection, you must enter into and keep reasonably current with one of the payment plans described below.

- ▶ If your household income is below the state median household income, pay 10 percent of your household's gross monthly income toward your RPU bill.
- ▶ If your household income is above the state median household income, make and keep a payment plan.
- ▶ If you receive energy assistance, pay 10 percent of your household's gross monthly income toward your RPU bill. The full statute description for Minnesota Statute 325E.028 can be found on the state of Minnesota website <https://www.revisor.mn.gov/pubs/>.

If you would like to sign up for payment arrangements or have questions regarding the "Military Service Personnel Disconnection Law," please contact RPU customer service at **507.280.1500**.

Wind Dancers Return to Select RPU Water Towers!



Much like how migratory birds make their way back to Minnesota after the cold winter, the wind dancers have shown back up on top of a number of RPU water towers this spring.

Turkey vultures have long been a nuisance to RPU and have made a mess on the outside of RPU water towers. Knowing that motion helps to keep turkey vultures away, an RPU Water Operator suggested installing a wind dancer on top of the Apache Water Tower back in 2015. Since then, the flailing arms and constant movement of the wind dancers have been a welcome sight for RPU.

It may be a funny sight to see on top of a water tower, but the value of having them up on four towers now, certainly is nothing to laugh at. Cleaning a water tower can cost thousands of dollars, whereas a wind dancer costs a small fraction of that.

The next time you see a wind dancer on top of an RPU water tower, be happy knowing that they're saving you and all RPU water customers money!

WATER CONSERVATION

Monthly Tip on Saving From the Tap!



Designate one glass for your drinking water each day, or refill a water bottle. This will cut down on the number of glasses to wash.

CONSERVE & \$AVE

rpu
we pledge, we deliver

It's time to schedule some **SPRING CLEANING**

Complete a Central Air Conditioner
Clean & Tune and apply for a
\$25 REBATE!

Regular preventative
maintenance is the
best way to ensure
trouble-free,
energy-efficient
operation.

Visit **www.rpu.org**
to download a
rebate application
with complete
terms and conditions;
some exclusions apply.

CONSERVE & \$AVE®

Time for a new cooling system?

**RPU offers great rebates on high
efficiency air conditioning equipment!**

Visit www.rpu.org for a complete list
of eligible equipment and to download a rebate
application with complete terms and conditions.




CONSERVE & \$AVE®

CALL BEFORE YOU DIG

As you are plotting out your tree plantings, landscaping, or even a new deck or play area, remember to always *Call Before You Dig* this summer. Gopher State One Call is a free utility locating service. Gopher State One Call is an important service to help keep customers and utility workers safe. It's not only quick and easy; it is also your responsibility as a homeowner.

Color Code Chart

The American Public Works Association encourages public agencies, utilities, contractors, associations, manufacturers, and all others involved in excavation to adopt the ULCC Uniform Color Code using the ANSI standard Z53.1 Safety Colors shown below. These colors are used to mark the various underground utilities that may be found during a dig. Flags or paint are examples of materials that are used to mark areas using the colors below.

	Proposed Excavation		Communication-CATV-Fiber
	Temporary Survey Markings		Water
	Electric		Reclaimed Water-Irrigation
	Gas-Oil-Steam-Propane		Sewer



www.gopherstateonecall.org
1.800.252.1166



Mark Kotschevar

Planning for Rochester's Future Begins Now

The quote often attributed to Benjamin Franklin, "Failing to plan is planning to fail," is certainly relevant to our business. When you flip the light switch or turn on the faucet, electricity and water flow instantaneously, but the facilities necessary to make that happen take many years to plan and construct.

Our new Westside Energy Station went commercial this March after three years of planning, permitting, design and construction. We are in the testing phase with our new customer care system, which resulted from a multiyear planning effort to bring additional efficiency and functionality for customer interactions. Planning our space needs for the next 20 years resulted in the Service Center expansion project, which is in full swing, and due to be completed by year's end. As we finish these large projects that were the outcome of our previous planning efforts, we are simultaneously planning for the next set of projects.

Over the next 12 months, we will begin studying alternatives, including a 100% renewable option, to serve the power supply needs of the City when our wholesale power supply contract with Southern Minnesota Municipal Power Agency expires in 2030. You may wonder why we need to start planning now for 2030. That's because it can take 10 years to obtain the necessary approvals, permitting, financing, design and construction, depending on the alternative chosen. This will be an important decision for the community, and we also want to leave ample time for stakeholder engagement as we evaluate the various alternatives. Therefore, it is not too early to start planning the reliable and affordable power supply for Rochester's future.

In addition to power supply, we are planning for the systematic expansion and replacement of electric and water infrastructure. These long-range plans allow us to be financially ready to pay for these additions, and avoid large unexpected rate increases. These are exciting times in Rochester, and it has never been more important than now to think long term and plan ahead.

ENERGY CONSERVATION

Monthly Tip for Plugging into Savings!



Plant a tree!

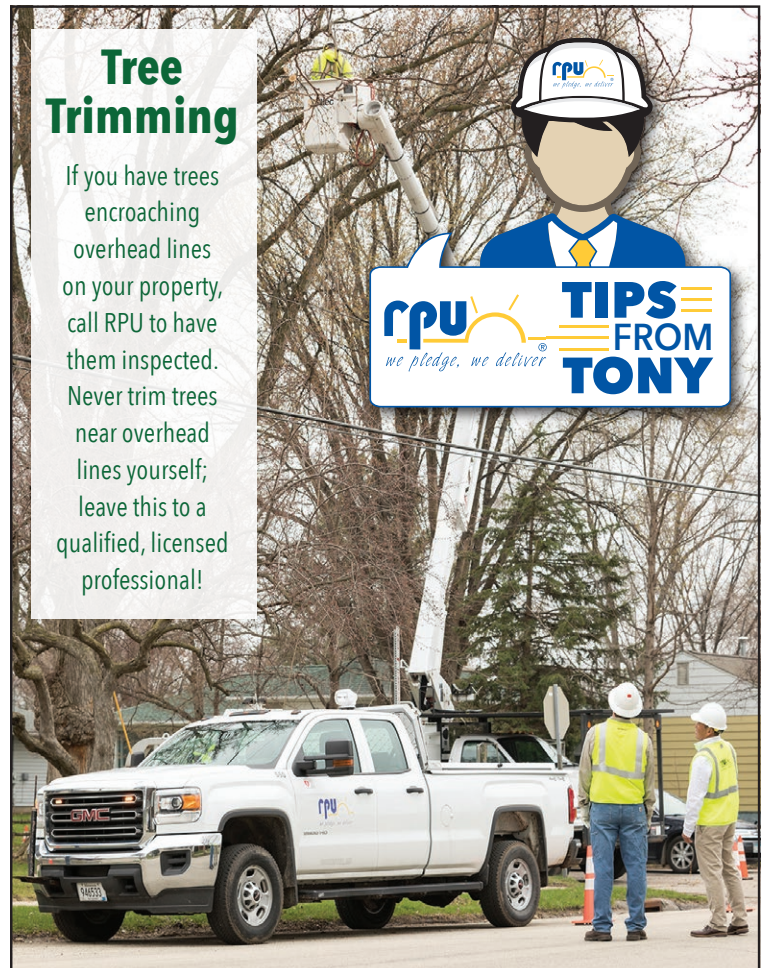
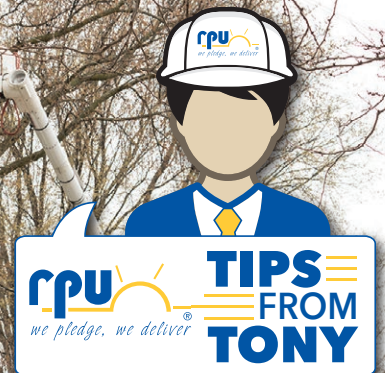
If you plant a tree today on the west side of your home, in five years your energy bills should be 3% less. In 15 years the savings will be nearly 12%.



CONSERVE & \$AVE

Tree Trimming

If you have trees encroaching overhead lines on your property, call RPU to have them inspected. Never trim trees near overhead lines yourself; leave this to a qualified, licensed professional!



RPU Commercial Customer Corner

Is It Worth It?

That is the universal question we ask ourselves when making a decision. The decision to implement an energy-savings project isn't any different. Thankfully, there are several sound methods to determine the value of the project.

The most common and easiest to understand is *simple payback*. It is calculated as the quotient of the total project cost divided by the annual savings. This gives an estimate of how long it will take before the savings have paid for the project. Although easy to compute and understand, simple payback may not be the best metric since it does not consider the project savings over its entire operating life, the cost of possible financing, or the increased asset value due to lower operating costs. The projects with the shortest simple payback may not provide the highest financial gain.

Another tool that can be used is *net present value*. It takes the present cash outflow (project cost), and future cash inflows (project savings), and computes the present value of the project over its entire life. Net present value can be calculated using functions available in spreadsheet programs. The projects with the highest net present values provide the biggest bang for the buck.

These are a couple of ways to determine how you can financially benefit from energy-efficient upgrades. Other intangible ways energy-efficient projects provide benefits include: comfort, aesthetics, and an improved public image, among others. These benefits are valued by organizations differently, but shouldn't be ignored.



Jan Blevins
Commercial Account
Representative
jblevins@rpu.org
507.280.1578



Dru Larson
Energy and
Environmental Advisor
dlarson@rpu.org
507.280.1607



Josh Mason
Energy and
Environmental Advisor
jmason@rpu.org
507.280.1588

CONSERVE & \$AVE®

RPU offers Conserve & Save® rebates to help cover the cost of energy-efficient upgrades that will shorten the simple payback or bump up the net present value. Contact your RPU representative for more information.



RPU Welcomes Josh Mason!

RPU is pleased to announce the addition of Josh Mason to the marketing team as an Energy and Environmental Advisor. Josh will be working with commercial customers to assist with their energy-service needs. He has over nine years of experience in the energy industry, including five years with Detroit Lakes Public Utilities as an Energy Services Specialist. Josh earned a bachelor's degree in Environmental Studies from the University of Minnesota, Duluth. He is a Rochester native who graduated from Century High School and is excited to be back working in his hometown. Please feel free to contact Josh or any member of our commercial team.



4000 East River Road NE
Rochester, MN 55906
507.280.1500
www.rpu.org


PRESORTED
STANDARD
US POSTAGE
PAID
Bluespire



Where to Find RPU

Find us on social media for the latest RPU news and updates!

 @rpuoutages for outage information

 @rpualerts for RPU news and general information

 Rochester Public Utilities

RPU SERVICE CENTER Holiday Hours

The RPU Service Center will be closed on:

Wednesday, July 4,
in observance of
Independence Day



American Public Power Association Lineworker Rodeo

RPU was represented by a Journeyman team and an Apprentice Lineworker at the American Public Power Association (APPA) Lineworker Rodeo held in Wake Forest, NC, from April 27-28.

The Journeyman team included Sean McDowell, Tanner Winter, and Colton Koster. The Apprentice Lineworker was Chad Grinhaus.

Sixty-six teams and 145 apprentices from municipal utilities across the nation participated.

The rodeo is a series of competitive events demonstrating lineworker skills and safe work practices.

The Journeyman Team competed in five events:

- 4kV 600 amp switch replacement
- 4kV four bell insulator change out
- 4kV crossarm change out
- 4kV jumper replacement
- Hurtman Rescue

The Apprentice events were:

- Double dead end bell change out

- Hurtman Rescue
- Rope Toss
- Guy wire change out
- Written test

All safety rules established by the Occupational Safety and Health Administration and the Association's Safety Manual were observed during events.

A qualified journeyman has more than four years of experience within the electric utility trade. An apprentice lineworker has four or fewer years of experience.

