



ROCHESTER
PUBLIC UTILITIES
WE PLEDGE, WE DELIVER™

2024 Electric Rules & Regulations





Frequency of Changes to Rules & Regs

- **Typically, a 3 Year Cycle**
- **Frequency Might be Sooner than 3 Years if a Significant Update is Needed**
- **There are no Legal or Statutory Requirements for Updates**
- **Frequency is Based upon Good Utility Practice**



Reasons to Make Rules & Regulations Changes?

- **NEC (National Electric Code) Changes**
- **NESC (National Electric Safety Code) Changes**
- **Requests from Building Safety**
- **Safety Enhancements**
- **Clarify Language**
- **Alignment with other Policies (Ex: Board Policy 31)**
- **Good Utility Practice**
- **Other**



Section 600



Sections 602.2, 602.3, & 606.2

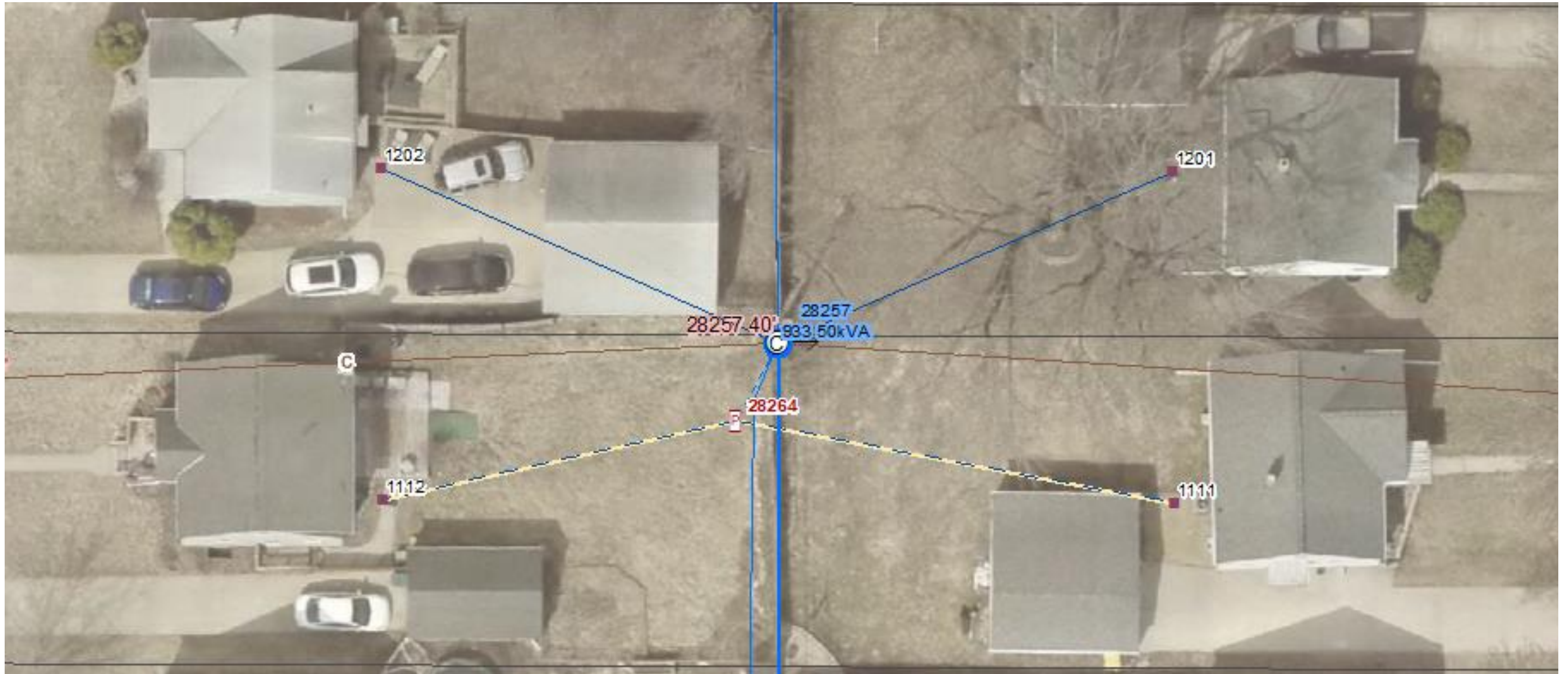
Meter Access for AMI & beyond - (Safety)

- **602.2** - Many existing electric meters are not accessible due to being blocked by vegetation and this will allow RPU to access meters blocked meters.
- **602.3** – This redline will minimize safety hazards for RPU crews that have to change meters
- **606.2** - This redline addition will minimize safety hazards for RPU crews that have to change meters



Section 800

Section 801 – Overhead Services & Undergrounding



Section 801.4 – Representative Example #1



Section 801.4 – Representative Example #2



Section 801.4 – Representative Example #3



Section 801.4 – Representative Example #4



QUESTIONS?