

COMMUNITY ROOM
4000 EAST RIVER ROAD NE
ROCHESTER, MN 55906

4:00 PM

VIEWING AND ATTENDING THE PUBLIC UTILITY BOARD MEETING

Individuals may attend the meeting in person at the RPU Service Center, Community Room

- Masks are required
- Spacing is limited, so electronic attendance is encouraged

View Meeting: Teams / Livestreaming

- Join the Teams meeting, livestream or view after the meeting by copying this link into a web browser: [Teams](#)
- A video of the meeting will be available on the City website to view following the meeting

Calling in to the Teams Meeting:

- Call: 1-347-352-4853
- Conference ID: 852 249 342#
- Press *6 to mute and unmute your phone

Call to Order

- 1. Approval of Agenda**
- 2. Safety Moment**
- 3. Consent Agenda**

1. Public Utility Board - Regular Meeting - Nov 30, 2021 4:00 PM
2. Review of Accounts Payable

NEW BUSINESS

Open Comment Period

(This agenda section is for the purpose of allowing citizens to address the Utility Board. Comments are limited to 4 minutes, total comment period limited to 15 minutes. Any speakers not having the opportunity to be heard will be the first to present at the next Board meeting.)

- 4. Consideration Of Bids**

1. Power Transformers Marion Road Substation
Resolution: Power Transformers Marion Road Substation

- 5. Regular Agenda**

1. Westinghouse Gas Turbine Overhaul Phase Two
Resolution: Westinghouse Gas Turbine Overhaul Phase Two

6. Informational

1. Diversity, Equity and Inclusion Action Plan

7. Board Liaison Reports

1. RPU Index of Board Policies

8. General Managers Report

9. Division Reports & Metrics

1. Division Reports and Metrics - December 2021

10. Other Business

11. Adjourn

The agenda and board packet for Utility Board meetings are available on-line at www.rpu.org and <http://rochestercitymn.iqm2.com/Citizens/Default.aspx>



MEETING MINUTES – NOVEMBER 30, 2021

COMMUNITY ROOM
4000 EAST RIVER ROAD NE
ROCHESTER, MN 55906

4:00 PM

VIEWING AND ATTENDING THE PUBLIC UTILITY BOARD MEETING

Individuals may attend the meeting in person at the RPU Service Center, Community Room

- Masks are required
- Spacing is limited, so electronic attendance is encouraged

View Meeting: Teams / Livestreaming

- Join the Teams meeting, livestream or view after the meeting by copying this link into a web browser: **Teams**
- A video of the meeting will be available on the City website to view following the meeting

Calling in to the Teams Meeting:

- Call: 1-347-352-4853
- Conference ID: 102 738 21#
- Press *6 to mute and unmute your phone

Call to Order

1. Approval of Agenda

1. **Motion to:** approve the agenda as presented

RESULT:	APPROVED [UNANIMOUS]
MOVER:	Brian Morgan, Board Member
SECONDER:	Brett Gorden, Board Member
AYES:	Gorden, Keane, Haskin, Johnson, Morgan

2. Safety Moment

Board Member Tim Haskin spoke regarding holiday lighting season safety.

NEW BUSINESS

Open Comment Period

(This agenda section is for the purpose of allowing citizens to address the Utility Board. Comments are limited to 4 minutes, total comment period limited to 15 minutes. Any speakers not having the opportunity to be heard will be the first to present at the next Board meeting.)

President Johnson opened the meeting for public comment. No one came forward to speak, and no public emails were received.

3. Consent Agenda

Minutes Acceptance: Minutes of Nov 30, 2021 4:00 PM (Consent Agenda)

1. Public Utility Board - Regular Meeting - Oct 26, 2021 4:00 PM
2. Review of Accounts Payable
3. **Motion to:** approve the consent agenda as presented

RESULT:	APPROVED [UNANIMOUS]
MOVER:	Brian Morgan, Board Member
SECONDER:	Tim Haskin, Board Member
AYES:	Gorden, Keane, Haskin, Johnson, Morgan

4. Consideration Of Bids

1. Lump Sum and Hourly Power Line Clearance Tree Services (2022)

Buyer Mona Hoeft presented a request to the board for approval of services for lump sum and hourly tree trimming for 2022. Lump sum bids were received on November 22, 2021. Several circuit feeders received no bids due to labor shortages. Staff recommended moving forward with lump sum bids from New Age Tree Service for circuits 305, 402 and 901, in the amount of \$817,764.00, for lump sum bids from Asplundh Tree Expert for circuits 301 and 612, in the amount of \$123,325.00, and for hourly work with Asplundh in the amount of \$653,861.00.

In 2020, the board approved year one spending of a five-year tree trimming contract for hourly services, which allows for increased labor and equipment costs in subsequent years. The hourly bid from Asplundh for year two services includes a 3% labor increase and a 2.25% gas surcharge for two pieces of heavily used equipment. Hourly crews perform day to day work.

Circuit feeders for lump sum work are chosen based on RPU's maintenance cycle.

Board Member Patrick Keane asked if this item was before the board as an annual requirement, or because the dollar amount exceeds staff approval levels. Ms. Hoeft stated that the contract exceeds the RPU general manager's approval limit of \$175,000, and staff also wanted to bring the supply chain and labor shortage issues to the attention of the board. Mr. Keane asked if the \$175,000 limit is still reasonable. General Manager Mark Kotschevar said it is, since it is tied to the state's bidding limit. Board Member Brian Morgan pointed out as projects are bid, gas surcharges are becoming more common. Mr. Kotschevar said that staff anticipates these increases as plans move forward for the Marion Road substation and will have to make additional decisions next year.

Resolution: Lump Sum and Hourly Power Line Clearance Tree Services

BE IT RESOLVED by the Public Utility Board of the City of Rochester, Minnesota, to approve a resolution for tree trimming services, subject to approved budget, as follows: Asplundh Tree Expert LLC in the amount of \$777,186 and New Age Tree Service of MN in the amount of \$817,764, and authorize the RPU project manager to perform the acts to execute the services not to exceed the approved budget. All awards are subject to applicable tax.

Passed by the Public Utility Board of the City of Rochester, Minnesota, this 30th day of November, 2021.

RESULT:	ADOPTED [UNANIMOUS]
MOVER:	Patrick Keane, Board Member
SECONDER:	Brett Gorden, Board Member
AYES:	Gorden, Keane, Haskin, Johnson, Morgan

5. Regular Agenda

1. Cascade Creek Controls Upgrade Project (GT2)

To take advantage of a discount, staff presented a request to the board to upgrade the control system at the Cascade Creek facility. The 5% discount was offered by Mitsubishi Power Aero LLC and requires the issuance of a purchase order by December 1, 2021. Power Resources Manager Tony Dzubay said included in the \$442,596.00 package from Mitsubishi are parts, configuration services, software, revised drawings and engineering to upgrade or replace end-of-life equipment for the GT2 turbine, all original from 2001. The 2022 budget had allocated \$500,000, and the proposed discount represents \$18,649.00 in savings on the equipment portion.

Board Member Brian Morgan asked if the overhaul project of the GT1 turbine will overlap with this project. Work on the GT2 turbine will be postponed until fall 2022 to avoid outages of both units, said Mr. Dzubay.

Resolution: Cascade Creek Controls Upgrade Project (GT2)

BE IT RESOLVED by the Public Utility Board of the City of Rochester, Minnesota, to approve a resolution to accept the proposal from Mitsubishi Power Aero LLC. in an amount of \$442,596.00 for the Cascade Creek controls upgrade project (GT2) and authorize the RPU Project Manager to perform the acts to execute the project within the project approved budget.

Passed by the Public Utility Board of the City of Rochester, Minnesota, this 30th day of November, 2021.

2. Well #16 Conversion Project - Change Order

At the April 27, 2021 meeting, the board approved a \$263,387.00 agreement with Traut Companies to convert RPU Well #16 to a four aquifer monitoring well, enabling the collection of groundwater and water quality data. Since that time, three change orders were necessary that exceeded the original project cost. Environmental and Regulatory Affairs Coordinator Todd Osweiler presented a request to the board for an additional \$28,836.00 to cover those costs.

Mr. Osweiler stated that during the final phase of the project, it was discovered that the Eau Claire shale formation collapsed and partially filled the well, requiring clean out prior to the installation of the monitoring wells. Although an additional \$25,000.00 contingency fund was also initially approved for the project, two earlier change orders, a \$2,384.00 performance bond and a \$18,000.00 packer testing (hydraulic and water quality testing), combined with the \$28,836.00 for removal of sediment, exceeded the fund amount. Mr. Osweiler stated the clean out costs are eligible for reimbursement from the matching \$165,000 grant RPU is receiving from the Minnesota Board of Soil and Water Resources. The project is expected to be completed by the second week in December 2021.

Board Member Patrick Keane asked who the different benefactors of the monitoring well will be. The Minnesota DNR, Minnesota Department of Health and others will be looking for data from the well and it will benefit all, said Mr. Osweiler.

Mr. Keane asked if the project will put added load or expense on the water utility. This will not put any extra burden on the water utility, said General Manager Mark Kotschevar, since the Minnesota Board of Soil and Water Resources grant has matching grant dollars. President Johnson asked if the change orders will exhaust the matching grant dollars. Mr. Osweiler stated that a few thousand dollars will be left, and the cost is reimbursable.

Board Member Brian Morgan asked how the first change order for the performance bond came about. Buyer Mona Hoeft stated that any work exceeding a cost of \$175,000 requires a performance bond per state law.

Resolution: Well #16 Conversion Project - Change Order

BE IT RESOLVED by the Public Utility Board of the City of Rochester, Minnesota, to approve Change Order #3 with Traut Companies in the amount of \$28,836.00 for the Well #16 Conversion Project.

Passed by the Public Utility Board of the City of Rochester, Minnesota, this 30th day of November, 2021.

6. Informational

1. Demand Side Management Programs

The RPU marketing team has been researching new programs to increase demand reduction of RPU's peak load to align with the goals of the 2030 Resource Plan, as originally presented to the board in May 2019 by consultants Burns and McDonnell. Some of the primary recommendations to meet an 80 kilowatt goal reduction by 2030 in conjunction with RPU's existing energy efficiency rebate programs include replacing the current direct load control air conditioning switch program with new technology, abandoning the direct load control water heater program, implementing a direct load control smart thermostat program, and implementing a direct load control electric vehicle (EV) charging program. To accomplish this, the team has been reaching out to area vendors as well as contacting other utilities to study their programs.

Manager of Marketing and Energy Services Patty Hanson said in 2022 and 2023, the team will define program parameters, create a statement of work/plan, implement and train for a buy-down direct install smart thermostat program through a distributed energy resource management provider (DERM) and an EV time-of-use rate that will evolve into direct load control through RPU or a DERM provider.

Board Member Brian Morgan asked if there have been lessons learned from the current time-of-use rate pilot program. Currently RPU has an incentivized whole-house time-of-use rate that includes EVs, said General Manager Mark Kotschevar, but a future program would add a separate car-only rate. This would require a second meter with costs associated and RPU is looking into those options, said Ms. Hanson. Minnesota's Eco Act allows RPU to take credit for kilowatt hours saved through efficient fuel-switching EV incentives and SMMPA, RPU's power provider, is looking into additional EV incentives, Mr. Kotschevar stated, such as RPU contributing to the cost of the second meter for the customer.

Will EV batteries in customers' garages actually help with peak demand, asked Board Member Patrick Keane? It depends on if that technology comes down in price to be cost effective and how customers want the utility to manage the asset in their home, said Mr. Kotschevar.

Mr. Morgan stated he would like to see program participation and registration become more web-based, such as these programs and RPU's Neighbors Chipping In program. Ms. Hanson said that smart thermostats already direct the customer to the RPU website/app and send push notifications upon installation, and there will be opportunities with the other programs for web-based participation. President Johnson stated she would not have been aware of RPU's Neighbors Chipping In program had she not been on the board, so more effort needs to be made to get the word out to customers and she supports more a more web-based approach.

Director of Customer Relations Krista Boston stated that in 2022 her team will be doing customer experience mapping exercises to look at demographics and psycho-graphics of the community, which will be captured in RPU's Diversity, Equity and Inclusion plan and will help to determine the target market for these energy efficiency programs.

Mr. Morgan has reached out to the City of Rochester's sustainability coordinator to present an informational session to the board on the Sustainability and Resilience Action Plan at the January meeting.

7. Board Liaison Reports

Revisions to the RPU board policies have been paused until January 2022, when the board's Policy Committee will look at the Customer Data Policy.

Board Member Brian Morgan asked if pausing the policy updates will impact recommendations or input to the infrastructure plan. General Manager Mark Kotschevar said he does not see any urgent items that need to be addressed.

8. General Managers Report

General Manager Mark Kotschevar reported that Chao Mwatela, the City's Director of Diversity, Equity and Inclusion (DEI), moderated a teammate symposium and shared City departmental DEI action plans. RPU staff will bring RPU's DEI goals to the board at the December board meeting as an informational item.

RPU has been asked to present the 2021 Resource Plan update to the Energy Commission on December 8. Mr. Kotschevar and Director of Power Resources Jeremy Sutton will be there to review the plan, seek comments/input and answer questions.

The Rochester City Council will vote to approve the 2022 City budget, which includes the RPU portion, on December 6. Mr. Kotschevar thanked RPU staff for their work on the budget.

RPU has been involved in the Sustainability and Resiliency Action Plan, and was identified as the lead for some of the initiatives. This will be brought to the board for review and comment in January.

9. Division Reports & Metrics

Board Member Brian Morgan observed that the energy market has tripled in wholesale prices from a month ago and asked if that is favorable. It is neutral right now, said General Manager Mark Kotschevar. That is because SMMPA is supplying RPU's energy needs and purchasing energy on the market, with Sherco 3 as their backstop to those prices, so although there are higher prices on the wholesale market for load, they are being paid higher revenues for the output out of Sherco, and Sherco has more capacity than load this time of year. Depending on how it is dispatched, they could actually receive more revenue from the plant than the purchase of the load. Mr. Kotschevar noted that prices are up mainly due to the rise in natural gas prices.

Board Member Patrick Keane stated he appreciates all the work that goes into putting the Division Reports together. Board Member Tim Haskin commended RPU staff for the Cayenta customer care software upgrade being on track. Go-live for the upgrade will happen December 6, and will impact internal interface, not customer interface.

10. Other Business

11. Adjourn

The agenda and board packet for Utility Board meetings are available on-line at www.rpu.org and <http://rochestercitymn.iqm2.com/Citizens/Default.aspx>

Submitted by:

Secretary

Approved by the Board

Board President

Date

Minutes Acceptance: Minutes of Nov 30, 2021 4:00 PM (Consent Agenda)

FOR BOARD ACTION**Agenda Item # (ID # 14285)****Meeting Date: 12/21/2021**

SUBJECT: Review of Accounts Payable

PREPARED BY: Colleen Keuten

ITEM DESCRIPTION:**UTILITY BOARD ACTION REQUESTED:**

ROCHESTER PUBLIC UTILITIES
A/P Board Listing By Dollar Range
For 11/13/2021 To 12/09/2021
Consolidated & Summarized Below 1,000

Greater than 50,000 :

1			
2			
3	SOUTHERN MN MUNICIPAL POWER A	November SMMPA Bill	6,299,697.35
4	NORTH RISK PARTNERS	Property Renewal 11/1/21-10/31/22	868,374.81
5	MN DEPT OF REVENUE	October Sales and Use Tax	690,372.25
6	CONSTELLATION NEWENERGY-GAS D	October Gas for WES	518,363.30
7	CONSTELLATION NEWENERGY-GAS D	October Gas for SLP	375,998.98
8	CONSTELLATION NEWENERGY-GAS D	October Gas for Cascade Creek	286,459.82
9	GE GRID SOLUTIONS, LLC REMIT	4EA-Circuit Breakers	210,000.00
10	ETHOSENERGY (P)	GT 1 Major Inspection	161,420.77
11	NEW AGE TREE SERVICE INC	405A Tree Clearance	159,966.23
12	SAP PUBLIC SERVICES INC	2022 SAP Enterprise Support	129,072.10
13	SCHWICKERTS COMPANY INC	SLP Turbine Roof Replacement	106,832.00
14	MN DEPT OF HEALTH	Community Water Supply Fee Oct-Dec 2021	96,828.00
15	A & A ELECT & UNDERGROUND CON	2017-2022 Directional Boring	95,853.50
16	PARAGON DEVELOPMENT SYSTEMS I	Server Replacement at Service Center	95,624.40
17	FS3 INC	16000FT-Conduit, HDPE, 5.00, Empty, SDR 1	95,360.00
18	ASPLUNDH TREE EXPERT LLC (P)	2021 Hourly Tree Trimming	70,164.81
19	SCHOEPPNER INC	Re-Construction of Well House #26	67,775.13
20	PAYMENTUS CORPORATION	October Credit/Debit/ACH Processing Fees	53,703.53
21			
22		Price Range Total:	10,381,866.98
23			

5,000 to 50,000 :

24			
25			
26	MEYERHOFER STEEL & CONSTRUCTI	Crane Service - GT Overhaul Project	49,240.00
27	CENTRAL MINNESOTA MUNICIPAL P	November Capacity	44,000.00
28	TRAUT COMPANIES	Install Monitor Wells and Seal Well #16	39,885.01
29	BADGER METER INC (P)	240EA-Meter, Bare E-Series 3/4"(57) Ultr	38,882.40
30	MASTEC NORTH AMERICA INC	2021 Joint Trench Directional Boring	34,647.31
31	SCHNEIDER ELECTRIC SMART GRID	Responder Adapter Implementation	34,577.48
32	N HARRIS COMPUTER CORP	Cayenta Upgrade	34,282.83
33	BARR ENGINEERING COMPANY (P)	Groundwater Consulting Services	25,486.39
34	TRAUT COMPANIES	Well #26 Rehabilitation	23,815.00
35	STUART C IRBY CO INC	50EA-Splice, 15kV, 500-750 MCM, C.S.	20,750.00
36	FITCH INC	Relationship Fee	20,000.00
37	PEOPLES ENERGY COOPERATIVE (P	November Territory Compensation	17,477.98
38	STUART C IRBY CO INC	150EA-Cutout, 15KV, 100A, NLB, Poly	15,750.00
39	THE ENERGY AUTHORITY INC	Renewable Energy Credits	15,045.00
40	US BANK - VOYAGER	November Fuel	19,964.62
41	VIKING ELECTRIC SUPPLY INC	1710FT-Conduit, 4", PVC Sch 40	14,645.81
42	CENTURYLINK (P)	21 Monthly Telecommunications	14,464.00
43	VISION COMPANIES LLC (P)	Employee Development	13,650.00
44	KFI ENGINEERS	Marion Rd Duct Bank Design	12,750.00
45	THOMPSON GARAGE DOOR CO INC	Warehouse Overhead Doors	12,702.09
46	KANTOLA CONSULTING	Cayenta,Time of Use & SEW Project Meetings	12,600.00
47	WELLS FARGO BANK ACCT ANALYSI	November Bank Fees	12,179.18
48	DAKOTA SUPPLY GROUP	6000FT-Conduit, HDPE, 2.50, Empty, Sch 4	11,940.00
49	ELCOR CONSTRUCTION INC	Watermain Reconstruction 20th St NW	11,489.18
50	S L CONTRACTING INC	Watermain Break Repair	11,470.00
51	NORTH RISK PARTNERS	2022 Agency Fee	11,000.00
52	GRAYBAR ELECTRIC COMPANY INC	1EA-Enclosure w/built in breakers	10,625.00

Attachment: AP Board List Current Month (14285 : Review of Accounts Payable)

ROCHESTER PUBLIC UTILITIES
A/P Board Listing By Dollar Range
For 11/13/2021 To 12/09/2021
Consolidated & Summarized Below 1,000

53	ATTANE INC	2020-23 RPU Plugged In Contract	10,613.85
54	STUART C IRBY CO INC	100EA-Cutout, 15KV, 100A, NLB, Poly	10,500.00
55	WARTSILA NORTH AMERICA	3EA-Valve, Solenoid-CV947, WES	10,420.20
56	L & S ELECTRIC INC	Westside Generator Maintenance	9,878.46
57	STUART C IRBY CO INC	30EA-Grd Sleeve, 3ph Encl., 18" x 67" x	9,300.00
58	STUART C IRBY CO INC	8EA-Metal Sec. Encl, 3ph, 30" x 67" x 22	9,120.00
59	ADVANTAGE DIST LLC (P)	5020GAL-Urea 32, WES	8,383.40
60	STUART C IRBY CO INC	30EA-Grd Sleeve, 1ph Trans., 37 x 43 x 1	7,950.00
61	GDS ASSOCIATES INC	2021 NERC Compliance Assistance	7,557.50
62	GDS ASSOCIATES INC	MISO Attachment O Consulting Service	7,186.25
63	PROPERTY TAXES OLMSTED COUNTY	2nd-1/2 Prop Tax SolarStone-5 Parcels	7,138.87
64	MALLOY ELECTRIC dba	1EA-VFD, 150HP, 3ph, 460V	6,965.40
65	AWWA RESEARCH FOUNDATION	2022 Membership	6,666.00
66	CITY OF ROCHESTER	Q4 City Attorney Services	6,250.00
67	KATS EXCAVATING LLC	Service Assured Service Repair	6,250.00
68	HAWKINS INC	655GAL-Carus 8500 Aqua Mag Phosphate	6,058.75
69	STUART C IRBY CO INC	1EA-Trans, PM, 3ph, 45kVA, 13.8/8,208/120	6,052.00
70	KATS EXCAVATING LLC	Service Assured Meter Valve Replaced	5,900.00
71	NALCO COMPANY LLC	1DRM-Rinse, Resin, NALCO 7293.15	5,890.14
72	TESCO AN ADVENT COMPANY dba	1EA-Reverse Desktop Meter Station	5,868.00
73	PUGLEASA COMPANY INC	Impact Door	5,827.52
74	BORDER STATES ELECTRIC SUPPLY	200EA-Elbow, 15kV, 200A, LB, 1/0 Sol, 175-	5,822.00
75	ARCHKEY TECHNOLOGIES dba	Camera and Cabling Work at Service Center	5,684.06
76	WIESER PRECAST STEPS INC (P)	1EA-Pulling Vault, Combined	5,627.15
77	BURNS & MCDONNELL INC (P)	Resource Plan 2021	5,291.47
78	VERIZON WIRELESS	2021 Cell & iPad Monthly Service	5,264.84
79	ENVIRONMENTAL RESOURCES OLMST	Lab Costs-Ground Water Monitoring Proj-Wells	5,264.00
80	DAKOTA SUPPLY GROUP	10EA-Elbow, Steel, 36.0 R, 5.00	5,228.10
81	PARAGON DEVELOPMENT SYSTEMS I	2021 IT Help Desk Consultant	5,120.00
82	EPLUS TECHNOLOGY INC	2EA-CATALYST CISCO FIREPOWER 1120 NGFW	5,097.12
83			
84		Price Range Total:	791,494.36
85			
86	<u>1,000 to 5,000 :</u>		
87			
88	CLARK CONCRETE INC	Replace 4 City Sidewalks	4,717.47
89	HAWKINS INC	46EA-Chlorine Gas	4,697.52
90	DAKOTA SUPPLY GROUP	3000FT-Conduit, HDPE, 2.00 Orange W/Blue	4,590.00
91	KNXR - FM	Ads-Tree Trimming Safety Message	4,500.00
92	DAKOTA SUPPLY GROUP	750FT-Conduit, 3", Corrugated PVC	4,368.98
93	FRANKLIN ELECTRIC	2EA-LTC, Position Indicator (+/-1) 1511-	4,238.52
94	UNITED RENTALS INC	Equipment Rental for WES	4,133.60
95	IHEART MEDIA dba	Ads-Tree Trimming Safety Message	3,993.62
96	CONSOLIDATED COMMUNICATIONS d	2021-22 Network and Co-location Services	3,975.32
97	SMIDT CONSTRUCTION	Door Frame Remodel-Willow Substation	3,946.89
98	HAWKINS INC	10048.5LB-Hydrofluosilicic Acid	3,818.43
99	ELITE CARD PAYMENT CENTER	Shawn Timbers Tripwire Administrator Training	3,750.00
100	NFRONT CONSULTING LLC	2021 MISO Forecast-Proj Task Order 5	3,645.00
101	WESCO DISTRIBUTION INC	10EA-Elbow, 15kV, 600A, NLB, 4/0 AL Comp	3,599.20
102	ARCHKEY TECHNOLOGIES dba	Zumbro River Fiber Work	3,055.00
103	MINNESOTA ENERGY RESOURCES CO	Natural Gas CSC	3,048.67
104	STUART C IRBY CO INC	16EA-Grd Sleeve, 1ph Sect. Encl, 30 x 18	2,928.00

Attachment: AP Board List Current Month (14285 : Review of Accounts Payable)

ROCHESTER PUBLIC UTILITIES
A/P Board Listing By Dollar Range
For 11/13/2021 To 12/09/2021
Consolidated & Summarized Below 1,000

105	ALTERNATIVE TECHNOLOGIES INC	Oil Sample Testing	2,925.00
106	GRAYBAR ELECTRIC COMPANY INC	1EA-Cable cutter	2,900.20
107	MIDCONTINENT ISO INC	November MISO Fees	2,775.30
108	SAFETY-KLEEN SYSTEMS INC	Oil Water Separator Cleaned	2,731.25
109	SIDE EFFECTS INC	Public Power Communication-High School Signage	2,700.00
110	STONE BY STONE PLUS LLC	Transformer Pad	2,600.00
111	TWIN CITY SECURITY INC	2021 Security Services	2,597.06
112	MERIT CONTRACTING INC (P)	Five Roof Inspections	2,534.01
113	STUART C IRBY CO INC	2EA-Trans, PM, 1ph, 15kVA, 13.8/8, 480	2,524.00
114	HAWKINS INC	2EA-Hydro Vacuum Regulator, 300 Series	2,500.00
115	EPLUS TECHNOLOGY INC	EMS-Security and Switching	2,380.32
116	MN SUPPLY COMPANY INC (P)	Replace Driver Board-Materials & Labor	2,350.00
117	VAN METER INC dba	2000FT-Wire, AL, 600V, 1/0-#2 NEU YS Tri	2,329.71
118	WESCO DISTRIBUTION INC	5EA-Junction, NLB, 600A, 3 Position, w/B	2,245.45
119	WESCO DISTRIBUTION INC	Freight for PO 45-60491	2,242.24
120	BORDER STATES ELECTRIC SUPPLY	Lighted Power Kit,80 FT Cable-120V,End S	2,235.39
121	VAN METER INC dba	165GAL-Cable Pulling Lube	2,235.14
122	EPLUS TECHNOLOGY INC	2022 Avocent Maintenance	2,207.44
123	HATHAWAY TREE SERVICE INC	Brush Dump	2,100.00
124	KENNEDY & GRAVEN CHARTERED	Legal, Small Cell Matters	2,081.85
125	WESCO DISTRIBUTION INC	76EA-Elbow, 15kV, 200A, LB, 1/0 Sol,175-2	2,076.32
126	BORDER STATES ELECTRIC SUPPLY	6EA-Switch, Air, Line Tap, 1ph, 900A, NL	2,040.00
127	BOWMANS DOOR SOLUTIONS	Installation of New Door at WCS	1,977.19
128	VIKING ELECTRIC SUPPLY INC	1000FT-Wire, Copper, #2 Str, Bare	1,926.67
129	CLARK CONCRETE INC	Concrete Restoration	1,900.00
130	SARGENTS LANDSCAPE NURSERY IN	Mulch for RPU	1,881.00
131	BECKWITH ELECTRIC CO INC	1EA-Relay, Beckwith, M2001C-6TL Controll	1,868.00
132	ELITE CARD PAYMENT CENTER	22EA-Pants, Fire Hose, Fleece-Lined	1,859.00
133	SORENSEN & SORENSEN PAINTING	Epoxy Flooring Repair near Loading Dock	1,800.00
134	CENTRAL STATES GROUP	4EA-Packing Kit,Inlet Valve, Inst. Air-D	1,786.95
135	BOLTON AND MENK (P)	St. Mary's TMOB Modifications	1,750.00
136	PULVER MOTOR SERVICE	Crane Service for GT1 Overhaul	1,699.31
137	FORD METRO INC	SLP Window Replacement	1,685.42
138	MISSISSIPPI WELDERS SUPPLY CO	Calibration Gases	1,676.02
139	UNITED RENTALS INC	Forklift Service	1,673.66
140	CHS ROCHESTER	Fuel for Generators	1,660.48
141	BORDER STATES ELECTRIC SUPPLY	10000FT-Wire, Tracer, Orange, #12, CCS	1,633.70
142	WESCO DISTRIBUTION INC	65EA-Deadend Recept, 15kv, 200A, NLB	1,594.45
143	READY MIX CONCRETE COMPANY LL	Concrete Barriers	1,587.09
144	VERIZON CONNECT NWF INC	November 2021 GPS Fleet Tracking	1,586.62
145	AMARIL UNIFORM COMPANY	8EA-Sweatshirt, FR two-tone, hooded	1,530.45
146	ARCHKEY TECHNOLOGIES dba	Workstation Cables	1,510.14
147	U S POSTMASTER	Annual Caller Box Fee #4011	1,500.00
148	PAAPE ENERGY SERVICE INC	HVAC Controls-Labor & Materials	1,498.39
149	NARDINI FIRE EQUIPMENT CO INC	Halon Inspection	1,484.50
150	DIGI-KEY CORPORATION	3EA-Ethernet to Serial Adapter Card RS-2	1,446.00
151	WESCO DISTRIBUTION INC	100EA-Grnd Clamp, 2 Cable to Flat. #4-30	1,434.00
152	OPTIV SECURITY INC	2021-2022 J-Care Support	1,433.94
153	ADVANTAGE DIST LLC (P)	Service Fleet Fluids	1,428.49
154	KNIPSCHILD TERRENCE	Customer refunds 9755	1,404.09
155	ELITE CARD PAYMENT CENTER	Transformer Trng-NMensink,BKimery,JCCasey	1,395.00
156	VIKING ELECTRIC SUPPLY INC	1890FT-Wire, Copper, #6 SD Solid, Bare	1,381.54

Attachment: AP Board List Current Month (14285 : Review of Accounts Payable)

ROCHESTER PUBLIC UTILITIES
A/P Board Listing By Dollar Range
For 11/13/2021 To 12/09/2021
Consolidated & Summarized Below 1,000

157	WIESER PRECAST STEPS INC (P)	1EA-Grd Sleeve, Switch Basement, PME	1,355.00
158	EGAN COMPANY	SLP Fire Alarm Testing	1,335.94
159	HI LINE UTILITY SUPPLY CO (P)	5ROL-Pull Tape, Printed, .750" x 3000'	1,294.15
160	CITY OF ROCHESTER	Oct 2021 Workers Comp Admin Fees	1,282.00
161	MIRATECH GROUP LLC	1EA-Pulsation dampener 4.0 L, WS, UIS	1,279.91
162	NARDINI FIRE EQUIPMENT CO INC	GT2 Fire System Testing	1,276.62
163	U S A SAFETY SUPPLY	40EA-Cap, Beanie Style Stocking Cap, FR	1,264.97
164	WESCO DISTRIBUTION INC	30EA-Conn, Fire-On Stirrup, 336.4, ACSR	1,245.60
165	AMAZON.COM	VIVO Quad Desk Mount,2-iPad Cases,Splitter	1,223.21
166	NATIONWIDE DI WATER SOLUTIONS	4EA-DI Vessels, Mixed Bed, CC	1,200.00
167	HAWKINS INC	2EA-Auto Switchover Module 771, 100ppd m	1,200.00
168	U S A SAFETY SUPPLY	24PR-Gloves, Leather Work, Lite Duty, La	1,186.31
169	CITY OF ROCHESTER	NERC Comp Mgr & Chief Sys Oper Job Ads	1,150.00
170	VIKING ELECTRIC SUPPLY INC	Fittings for Control Panel	1,113.64
171	U S A SAFETY SUPPLY	96PR-Gloves, Cut Resistant, 2XL (SC)	1,112.18
172	SENNE REBECCA	CIP-AirSrc Heat Pumps-Incentives/Rebates	1,100.00
173	STUART C IRBY CO INC	24PR-Glove, Leather Protector 10.0, Low	1,082.43
174	KIRBY WALKER	Customer refunds 9754	1,053.11
175	GENERAL REPAIR SERVICE	1EA-Pump, Centrifugal	1,047.00
176	ELITE CARD PAYMENT CENTER	Travel,APPA Legal/Reg Conf, GA, Lodging	1,026.10
177	AMARIL UNIFORM COMPANY	5EA-Sweatshirt, FR two-tone, hooded zip	1,009.97
178	WARNING LITES OF MN INC (P)	Traffic Safety for WM Break	1,006.80
179	WIESER PRECAST STEPS INC (P)	1EA-Cover, Ground Sleeve, Split	1,000.00
180			
181		Price Range Total:	196,153.94
182			
183	<u>0 to 1,000 :</u>		
184			
185	ELITE CARD PAYMENT CENTER	Summarized transactions: 53	16,059.22
186	Customer Refunds (CIS)	Summarized transactions: 82	10,505.36
187	REBATES	Summarized transactions: 47	8,648.08
188	AMARIL UNIFORM COMPANY	Summarized transactions: 47	8,449.68
189	BORDER STATES ELECTRIC SUPPLY	Summarized transactions: 20	5,711.70
190	BOLTON AND MENK (P)	Summarized transactions: 7	4,815.00
191	EXPRESS SERVICES INC	Summarized transactions: 5	4,241.94
192	RESCO	Summarized transactions: 12	4,176.96
193	WESCO DISTRIBUTION INC	Summarized transactions: 9	3,993.33
194	VIKING ELECTRIC SUPPLY INC	Summarized transactions: 32	3,717.66
195	CITY LAUNDRING COMPANY	Summarized transactions: 20	3,712.16
196	AMAZON.COM	Summarized transactions: 40	3,671.02
197	LAWSON PRODUCTS INC (P)	Summarized transactions: 12	3,634.76
198	STUART C IRBY CO INC	Summarized transactions: 17	3,280.26
199	NETWORK SERVICES COMPANY	Summarized transactions: 12	2,698.26
200	CITY OF ROCHESTER	Summarized transactions: 9	2,627.72
201	MENARDS ROCHESTER NORTH	Summarized transactions: 7	2,441.29
202	VAN METER INC dba	Summarized transactions: 20	2,428.96
203	KYLLO TODD	Summarized transactions: 7	2,359.08
204	U S A SAFETY SUPPLY	Summarized transactions: 22	2,157.11
205	SAP PUBLIC SERVICES INC	Summarized transactions: 4	1,840.55
206	MINNESOTA ENERGY RESOURCES CO	Summarized transactions: 4	1,786.28
207	FIRST CLASS PLUMBING & HEATIN	Summarized transactions: 5	1,513.70
208	MISSISSIPPI WELDERS SUPPLY CO	Summarized transactions: 13	1,495.62

Attachment: AP Board List Current Month (14285 : Review of Accounts Payable)

ROCHESTER PUBLIC UTILITIES
A/P Board Listing By Dollar Range
For 11/13/2021 To 12/09/2021
Consolidated & Summarized Below 1,000

209	GRAYBAR ELECTRIC COMPANY INC	Summarized transactions: 8	1,372.07
210	HAWKINS INC	Summarized transactions: 13	1,364.11
211	CENTRAL STATES GROUP	Summarized transactions: 7	1,320.64
212	CONCAST INC	Summarized transactions: 5	1,255.78
213	CORPORATE WEB SERVICES INC	Summarized transactions: 2	1,233.14
214	INGERSOLL RAND COMPANY	Summarized transactions: 5	1,223.56
215	GARCIA GRAPHICS INC	Summarized transactions: 7	1,162.50
216	SARGENTS LANDSCAPE NURSERY IN	Summarized transactions: 8	1,119.38
217	INNOVATIVE OFFICE SOLUTIONS L	Summarized transactions: 4	1,109.41
218	THOMAS TOOL & SUPPLY INC	Summarized transactions: 5	1,099.70
219	FASTENAL COMPANY	Summarized transactions: 17	1,049.24
220	SOMA CONSTRUCTION INC	Summarized transactions: 1	988.70
221	ROCHESTER ARMORED CAR CO INC	Summarized transactions: 1	967.82
222	A T & T	Summarized transactions: 2	938.19
223	KENNEDY & GRAVEN CHARTERED	Summarized transactions: 1	925.00
224	TECHNOLOGY FOR ENERGY CORPORA	Summarized transactions: 3	913.78
225	ELECTRIC SCIENTIFIC CO INC	Summarized transactions: 1	908.44
226	CENTURYLINK (P)	Summarized transactions: 4	906.60
227	WARTSILA NORTH AMERICA	Summarized transactions: 5	878.17
228	ARNOLDS A KLEEN-TECH COMPANY	Summarized transactions: 7	876.91
229	MIRATECH GROUP LLC	Summarized transactions: 6	876.50
230	ELECTROREP ENERGY PRODUCTS IN	Summarized transactions: 3	800.65
231	TWIN CITY SECURITY INC	Summarized transactions: 1	779.12
232	NORTH CENTRAL INTERNATIONAL L	Summarized transactions: 3	765.53
233	STENCIL GROUP LLC/STENCIL HOM	Summarized transactions: 1	760.00
234	VIOLA NURSERY AND GREENHOUSE	Summarized transactions: 2	755.12
235	THE ENERGY AUTHORITY INC	Summarized transactions: 1	753.80
236	LANGUAGE LINE SERVICES INC	Summarized transactions: 1	752.56
237	UNITED RENTALS INC	Summarized transactions: 3	746.59
238	J B CONTROLS INC	Summarized transactions: 2	745.49
239	HYBRID MECHANICAL	Summarized transactions: 1	700.00
240	AMERICAN PRESSURE INC	Summarized transactions: 1	672.25
241	NEW LINE MECHANICAL (P)	Summarized transactions: 1	670.00
242	ON SITE SANITATION INC	Summarized transactions: 2	666.96
243	ADVANCE AUTO PARTS	Summarized transactions: 19	658.99
244	DAKOTA SUPPLY GROUP	Summarized transactions: 14	654.83
245	CORE & MAIN LP (P)	Summarized transactions: 2	654.58
246	FLEETPRIDE INC	Summarized transactions: 2	650.84
247	CITY LAUNDERING COMPANY	Summarized transactions: 4	646.60
248	ARCHKEY TECHNOLOGIES dba	Summarized transactions: 3	629.72
249	ROCH REGIONAL SCIENCE FAIR	Summarized transactions: 1	600.00
250	ADVANTAGE DIST LLC (P)	Summarized transactions: 4	594.76
251	POWERMATION DIVISON	Summarized transactions: 2	582.20
252	CLARK CONCRETE INC	Summarized transactions: 1	561.09
253	T E C INDUSTRIAL INC	Summarized transactions: 3	543.78
254	TOTAL SAFETY, SUPPLIES AND SO	Summarized transactions: 3	535.86
255	MUELLER MATTHEW	Summarized transactions: 1	533.40
256	GATEWAY	Summarized transactions: 1	500.00
257	HALLBERG ENGINEERING INC	Summarized transactions: 1	500.00
258	INSPEC INC.	Summarized transactions: 1	500.00
259	POMPS TIRE SERVICE INC	Summarized transactions: 2	497.75
260	CRESCENT ELECTRIC SUPPLY CO	Summarized transactions: 6	490.20

Attachment: AP Board List Current Month (14285 : Review of Accounts Payable)

ROCHESTER PUBLIC UTILITIES
A/P Board Listing By Dollar Range
For 11/13/2021 To 12/09/2021
Consolidated & Summarized Below 1,000

261	ETHOSENERGY (P)	Summarized transactions: 2	486.58
262	LUHMANN ABE	Summarized transactions: 4	472.52
263	USA BLUE BOOK DBA	Summarized transactions: 2	470.29
264	ZEE MEDICAL SERVICE INC (P)	Summarized transactions: 3	468.04
265	OLSEN CHAIN & CABLE CO INC	Summarized transactions: 8	462.13
266	MIDWEST MECHANICAL SOLUTIONS	Summarized transactions: 2	447.45
267	TESCO AN ADVENT COMPANY dba	Summarized transactions: 2	446.86
268	BADGER METER INC (P)	Summarized transactions: 2	441.98
269	STILLER NEIL	Summarized transactions: 2	420.00
270	N HARRIS COMPUTER CORP	Summarized transactions: 4	401.01
271	K A A L TV LLC	Summarized transactions: 1	400.00
272	NORTHERN / BLUETARP FINANCIAL	Summarized transactions: 6	396.30
273	TOKAY SOFTWARE dba	Summarized transactions: 1	395.44
274	GILLUND ENTERPRISES	Summarized transactions: 4	393.85
275	BARR ENGINEERING COMPANY (P)	Summarized transactions: 1	369.00
276	DAKOTA RIGGERS	Summarized transactions: 4	368.46
277	ERC WIPING PRODUCTS INC	Summarized transactions: 5	361.24
278	EPLUS TECHNOLOGY INC	Summarized transactions: 1	350.43
279	MN DEPT OF LABOR & INDUSTRY	Summarized transactions: 4	350.00
280	ADVANCED ELEMENTS INC	Summarized transactions: 1	336.00
281	ALTERNATIVE TECHNOLOGIES INC	Summarized transactions: 1	325.00
282	PARK PLACE TECHNOLOGIES LLC	Summarized transactions: 7	316.68
283	GRAINGER INC	Summarized transactions: 5	315.81
284	DAVIES PRINTING COMPANY INC	Summarized transactions: 1	300.59
285	PROGRESSIVE BUSINESS PUBLICAT	Summarized transactions: 1	299.00
286	STAY VISIBLE LLC	Summarized transactions: 3	298.50
287	NAPA AUTO PARTS dba	Summarized transactions: 4	295.68
288	ALLEGRA OF ROCHESTER LLC	Summarized transactions: 2	294.50
289	MN SUPPLY COMPANY INC (P)	Summarized transactions: 1	293.91
290	STAR ENERGY SERVICES LLC	Summarized transactions: 1	286.00
291	MCMASTER CARR SUPPLY COMPANY	Summarized transactions: 5	272.62
292	VANCO SERVICES LLC	Summarized transactions: 1	261.70
293	CHARTER COMMUNICATIONS	Summarized transactions: 2	250.24
294	PREMIER ELECTRICAL CORP dba	Summarized transactions: 2	245.47
295	BECKWITH ELECTRIC CO INC	Summarized transactions: 2	245.21
296	MITSUBISHI POWER AERO LLC (P)	Summarized transactions: 2	244.79
297	LOCATORS AND SUPPLIES	Summarized transactions: 3	237.05
298	COOK STEVEN J	Summarized transactions: 1	236.00
299	NARDINI FIRE EQUIPMENT CO INC	Summarized transactions: 2	235.98
300	BREKKE MATTHEW	Summarized transactions: 2	229.00
301	GLOBAL INDUSTRIAL (P)	Summarized transactions: 3	221.43
302	RONCO ENGINEERING SALES INC	Summarized transactions: 1	219.43
303	VERIZON WIRELESS	Summarized transactions: 1	211.99
304	KEANE PATRICK	Summarized transactions: 1	205.00
305	RENDLER SCOTT	Summarized transactions: 3	201.82
306	RONCO ENGINEERING SALES INC	Summarized transactions: 2	201.33
307	KOTSCHVAR MARK	Summarized transactions: 1	200.48
308	PROPERTY RECORDS OLMSTED COUN	Summarized transactions: 2	200.00
309	ELITE CARD PAYMENT CENTER	Summarized transactions: 4	199.10
310	ULINE	Summarized transactions: 3	194.59
311	FRONTIER	Summarized transactions: 1	187.30
312	DAKOTA SUPPLY GROUP	Summarized transactions: 1	178.50

Attachment: AP Board List Current Month (14285 : Review of Accounts Payable)

ROCHESTER PUBLIC UTILITIES
A/P Board Listing By Dollar Range
For 11/13/2021 To 12/09/2021
Consolidated & Summarized Below 1,000

313	FEDEX SHIPPING	Summarized transactions: 5	170.24
314	DELMAR COMPANY	Summarized transactions: 4	170.09
315	VIKING ELECTRIC SUPPLY INC	Summarized transactions: 1	169.52
316	TOTAL RESTAURANT SUPPLY	Summarized transactions: 7	164.78
317	HI LINE UTILITY SUPPLY CO (P)	Summarized transactions: 1	163.35
318	HY VEE	Summarized transactions: 1	159.90
319	SUPERIOR COMPANIES OF MINNESO	Summarized transactions: 1	147.00
320	SOUND AND MEDIA SOLUTIONS	Summarized transactions: 1	144.28
321	BROCK WHITE COMPANY LLC (P)	Summarized transactions: 1	138.94
322	SANCO ENTERPRISES	Summarized transactions: 4	138.08
323	LOCATORS AND SUPPLIES	Summarized transactions: 3	136.85
324	WATER SYSTEMS COMPANY	Summarized transactions: 2	129.30
325	DAVE SYVERSON TRUCK CENTER IN	Summarized transactions: 1	123.88
326	CHS ROCHESTER	Summarized transactions: 2	119.99
327	HUMPHREY STEPHANIE	Summarized transactions: 3	109.83
328	DIGI-KEY CORPORATION	Summarized transactions: 2	106.88
329	MENARDS ROCHESTER SOUTH	Summarized transactions: 2	105.01
330	C & N UPHOLSTERY	Summarized transactions: 1	95.00
331	FORUM COMMUNICATIONS COMPANY	Summarized transactions: 2	86.94
332	SLEEPY EYE TELEPHONE CO	Summarized transactions: 1	84.76
333	CLAREY'S SAFETY EQUIPMENT dba	Summarized transactions: 1	80.16
334	UTC MEMBERSHIP DEPT	Summarized transactions: 1	75.00
335	THOMAS TOOL & SUPPLY INC	Summarized transactions: 1	69.98
336	AUTO VALUE ROCHESTER INC	Summarized transactions: 2	62.41
337	STAR TRIBUNE	Summarized transactions: 1	58.27
338	ROCHESTER CHEVROLET CADILLAC	Summarized transactions: 1	56.96
339	MANAHAN MACHINE SHOP INC	Summarized transactions: 2	52.94
340	ALLSTATE PETERBILT GROUP	Summarized transactions: 1	51.86
341	GENERAL REPAIR SERVICE	Summarized transactions: 1	51.29
342	BAUER BUILT INC (P)	Summarized transactions: 3	49.96
343	ALL SEASONS POWER & SPORT INC	Summarized transactions: 1	48.07
344	LITTLE DAVID	Summarized transactions: 1	46.15
345	MENARDS ROCHESTER SOUTH	Summarized transactions: 2	44.91
346	REINDERS INC	Summarized transactions: 1	42.58
347	SOLID WASTE OLMSTED COUNTY	Summarized transactions: 1	40.32
348	CREDIT MANAGEMENT LP	Summarized transactions: 1	36.67
349	NORTH AMERICAN ELECTRIC RELIA	Summarized transactions: 1	35.53
350	MENARDS ROCHESTER NORTH	Summarized transactions: 2	35.20
351	CENTRAL FINANCE OLMSTED COUNT	Summarized transactions: 1	33.74
352	MINNESOTA ENERGY RESOURCES CO	Summarized transactions: 1	27.23
353	REBATES	Summarized transactions: 1	25.00
354	BURGGRAF'S ACE ROCHESTER	Summarized transactions: 1	24.57
355	BLEESS NATE	Summarized transactions: 1	19.00
356	NORTHERN / BLUETARP FINANCIAL	Summarized transactions: 1	18.99
357	READY MIX CONCRETE COMPANY LL	Summarized transactions: 1	18.56
358	FEDEX SHIPPING	Summarized transactions: 1	18.15
359	BOWMANS DOOR SOLUTIONS	Summarized transactions: 2	17.30
360	L & S ELECTRIC INC	Summarized transactions: 1	16.03
361	CITY OF ROCHESTER	Summarized transactions: 1	15.00
362	A T & T MOBILITY	Summarized transactions: 1	10.02
363	CDW GOVERNMENT INC	Summarized transactions: 2	4.52
364			

Attachment: AP Board List Current Month (14285 : Review of Accounts Payable)

ROCHESTER PUBLIC UTILITIES
A/P Board Listing By Dollar Range
For 11/13/2021 To 12/09/2021
Consolidated & Summarized Below 1,000

365
366
367
368

Price Range Total: 168,351.28

Grand Total: 11,537,866.56

Attachment: AP Board List Current Month (14285 : Review of Accounts Payable)

FOR BOARD ACTION

Agenda Item # (ID # 14281)

Meeting Date: 12/21/2021

SUBJECT: Power Transformers Marion Road Substation

PREPARED BY: Mona Hoeft

ITEM DESCRIPTION:

Three bids were received on December 1st for two 20 MVA outdoor power transformers for the Marion Road Substation. Greg Anderson, GW Anderson & Associates, was hired by RPU to assist in the bidding process given his expertise in engineering, design and the supplier manufacturing process. Greg participated in the evaluation that included life cycle costs on guaranteed electrical losses over 20 years and conformance to the specifications and concurs with the decision being requested today.

Evaluated bids as follows:

Vendor	Loss Evaluated Bid	Bid Submittal
Dakota Supply Group/GE Prolec	\$2,393,980	\$1,830,100
Primus Marketing/ABB-Hitachi	\$3,330,155	\$2,704,530
Delta Star	\$3,574,966	\$2,979,316

After final evaluation was completed, the lowest evaluated bidder, Dakota Supply Group, proposed GE Prolec transformers which meet the specification. The equipment costs are subject to metals adjustment which may change the final price by the time of delivery in 32-36 weeks. The awarded supplier will deliver the equipment on an RPU foundation. Although field services are included in the bid price, there may be unforeseen circumstances. Staff is planning to purchase essential spare parts which will be known following design approval. Given these potential additional costs, staff is seeking approval of a 7% contingency (\$128,107) and approval for the RPU Project Manager to perform the acts to execute the project.

The budget for this portion of the project was \$2 million.

UTILITY BOARD ACTION REQUESTED:

Staff recommends the board accept the bid from Dakota Supply Group for the purchase of two GE Prolec outdoor transformers in the amount of \$1,830,100, approve contingency of \$128,107 and authorize the RPU Project Manager to perform the acts to execute the project.

RESOLUTION

BE IT RESOLVED by the Public Utility Board of the City of Rochester, Minnesota, to accept the bid from Dakota Supply Group for the purchase of two GE Prolec outdoor transformers for the Marion Road Substation in the amount of \$1,830,100.00. Approve contingency of \$128,107 and authorize the RPU Project Manager to perform the acts to execute the project.

Passed by the Public Utility Board of the City of Rochester, Minnesota, this 21st day of December, 2021.

President

Secretary

FOR BOARD ACTION

Agenda Item # (ID # 14280)

Meeting Date: 12/21/2021

SUBJECT: Westinghouse Gas Turbine Overhaul Phase Two

PREPARED BY: Tony Dzubay

ITEM DESCRIPTION:

In July, the board approved Phase One of the major overhaul project on the Westinghouse gas turbine (GT1) in the amount of \$900,000. Phase One began in October 2021 and included inspection, disassembly and shipping of components to an Ethos Energy plant in Texas. Disassembly and shipping has been completed and the condition assessment report is expected by the mid to end of December. The detailed report will provide a clear picture of actual repair costs and life expectancy of other parts should RPU move forward with Phase Two. Ethos is seeking a go, no-go decision following receipt and analysis of the report to keep the project moving forward, manage long lead times and prevent tying up storage space in their facility. Given the date of the January board meeting, staff is seeking approval from the board to delegate this decision, based on the recommendations of Ethos Energy and not to exceed the \$2.5 million budgeted amount, to the General Manager.

Subject to the GM's decision to move forward, staff is seeking approval of Phase Two and would then include the repair and reassembly of the gas turbine components with a completion date by the end of May, 2022. The 2022 approved budget has allocated \$2.5 million for this phase of this project. The board is also asked to approve authorizing the RPU Project Manager to perform the acts to execute the project.

An update on the project will be presented at the January board meeting.

UTILITY BOARD ACTION REQUESTED:

Delegate the decision on whether to move the project forward, following review and analysis of the condition inspection report, to the General Manager and subject to that decision, approve Phase Two of the Westinghouse Gas Turbine Overhaul Project in the amount of \$2.5 million and authorize the RPU Project Manager to perform the acts to execute Phase Two.

RESOLUTION

BE IT RESOLVED by the Public Utility Board of the City of Rochester, Minnesota, to approve delegating the decision on whether to move the project forward to the General Manager and subject to that decision, approve Phase Two of the Westinghouse Gas Turbine Overhaul Project in the amount of \$2.5 million and authorize the RPU Project Manager to perform the acts to execute Phase Two.

Passed by the Public Utility Board of the City of Rochester, Minnesota, this 21st day of December, 2021.

President

Secretary

FOR BOARD ACTION

Agenda Item # (ID # 14284)

Meeting Date: 12/21/2021

SUBJECT: Diversity, Equity and Inclusion Action Plan

PREPARED BY: Deb Donahue

ITEM DESCRIPTION:

Staff will present and review the RPU Diversity, Equity and Inclusion Action Plan for 2022.

UTILITY BOARD ACTION REQUESTED:

No action requested. Informational only.



ROCHESTER PUBLIC UTILITIES

Diversity, Equity and Inclusion Strategic Plan/Action Plan
2021-22



ROCHESTER
PUBLIC UTILITIES
WE PLEDGE, WE DELIVER

MISSION

We Will Set the Standard for Service

VISION

We provide the highest quality services and products for our customers. With our experience and resources, we enrich people's lives, help businesses prosper, and promote the community's welfare.

CORE VALUES

SAFETY

Protect every individual

INTEGRITY

Demonstrate honesty, respect, and good faith

SERVICE

Leave every individual with a positive impression

STEWARDSHIP

Protect our environment through the wise use of resources

ACCOUNTABILITY

Take ownership and responsibility for actions and outcomes

SKILLS

Improve our own and others' abilities and knowledge

Attachment: DEI goals for 2022 for RPU Board (14284 : Diversity, Equity and Inclusion Action Plan)

Objective 1 – Recruitment and Retention of Diverse Staff

#	Goal / Action Step	Teammate Responsible	Partners	Completion Timeline	Metrics/Measurement
1	Establish a baseline of RPU's internal diversity.	Corporate Services – Peter Hogan	City HR	1 st Qtr 2022	Data compiled and communicated to Directors and Managers.
2	Review and update job descriptions to identify recruitment barriers.	Corporate Services – Peter Hogan	City HR	4 th Qtr 2022	50 percent of job descriptions reviewed and updated to include new standards and targeted advertising plans.
3	Develop outreach program to provide hands-on experience and encourage interest in power and water industry careers.	Public Affairs – Steve Nyhus and Core Services – Scott Nickels	RCTC, RPS, Ctech Public Works, RFD, RPD	4 th Qtr 2022	Outreach program concept developed and establish collaborative relationships with key partners.
4	As part of our retention strategy, incorporate the Leading Now approach in professional development goals for all annual employee performance reviews.	Corporate Services – Peter Hogan	City HR	4 th Qtr 2022	Develop learning objective framework for the program to include specific performance goals targeting development of the employee's Business, Financial and Strategic acumen. <i>Based on a book by Author, Susan Colantuono.</i>

Objective 2 – DEI Professional Development

#	Goal / Action Step	Teammate Responsible	Partners	Completion Timeline	Metrics/Measurement
1	Provide training on accessible materials development and Section 508 compliance for business services, marketing and communication leadership/employees/vendors.	Corporate Services – Peter Hogan	City IT, Community Engagement and Olmsted County	4 th Qtr 2022	Training completed with 95% of participating indicate that they feel more comfortable embedding this in daily work. <i>Refers to the Federal Electronic and information technology Accessibility and Compliance Act.</i>
2	Implicit Bias training for all employees.	Corporate Services – Peter Hogan	City HR	4 th Qtr 2022	Training developed and delivered utility wide to 100% of employees.
3	Incorporate the book "The Leaders Guide to Unconscious Bias" by Fuller, Murphy and Chow, into the Leadership Journey 100 curriculum.	General Manager – Mark Kotschevar	Vision Companies	1 st Qtr 2022	95% of LJ participants indicate that they feel prepared to have crucial conversations about bias.

Objective 3 – Community Connection and Engagement

#	Goal / Action Step	Teammate Responsible	Partners	Completion Timeline	Metrics/Measurement
1	RPU will reinvigorate our new resident Welcome packets and continue to participate in the Welcoming Week initiative.	Customer Relations – Krista Boston	Olmsted County Public Works Community Engagement	4 th Qtr, 2022	Events developed. 100% of new residents received packet. Contents may vary depending on customer demographic.
2	The Customer Experience Mapping project will include focus groups of Rochester residential customers with diverse community partners to provide feedback regarding all aspects of RPU services.	Customer Relations – Krista Boston	Partners identified with input from local community leaders	4 th Qtr, 2022	Project completed and includes focus group input.
3	RPU will advertise POLCO in the Plugged In to help increase registrations and engagement.	Public Affairs – Steve Nyhus And Customer Relations – Krista Boston	Jenna Bowman, Community Engagement	2022	Numbers of POLCO registrations increase 2% each quarter, as a result of RPU marketing.
4	The quarterly RPU customer satisfaction survey will include specific questions using an equitable lens.	Public Affairs – Steve Nyhus and Customer Relations – Krista Boston	Community Engagement and Diversity, Equity and Inclusion	4 th Qtr 2022	DEI focused questions developed and feedback data reviewed.
5	RPU marketing materials and web site inventoried for Section 508 review and revision. <i>Refers to the Federal Electronic and information technology Accessibility and Compliance Act.</i>	Public Affairs – Steve Nyhus and Customer Relations – Krista Boston		4 th Qtr 2022	RPU website, billing/payment app and other media communication materials reviewed.
6	RPU will actively pursue representation on a minimum of two local boards with a focus on issues that may identify gaps in our services.	Public Affairs – Steve Nyhus	Non-profit consortium and other local leaders	4 th Qtr 2022	Two board seats attained.
7	RPU will complete customer segmentation analysis to better understand customer demographics, identify their needs and values.	Customer Relations – Krista Boston and Core Services – Scott Nickels		3 rd Qtr 2022	Community profile completed.

Attachment: DEI goals for 2022 for RPU Board (14284 : Diversity, Equity and Inclusion Action Plan)

8	Increase community outreach efforts explaining the various options to manage their RPU bill, such as budget billing and other available resources.	Customer Relations – Krista Boston		4 th Qtr 2022	85% of customers indicate that they are aware of payment options.
9	Coordinate a campaign promoting the new kiosk at our Service Center which offers another 24/7 payment option for customers.	Customer Relations – Krista Boston		4 th Qtr 2022	Increase self-service payment option by 10%.
10	Targeted outreach efforts to selected customers related to conservation, energy efficiency and other resources in the community that offer weatherization. (Conserve and Save program push)	Customer Relations – Krista Boston		4 th Qtr 2022	Increase participation of lower income households by 50% in the Neighborhood Energy Challenge.

FOR BOARD ACTION

Agenda Item # (ID # 14286)

Meeting Date: 12/21/2021

SUBJECT: RPU Index of Board Policies

PREPARED BY: Christina Bailey

ITEM DESCRIPTION:

UTILITY BOARD ACTION REQUESTED:

ROCHESTER PUBLIC UTILITIES		
INDEX OF BOARD POLICIES		
	REVISION DATE	RESPONSIBLE BOARD COMMITTEE
BOARD		
1. Mission Statement	6/26/2012	Policy
2. Responsibilities and Functions	3/27/2012	Policy
3. Relationship with the Common Council	2/28/2012	Policy
4. Board Organization	3/27/2018	Policy
5. Board Procedures	3/27/2012	Policy
6. Delegation of Authority/Relationship with Management	7/24/2018	Policy
7. Member Attendance at Conferences and Meetings	12/18/2018	Policy
8. Board Member Expenses	12/18/2018	Policy
9. Conflict of Interest	DELETED	N/A
10. Alcohol and Illegal Drugs	DELETED	N/A
11. Worker Safety	3/27/2012	Policy
CUSTOMER		
12. Customer Relations	4/30/2019	Ops & Admin
13. Public Information and Outreach	4/30/2019	Communications
14. Application for Service	7/1/2016	Ops & Admin
15. Electric Utility Line Extension Policy	3/28/2017	Finance
16. Billing, Credit and Collections Policy	9/28/2021	Finance
17. Electric Service Availability	10/29/2019	Ops & Admin
18. Water and Electric Metering	6/26/2018	Ops & Admin
19. Adjustment of Utility Services Billed	6/29/2021	Finance
20. Rates	7/25/2017	Finance
21. Involuntary Disconnection	9/28/2021	Communications
ADMINISTRATIVE		
22. Acquisition and Disposal of Interest in Real Property	12/19/2017	Ops & Admin
23. Electric Utility Cash Reserve Policy	1/28/2020	Finance
24. Water Utility Cash Reserve Policy	1/28/2020	Finance
25. Charitable Contributions	6/25/2019	Communications
26. Utility Compliance	10/24/2017	Communications
27. Contribution in Lieu of Taxes	6/29/1999	Finance
28. Joint-Use of Infrastructure and Land Rights	3/30/2021	Ops & Admin
29. Customer Data Policy	10/9/2014	Communications
30. Life Support	9/24/2019	Communications
31. Electric Utility Undergrounding Policy	9/29/2020	Ops & Admin
Red - Currently being worked on		
Yellow - Will be scheduled for revision		
Marked for deletion		

FOR BOARD ACTION

Agenda Item # (ID # 14290)

Meeting Date: 12/21/2021

SUBJECT: Division Reports and Metrics - December 2021

PREPARED BY: Christina Bailey

ITEM DESCRIPTION:

UTILITY BOARD ACTION REQUESTED:

Division Reports & Metrics December 2021

**CORE SERVICES
SAFETY, COMPLIANCE & PUBLIC AFFAIRS
POWER RESOURCES
CUSTOMER RELATIONS
CORPORATE SERVICES
FINANCIAL REPORTS**

Division Reports & Metrics December 2021

CORE SERVICES

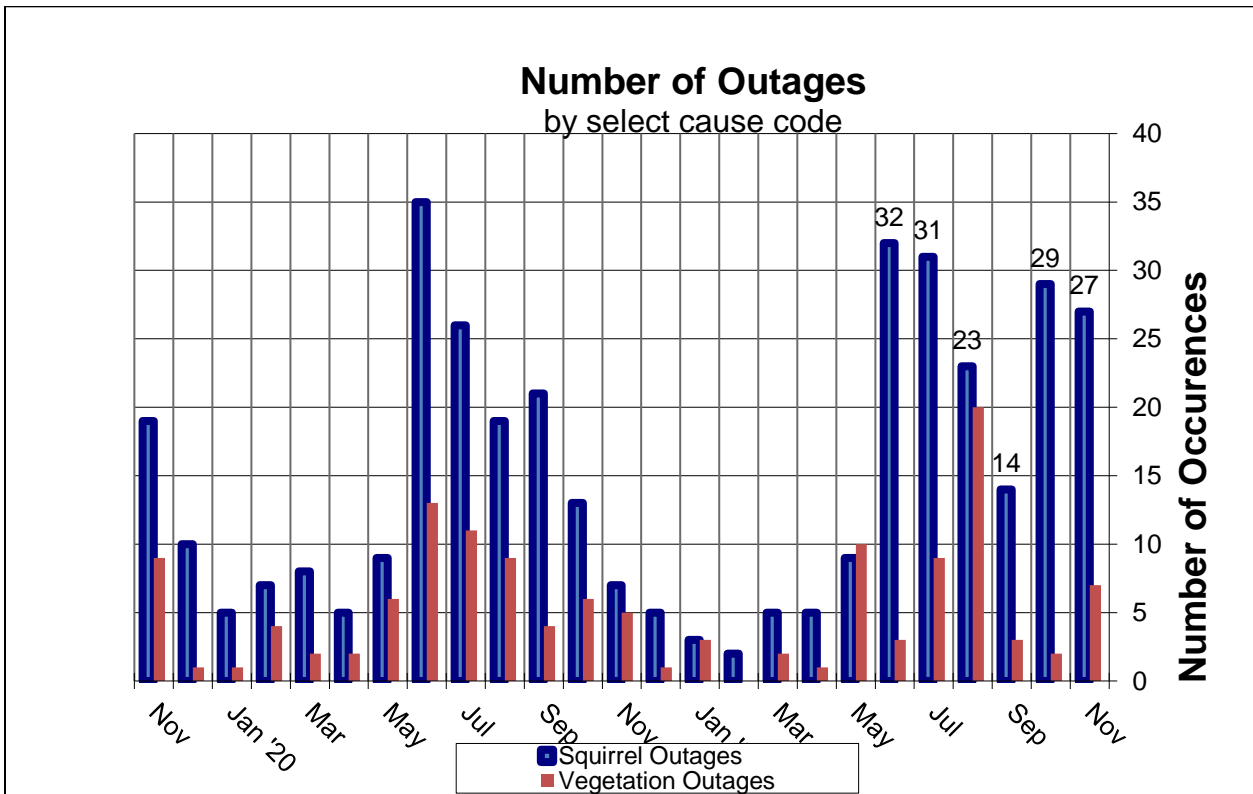
Electric Utility:

1. Electric Outage Calculations for the month and year to date (November 2021 Data)

- | | |
|--|---|
| a. Reliability = 99.99613% | Year-to-date Reliability = 99.99197% |
| b. 3,540 Customers affected by Outages | Year-to-date Customers affected by Outages = 44,443 |
| c. SAIDI = 1.67 min | Year-to-date SAIDI = 3.54 min |
| d. CAIDI = 26.89 min | Year-to-date CAIDI = 45.99 min |

2. Electric Utility Operations – T&D, Engineering, System Ops, GIS, Tech Services:

- Grading activities have begun at the Marion Road substation site. Specific long lead time equipment has been released for bid. Substation site usage permit has been approved.
- Integrations of SCADA breaker status into the Responder Outage Management System has been completed.
- Reliability statistics were improved due to fewer storm and wind events in November. Animal outages continue to be the highest outage cause.



Attachment: Division Reports December 2021 (14290 : Division Reports and Metrics - December 2021)

Summary of individual electrical outages (greater than 200 customers– November 2021 data)

# Customers	Date	Duration	Cause
2,101	11/4/21	19m	Animals – Squirrel
970	11/3/21	1h 23m	Animals – Squirrel
681	11/3/21	54m	Vegetation

Summary of aggregated incident types (greater than 200 customers – November 2021 data)

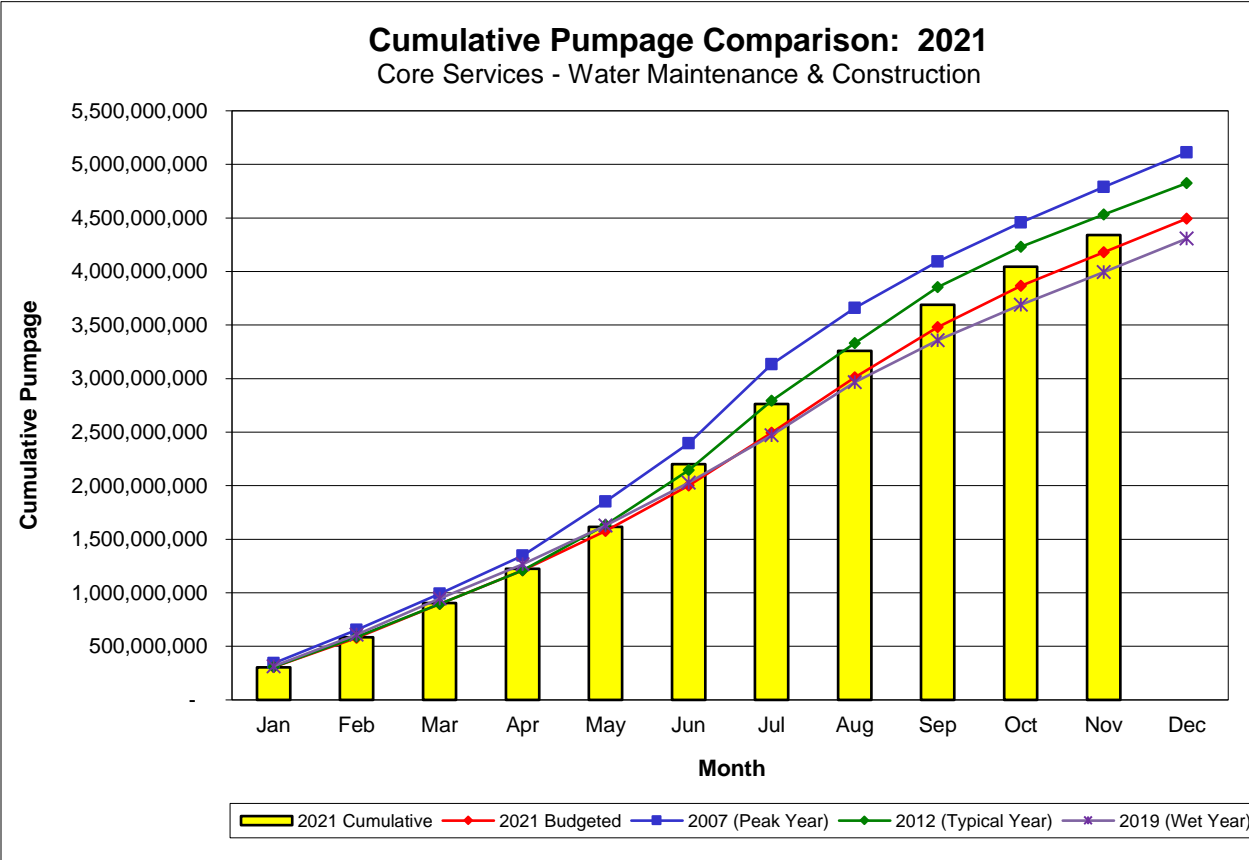
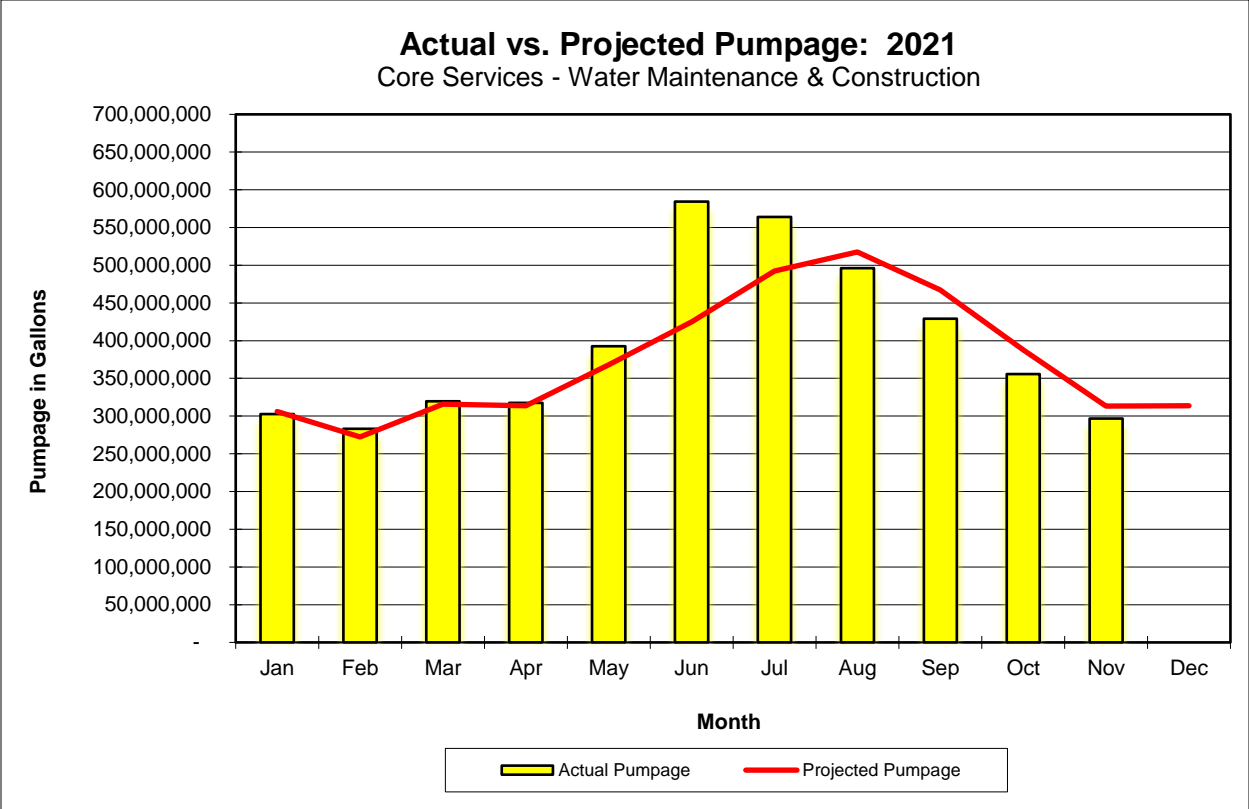
# Customers	Total # of Incidents	Cause
3,461	27	Animals
725	29	Vegetation

Water Utility:

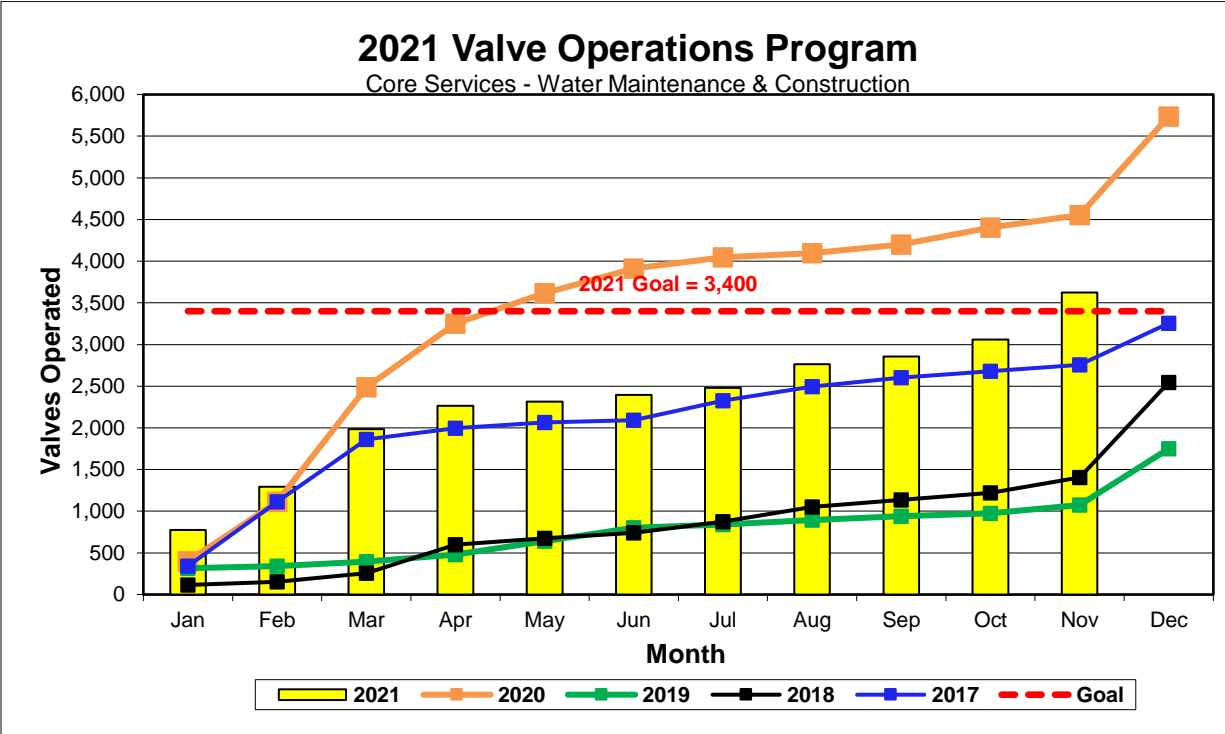
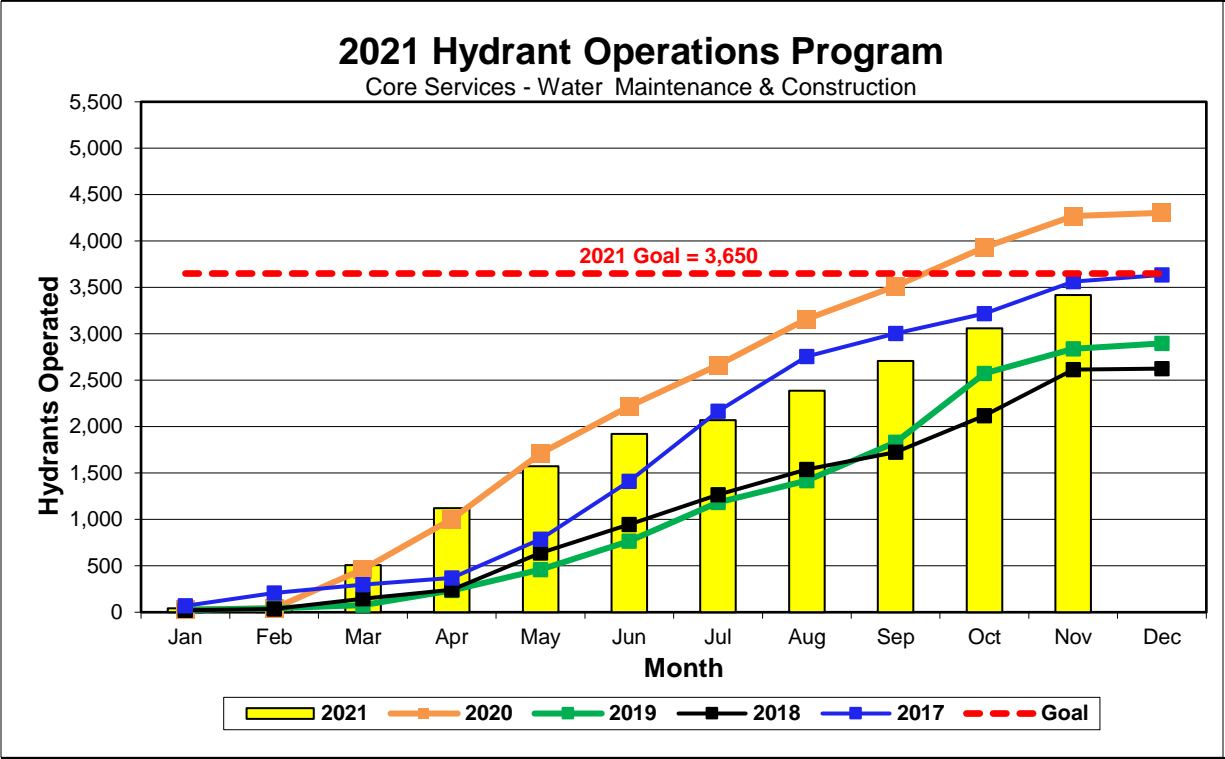
1. Water Outage Calculations for the month and year to date (November 2021 data):

- a. Reliability = 99.99977564% Year-to-date Reliability = 99.99880840%
 - b. 99 Customers Affected by Outages Year-to-date Customers Affected by Outages = 1,587
 - c. 66.7 Customer Outage Hours Year-to-date Customer Outage Hours = 3,942.1
 - d. SAIDI = 0.1 Year-to-date SAIDI = 5.7
 - e. CAIDI = 40.4 Year-to-date CAIDI = 149.0
- Performed 967 Gopher State water utility locates during the month for a total of 15,955 for the year.
 - Repaired water distribution system failures or maintenance at the following locations during the month. :
 - 4411 22 Ave NE – (repair valve) – 11/17
 - 331 27 St NE – (main break) – 11/20
 - 1533 4th Ave SW – (main break) – 11/26
 - RPU personnel received 75 inquiries during the month by phone, email, and in person related to questions about letters that customers received regarding how to accomplish backflow testing and backflow prevention.

Attachment: Division Reports December 2021 (14290 : Division Reports and Metrics - December 2021)



Attachment: Division Reports December 2021 (14290 : Division Reports and Metrics - December 2021)



Attachment: Division Reports December 2021 (14290 : Division Reports and Metrics - December 2021)

GIS/Property Rights

- Hydro line LIDAR flight completed utilizing drone technology. Deliverables include a 3D point cloud of the corridor, vegetation identification and clearance issues.

SAFETY / COMPLIANCE & PUBLIC AFFAIRS December 2021


1. Safety

TRAINING	Total Required Enrollments	Completions as of 11/30/2021	Percent Complete
November 2021	767	767	100%
Calendar Year to 11/30/2021	7332	7332	100%

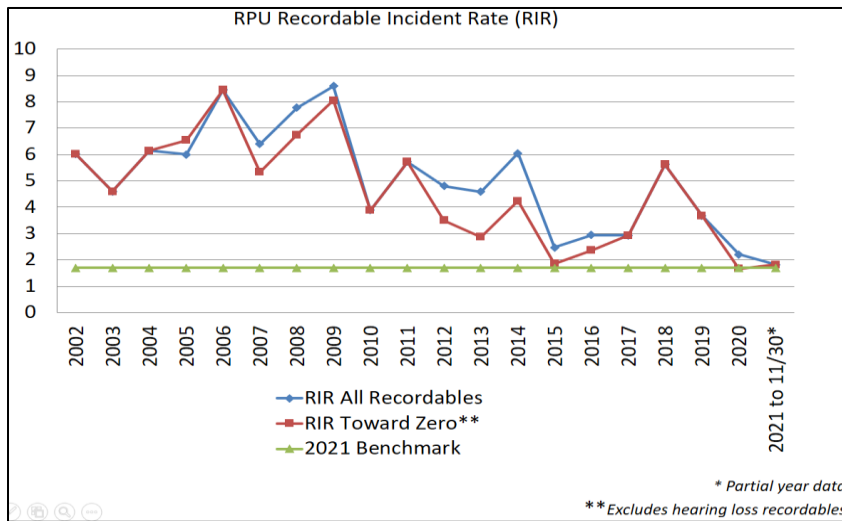
SAFETY TEAMS	Total Members	Members Attending	Percent Attending
November 2021	26	22	84.6%
Calendar Year to 11/30/2021	371	306	82.5%

INCIDENTS	Reports Submitted	OSHA Cases ¹	RPU RIR ²	BLS RIR ³
November 2021	1	0	--	--
Calendar Year to 11/30/2021	23	3	1.81	1.7

¹ Deemed to meet OSHA criteria as a recordable case by RPU Safety Manager, subject to change
² Recordable Incident Rate – Number of OSHA Recordable Cases per 100 employees.
³ Bureau of Labor Statistics nonfatal illnesses and injuries in the utility sector



22 of RPU's 24 departments are recordable injury free in 2021
 201 of RPU's 204 employees are recordable injury free in 2021



2021 OSHA Recordable Case Detail				
Work Area	Incident Date	Description	Primary Reason it's a Recordable	Corrective Action
T&D	2/8/2021	Slipped on ice in parking lot striking head and shoulder (R) on pavement	Restricted Work	Reviewed salting/sanding procedures
Water	3/1/2021	Possible knee (L) injury due to slip on ice	Days Away	Encouraged use of better slip resistant footwear
T&D	10/14/2021	Bumped elbow (L) on truck mounted vice resulting in infection	Restricted Work	N/A

SAFETY INITIATIVES

1. Implemented weeklong email campaign using materials created by MnDOT regarding reducing speed while driving
2. Ongoing work to enhance safety teams and related documentation
3. Safety manager participated in virtual conference to learn to more effectively use the City's learning management system.

2. Environmental & Regulatory Affairs

- On November 15th RPU started using the services of The Compliance Engine (TCE) for backflow testing compliance. The MN Plumbing Code requires all backflow assemblies to be tested annually and it is the public water supplier's responsibility to ensure these are being completed. TCE is the same company that the Rochester Fire Department has used for 10 years to ensure fire sprinkler systems are inspected annually.
- On November 18th Todd Osweiler presented at the MN Ground Water Association conference focusing on RPU's water sustainability efforts in Rochester.

3. Communications

- RPU teammates are working with the current designer of RPU Plugged In to transition the design and printing of the newsletter to new vendors. This change came due to the current ad agency only focusing on two other customer segments moving forward.
- We met with the new Digital Communications Coordinator for the city, Liz Stay. We shared what RPU does for communications and how we can work with Liz in her new role. Liz used to work with RPU communications on news stories when she was a reporter for KIMT.
- We are continuing to collect photos, time lapse video, and drone video of the 10MW

Attachment: Division Reports December 2021 (14290 : Division Reports and Metrics - December 2021)

solar project for future promotion and education about the solar project.

Page Summary Last 28 days +

Export Data

Results from Nov 16, 2021 - Dec 13, 2021

Note: Does not include today's data. Insights activity is reported in the Pacific time zone. Ads activity is reported in the time zone of your ad account.

Organic Paid

Actions on Page November 16 - December 13 1 Total Actions on Page ▲0% 	Page Views November 16 - December 13 127 Total Page Views ▼45% 	Page Likes November 16 - December 13 12 Page Likes ▼28%
Post Reach November 16 - December 13 5,939 People Reached ▲202% 	Story Reach November 16 - December 13 Get Story Insights See stats on how your Page's recent stories have performed. Learn more	Recommendations November 16 - December 13 We have insufficient data to show for the selected time period.
Post Engagement November 16 - December 13 261 Post engagement ▼24% 	Videos November 16 - December 13 58 3-Second Video Views ▼6% 	Page Followers November 16 - December 13 11 Page Followers ▼31%

Account home
RPU Alerts @rpualerts

28 day summary with change over previous period

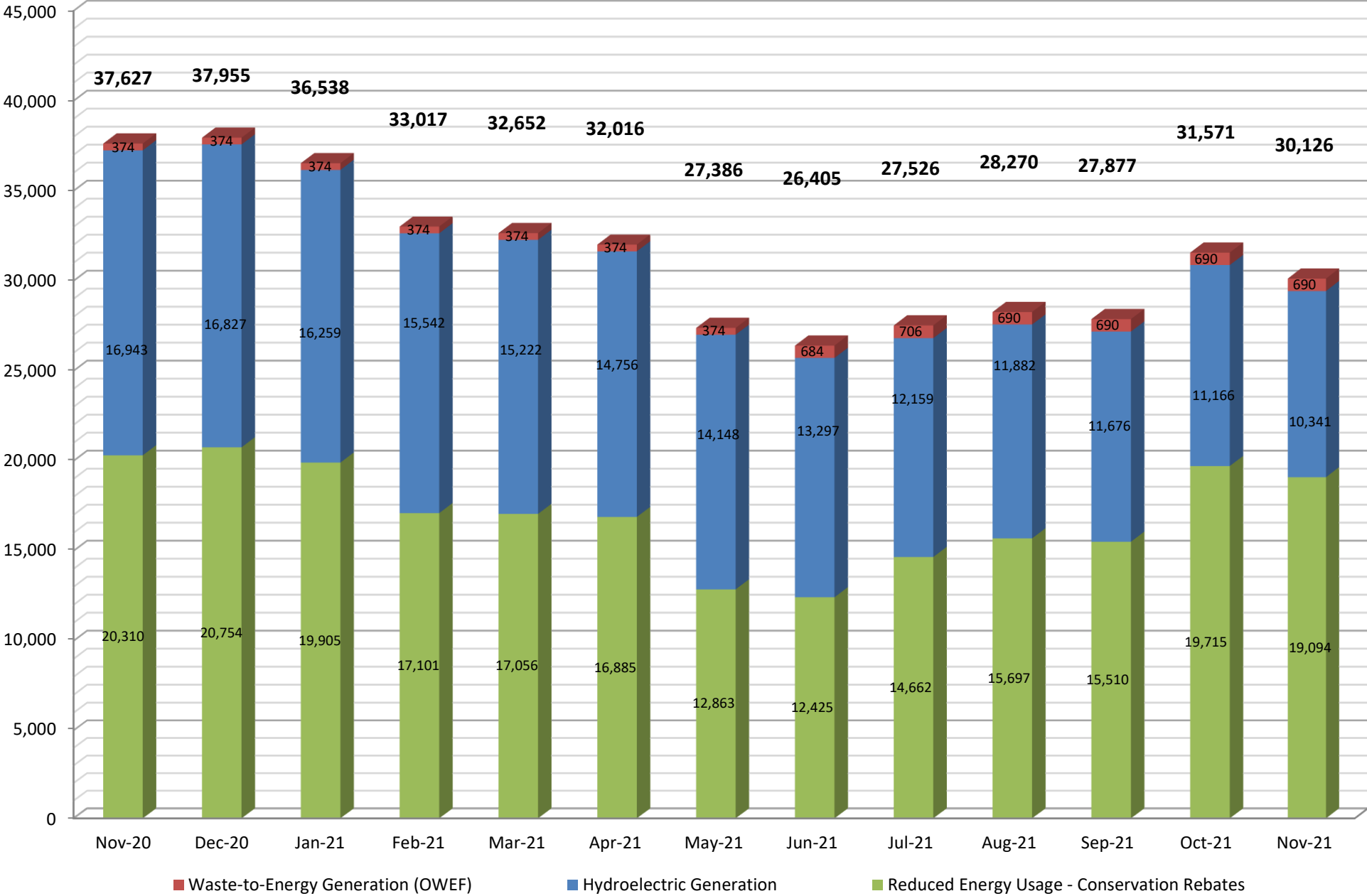
Tweets 14 ▼26.3%	Tweet impressions 6,640 ▼12.2%	Profile visits 341 ▼36.6%	Mentions 4 ▼82.6%	Followers 1,148 ↑10

Attachment: Division Reports December 2021 (14290 : Division Reports and Metrics - December 2021)

RPU Environmental Stewardship Metric

Tons CO2 Saved

12 Month Rolling Sum



Attachment: Division Reports December 2021 (14290 : Division Reports and Metrics - December 2021)

POWER RESOURCES MANAGEMENT

DECEMBER 2021

Portfolio Optimization

1. In November, RPU continued to bid GT2 and WES into the MISO day-ahead and real-time markets. GT2 and WES are also capable of participating in the ancillary services market. WES was in an outage the first week of the month for annual maintenance. GT1 is presently in a long outage for a major overhaul.
 - a. Ancillary Service Market – Supplemental Reserves
 - i. Cleared DA
 1. GT2 – 30 days
 2. WES – 21 days
 - ii. Deployment YTD
 1. GT2 – 1
 2. WES – 1
 - b. Dispatched by MISO
 - i. GT1 – 0 times YTD 20
 - ii. GT2 – 9 times YTD 118
 - iii. WES – 15 times YTD 162
 - c. Hours of Operation
 - i. GT1 – 0 hours YTD 131 hours
 - ii. GT2 – 63 hours YTD 874 hours
 - iii. WES – 127 hours YTD 1,490 hours
 - d. Electricity Generated
 - i. GT1 – 0 MWh YTD 2,884 MWh
 - ii. GT2 – 1,949 MWh YTD 30,276 MWh
 - iii. WES – 3,239 MWh YTD 50,047 MWh
 - e. Forced Outage
 - i. GT1 – 0 hours YTD 207 hours
 - ii. GT2 – 0 hours YTD 38 hours
 - iii. WES – 0 hours YTD 168 hours
2. MISO market Real Time Price averaged \$25.15/MWh and Day Ahead Price averaged \$23.19/MWh.

CUSTOMER RELATIONS

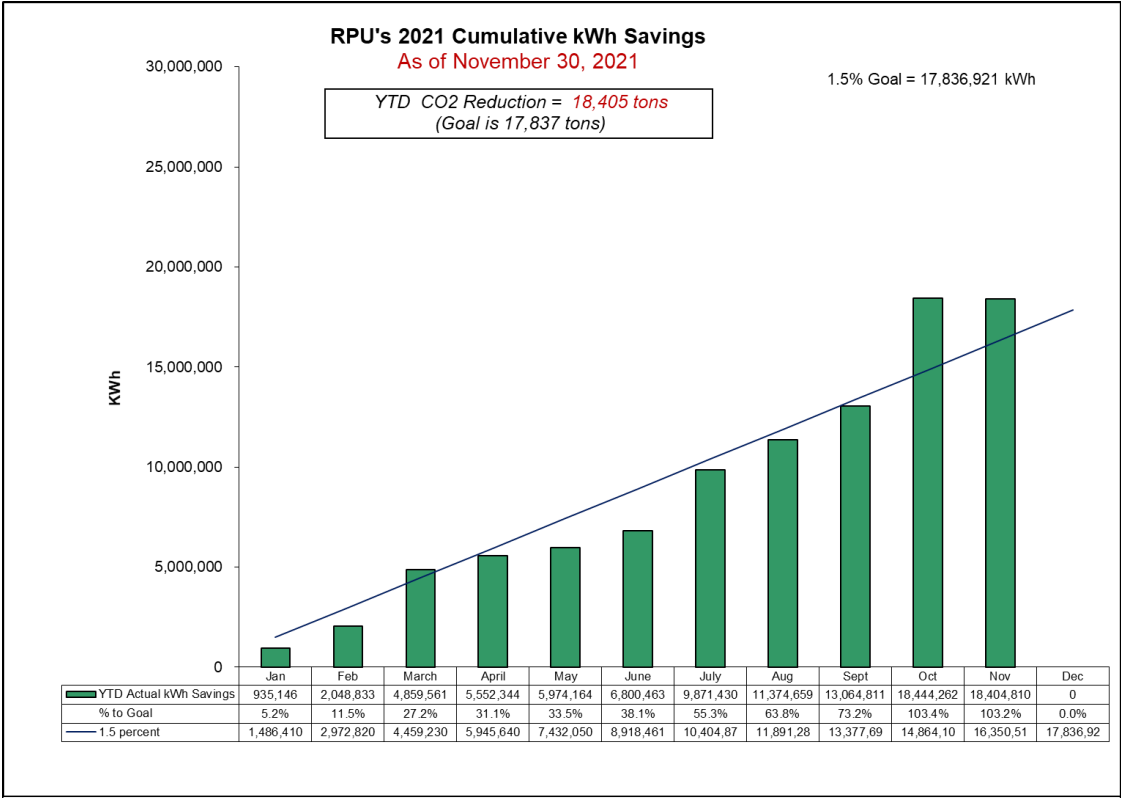
(Contact Center and Marketing, Commercial and Residential)

Stakeholder Engagement, Forums, and Meetings

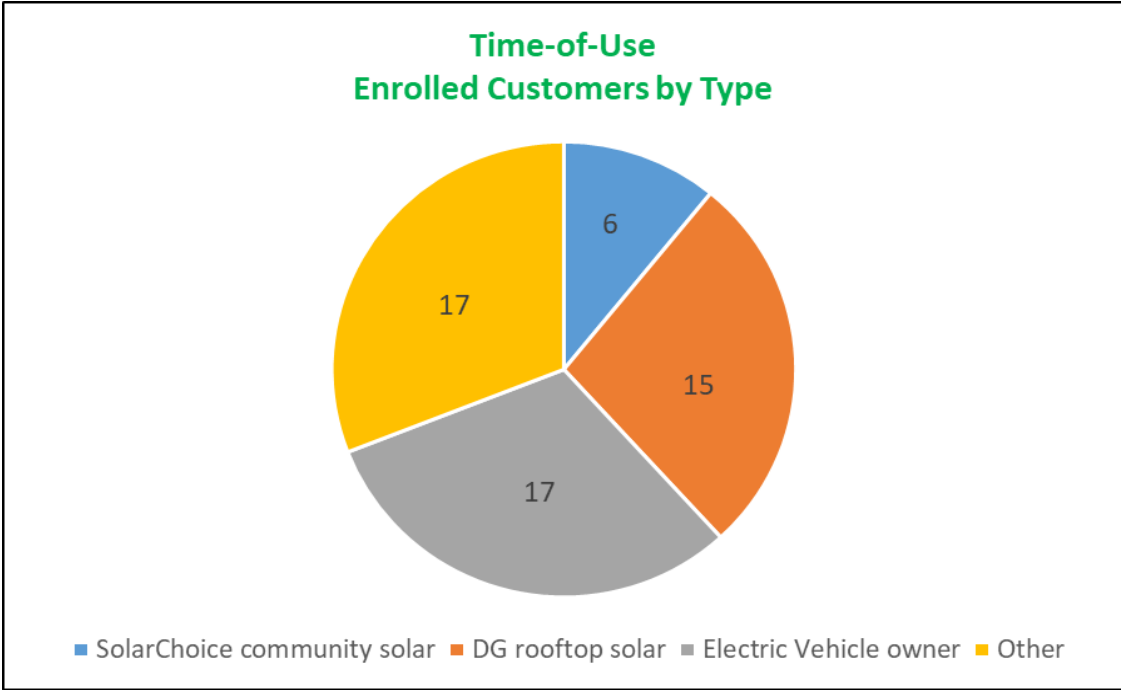
1. On December 2, the marketing team attended the 2021 Economic Summit giving us insight into the economic trends impacting local businesses, presented by the Rochester Area Chamber of Commerce.
2. On December 13, marketing participated in the Solar MN meeting. The session discussed real estate appraisals for buildings with solar, the details of solar sheep grazing, along with other solar updates.
3. Marketing participated in the final Solar for Schools stakeholder engagement session on December 14. The Department of Commerce presented program adjustments their staff has made following the previous engagement sessions.

Opportunities for Customers

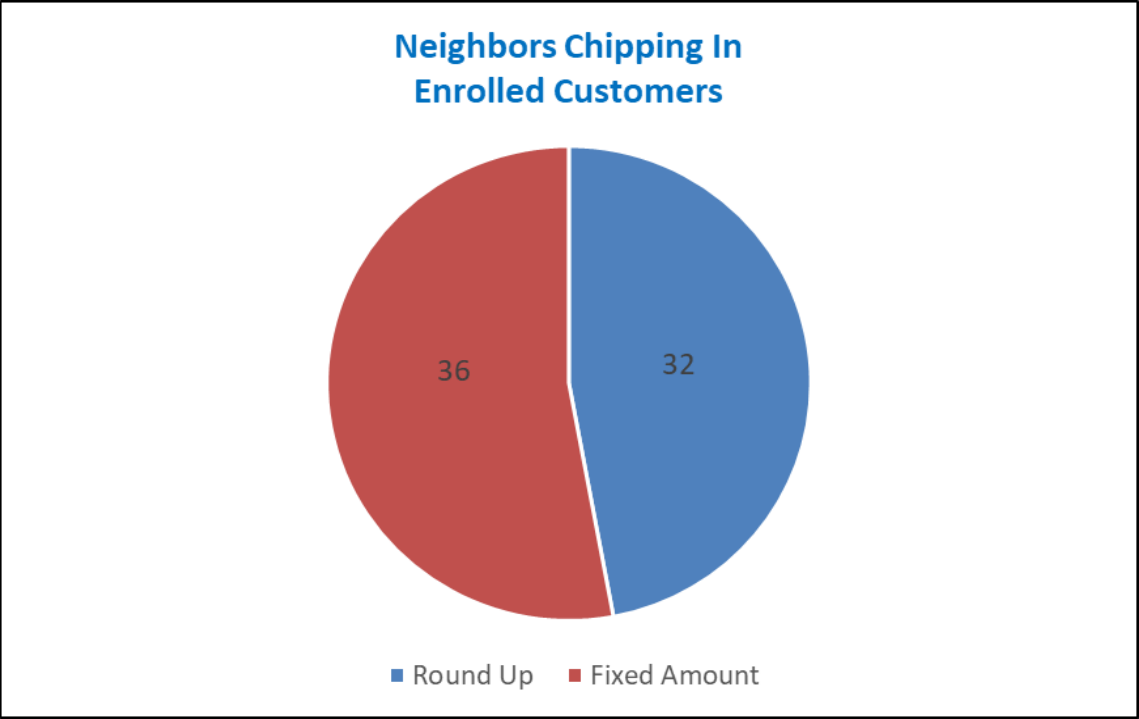
1. Community Development and RPU have collaborated to offer assistance with analyzing energy use and identifying energy efficiency upgrades eligible for grant applications through RPU's existing Partnering in Energy Solutions program. The purpose of the grant is to support small businesses or property owners with installing energy efficiency project(s).
2. The Cayenta upgrade went live on Monday, December 6. This was a success because of the hard work and collaborative effort between various departments within RPU, in conjunction with Cayenta resources.
3. Marketing participated in a discussion on fan array technology hosted by TMS Johnson and Greenheck on December 7. An example energy saving calculation was presented to the group as part of RPU's CIP customer rebate program.



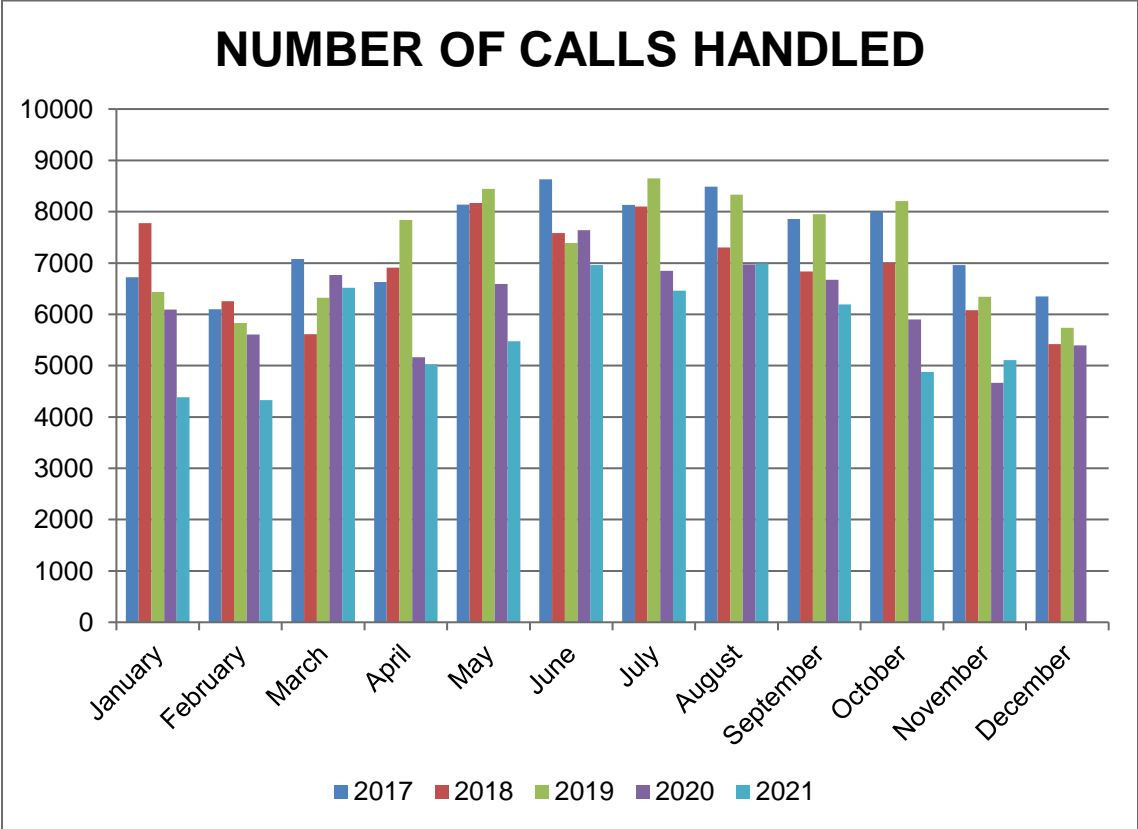
- ✚ Avoided kW: 2,340 kW
- ✚ Cost of Avoided kW: \$852/kW



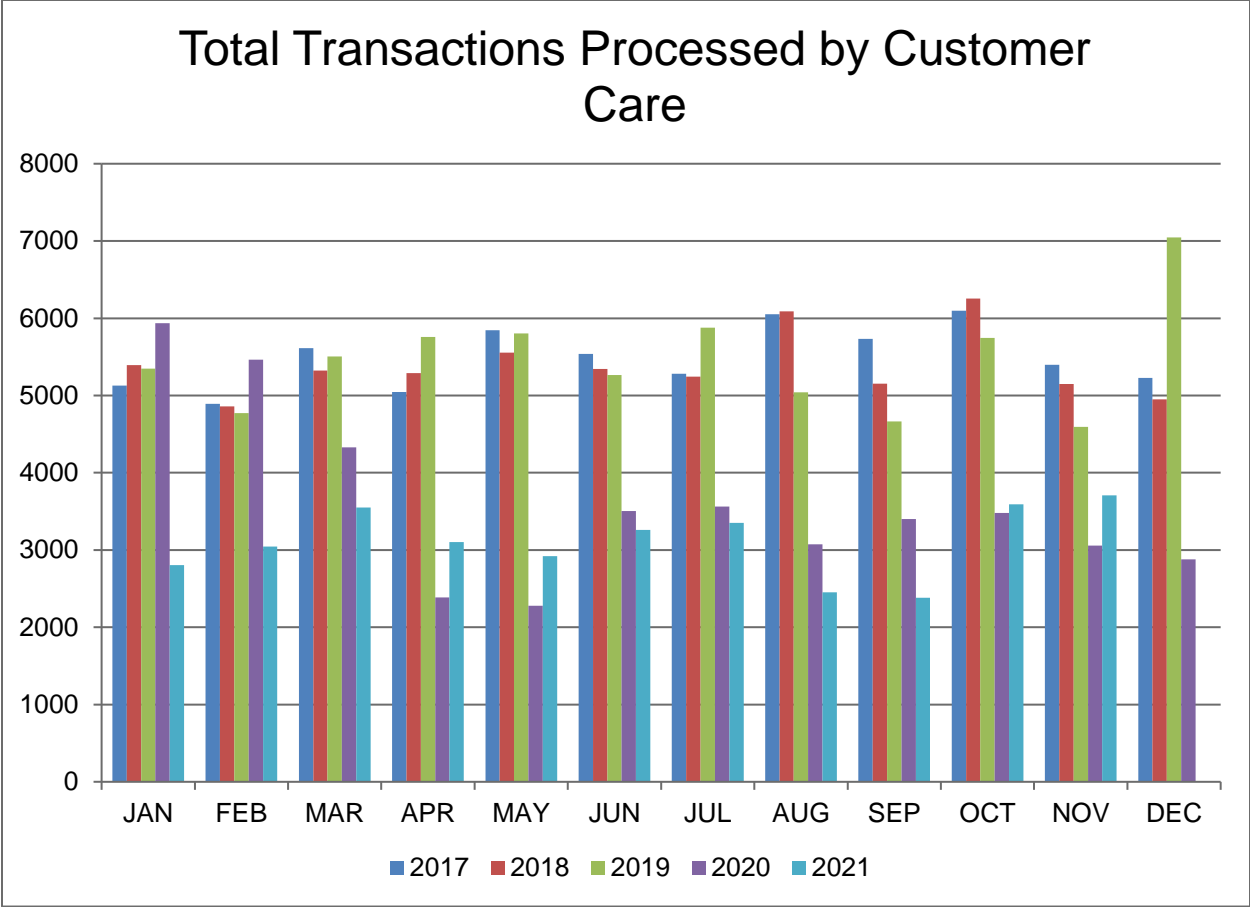
✚ Total Customers Enrolled: 55



✚ Total Customers Enrolled: 68



✚ Total Number of Calls: 5,107 (graphed above)



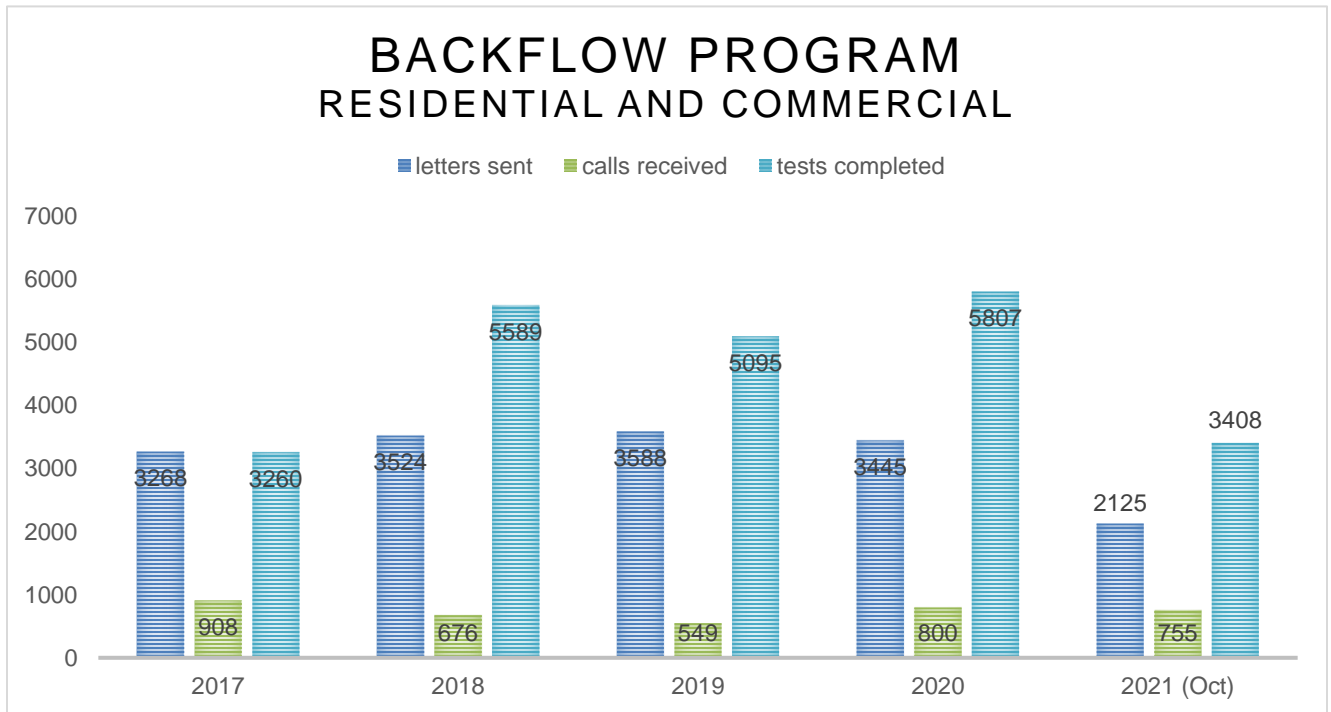
- ✚ Total Number in Dollars Processed by Representatives: \$1,554,639 (graphed above)
- ✚ Total Number of Transactions Processed by Representatives: 3,709

Attachment: Division Reports December 2021 (14290 : Division Reports and Metrics - December 2021)

CORPORATE SERVICES

1. Business Services:

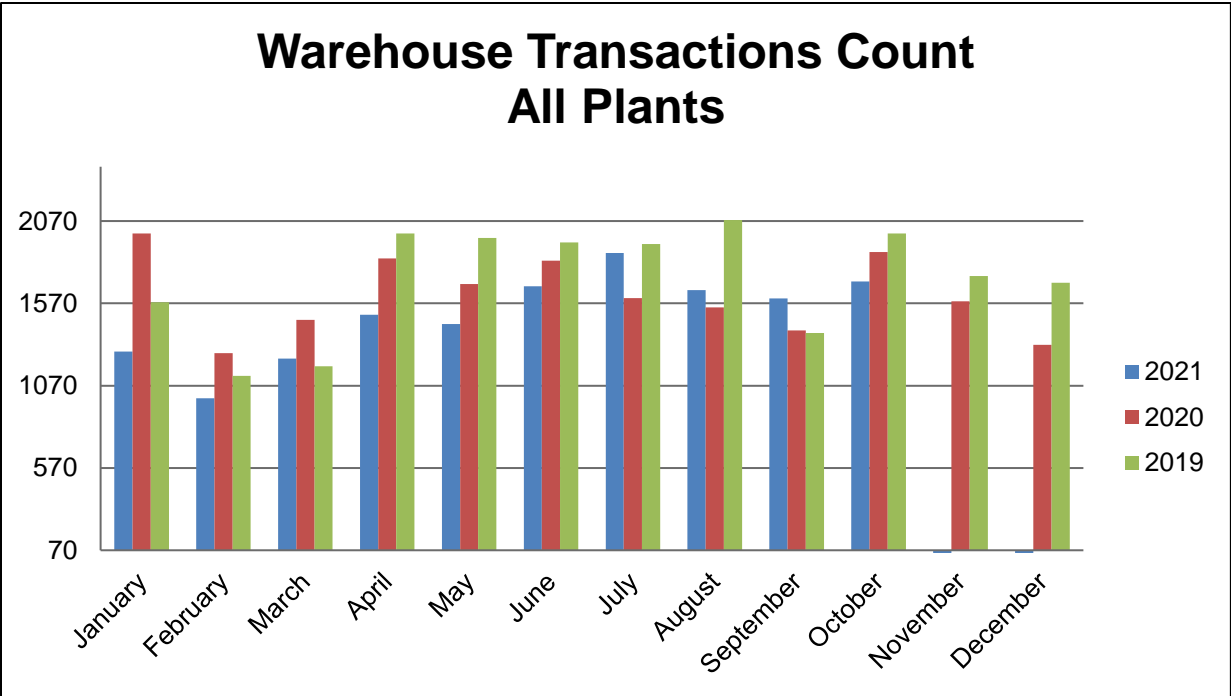
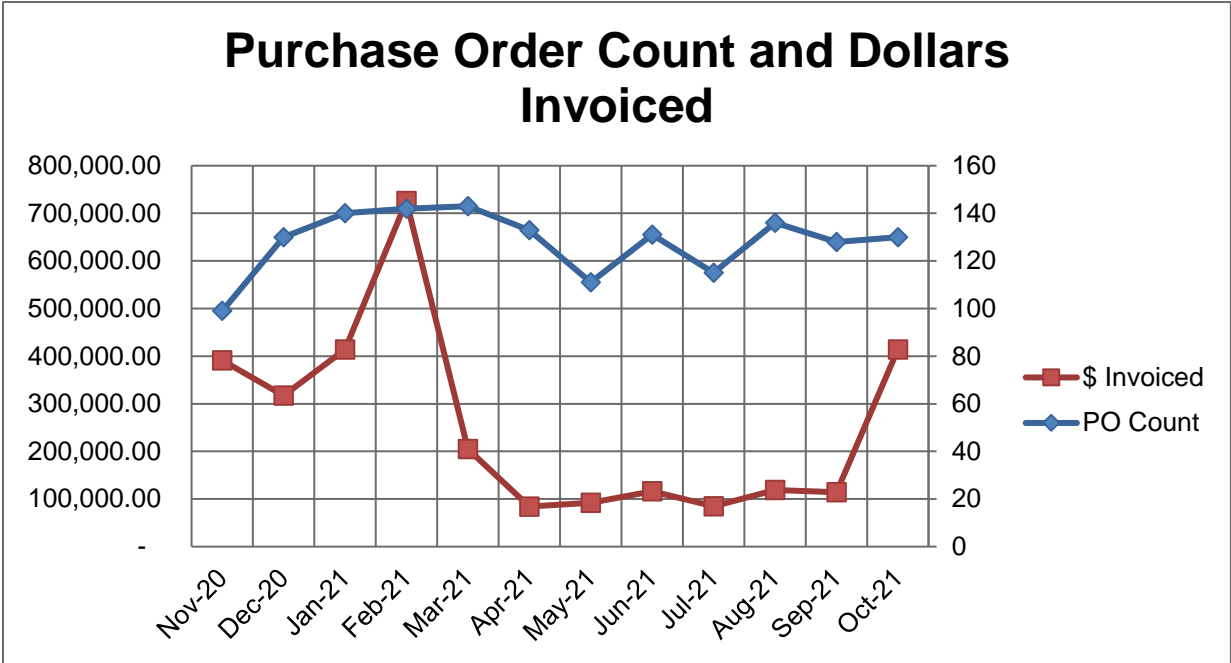
- Payroll/HR – Coordinated the onboarding of one full time employee and offboarding of three full time and three seasonal employees.
- Administrative – RPU employees participated in the City’s United Way online campaign and hosted a virtual auction raising an additional \$700.
- Administrative – Coordinated our annual “Share the Warmth” outerwear drive, which resulted in donation of 18 winter coats for the Salvation Army.
- Administrative Support – Worked with a vendor to implement a new Backflow prevention monitoring software which went live November 15, 2021.
- Administrative Support - The Business Services team handled 2,769 mailing pieces.



2. Purchasing and Materials Management:

3. Completed the search for the Warehouse Operations Attendant which was open due to an internal promotion in September.
4. Invitation for Bids issued for Power Transformers for the Marion Road Substation.
5. Invitation for Bids issued for Power Line Tree Clearance.

Attachment: Division Reports December 2021 (14290 : Division Reports and Metrics - December 2021)



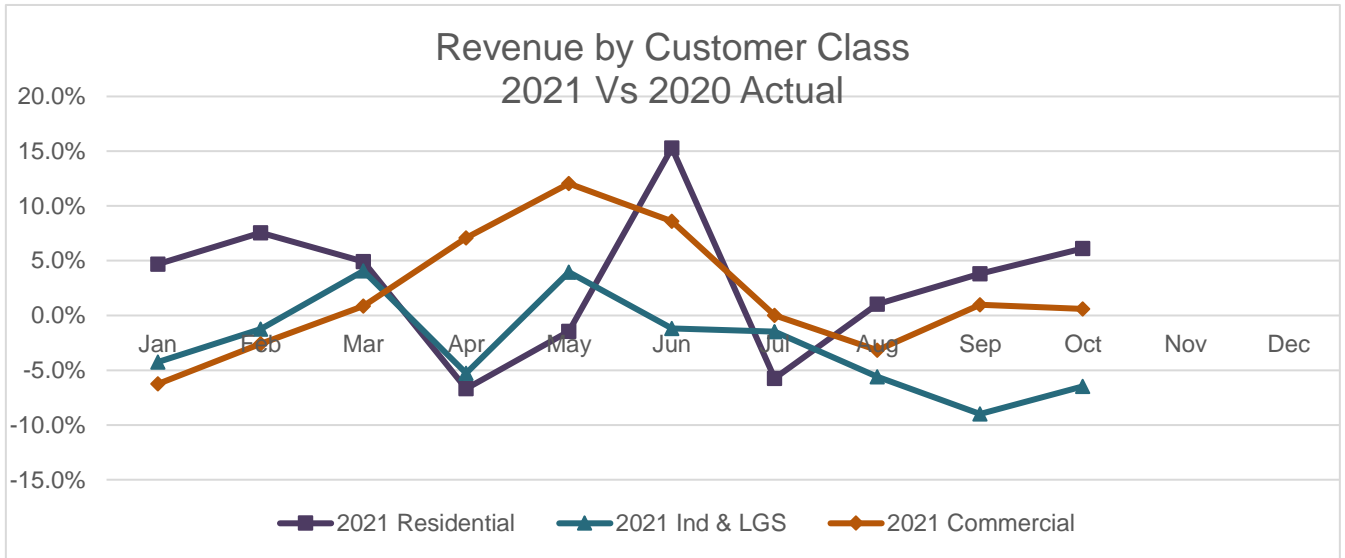
6. Finance and Accounting:

General

- The RPU recommended budget was reviewed by the City Council during a study session on November 8, 2021. The RPU Board approved the recommended operating budget, rate adjustments, capital and multi-year capital budgets during the October 26, 2021 Board meeting. The City Council is anticipated to approve the RPU budget on December 6, 2021.

Attachment: Division Reports December 2021 (14290 : Division Reports and Metrics - December 2021)

- Covid19 Financial Impacts – As part of our 2021 Electric Utility budget process, sales volumes and gross margin were adjusted down. The 2021 budget anticipates a slow recovery during 2021. The Electric Utility gross margin for September 2021 is under budget by \$142,948 or (2.8%). This is \$298,752 or 6.5% over October 2020 actual gross margin. Included in the gross margin total is Wholesale sales gross margin, which is \$431,615 or 14.1% above budget for October 2021. The Wholesale increase was due to warmer weather and other generation in the region having scheduled outages for maintenance.



- Customer Billing/Accounting – Disconnection of service for nonpayment of accounts was suspended effective September 30, 2021 for residential customers.
- Accounts Receivable – Past due account balances have increased from \$1,348,197 at the end of February 2020, before the pandemic, to \$2,787,809 at the end of October 2021. Of this amount, \$1,665,741 is due from residential customers and \$1,122,068 is due from commercial customers. This is an increase from the end of September for commercial customers of \$226,912 and a reduction of \$22,438 for residential customers. The reduction in residential customer balances is partially due to the prepayment of energy assistance during October.

Description	Residential			Commercial (Non Residential)		
	02/29/2020	10/31/2021	Incr (Decr)	02/29/2020	10/31/2021	Incr (Decr)
% Current	92.0%	73.2%	-18.8%	94.6%	82.4%	-12.2%
% Past Due	17.5%	26.8%	9.3%	5.8%	17.6%	11.8%
Amount Past Due	\$ 968,491	\$ 1,665,741	\$ 697,250	\$ 379,705	\$ 1,122,068	\$ 742,363
# Customers Past Due	6,349	5,568	(781)	385	412	27
Average Balance Past Due	\$ 153	\$ 299	\$ 147	\$ 986	\$ 2,723	\$ 1,737
# Customers > \$1,500 Past Due	17	201	184	38	66	28
# Customers > \$5,000 Past Due	-	11	11	13	30	17

Attachment: Division Reports December 2021 (14290 : Division Reports and Metrics - December 2021)

- Payment Agreements – As of November 10, 2021, we have 546 payment arrangements in good standing. Current payment agreements represent \$681,005 of the total past due balance of \$2,787,809.
- RPU will continue to reach out to customers to get them connected to assistance that they may be qualified for and to make payment agreements.

7. Information Technology:

General

- The Cayenta software upgrade is scheduled for December. This project is currently on time.
- During November, the Operations and IT team participated in a nationwide IT Cyber incident response exercise called GridEx. Drills of this type are an important part of our preparedness.

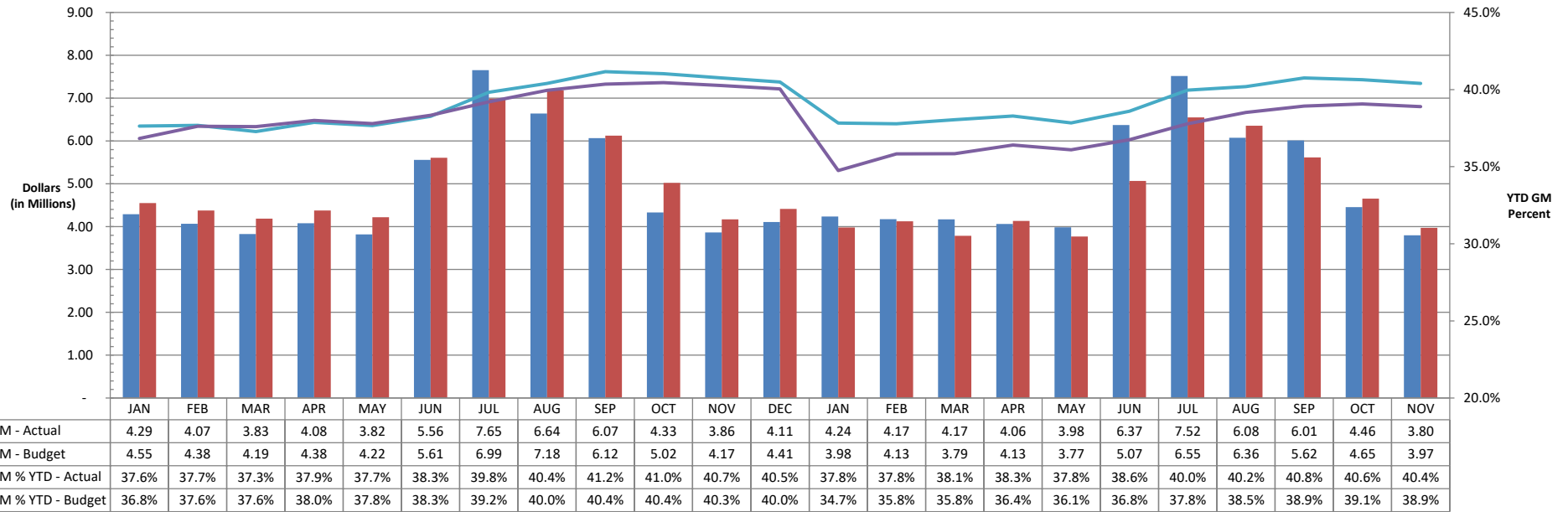
8. Financial Results:

Note: Budget numbers are compared to the approved 2021 budget and have been adjusted for 2020 approved project budgets carried over to 2021. The current month favorable variance in Electric Utility Change in Net Position is due to the recognition of \$5.096M distribution that was authorized during October. This distribution will be received in two installments during 2022.

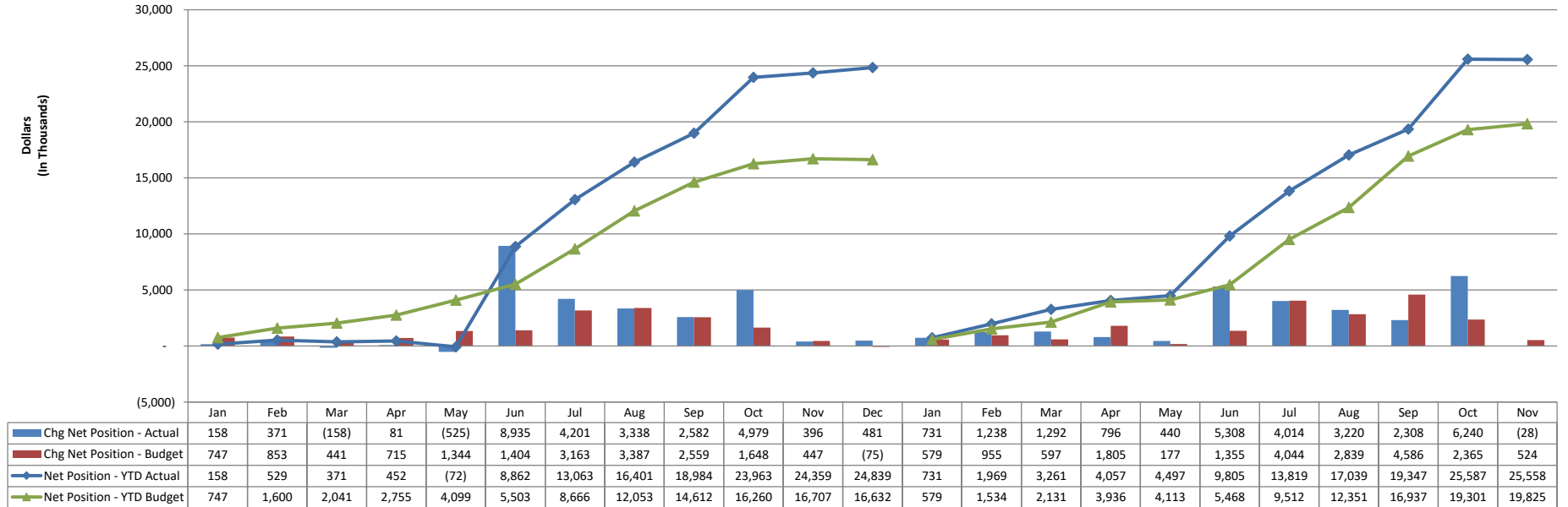
Note: Includes \$5.096M SMMPA distribution recognized in October 2021

(In Thousands)	Current Month			Year to Date		
	Actual	Budget	Variance	Actual	Budget	Variance
Revenue - Electric	\$ 12,955	\$ 12,423	\$ 532	\$ 137,263	\$ 129,907	\$ 7,356
Revenue - Water	902	934	(32)	9,451	9,309	142
Change in Net Position - Electric	6,240	2,365	3,875	25,587	19,301	6,286
Change in Net Position - Water	(91)	207	(298)	1,305	1,313	(8)

2020 - 2021 Retail Gross Margin - Electric Utility

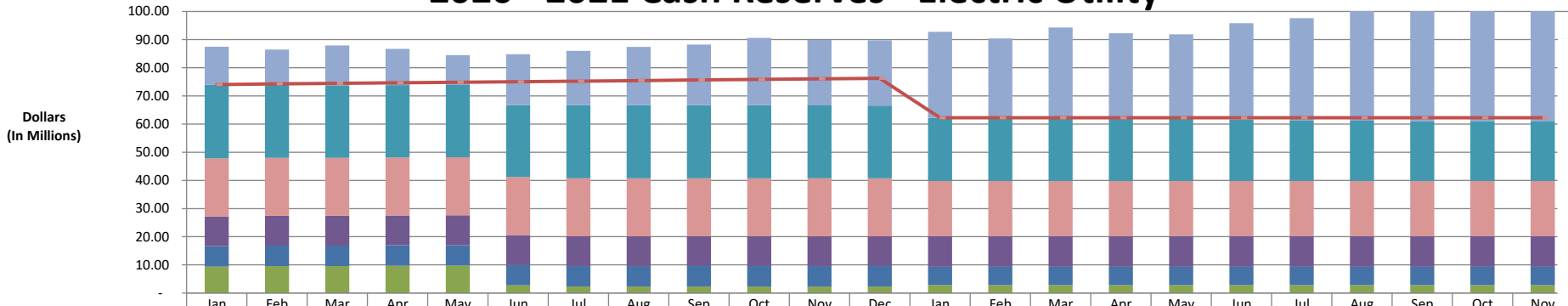


2020 - 2021 Change in Net Position - Electric Utility



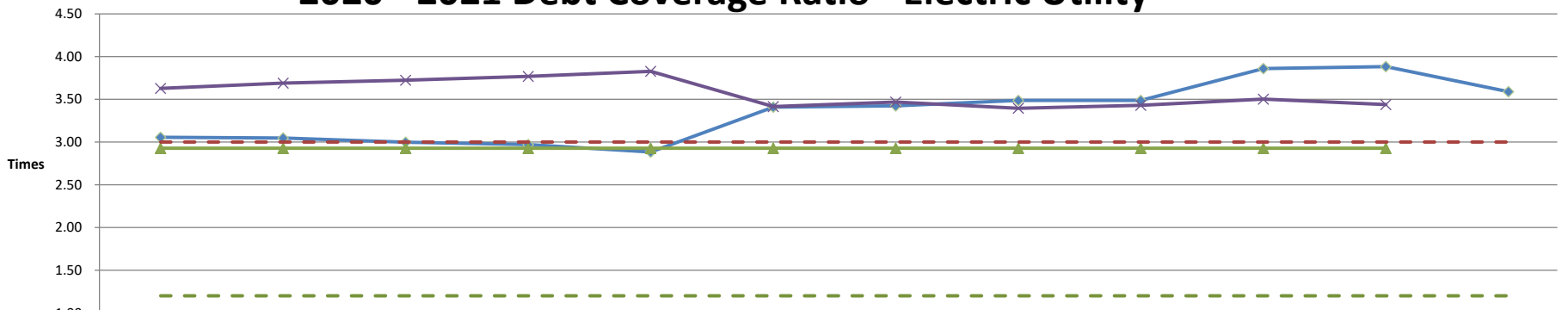
Attachment: Division Reports December 2021 (14290 : Division Reports and Metrics - December 2021)

2020 - 2021 Cash Reserves - Electric Utility



	Jan	Feb	Mar	Apr	May	Jun	Jul	Aug	Sep	Oct	Nov	Dec	Jan	Feb	Mar	Apr	May	Jun	Jul	Aug	Sep	Oct	Nov
Unreserved Cash	13.41	12.18	14.16	12.86	10.59	18.00	19.23	20.65	21.54	23.93	23.26	23.17	30.51	28.19	32.36	30.29	29.90	34.27	36.24	40.92	42.66	44.45	43.56
Capital & Major Maint	26.23	26.23	25.73	25.71	25.69	25.58	26.04	26.02	25.96	25.95	25.91	25.85	22.45	22.42	22.15	22.17	22.17	21.76	21.59	21.40	21.30	21.30	21.08
Working Funds	20.59	20.59	20.59	20.59	20.59	20.59	20.59	20.59	20.59	20.59	20.59	20.59	19.54	19.54	19.54	19.54	19.54	19.54	19.54	19.54	19.54	19.54	19.54
Contingency	10.58	10.58	10.58	10.58	10.58	10.58	10.58	10.58	10.58	10.58	10.58	10.58	10.94	10.94	10.94	10.94	10.94	10.94	10.94	10.94	10.94	10.94	10.94
Clean Air Rider	7.26	7.26	7.26	7.26	7.26	7.26	7.26	7.26	7.26	7.26	7.26	7.26	6.53	6.53	6.53	6.53	6.53	6.53	6.53	6.53	6.53	6.53	6.53
Spl Cap & Maj Maint	9.39	9.59	9.60	9.70	9.79	2.77	2.30	2.30	2.30	2.30	2.30	2.30	2.80	2.80	2.80	2.80	2.80	2.80	2.80	2.80	2.80	2.80	2.80
Total (Excluding Debt Service)	87.47	86.43	87.92	86.71	84.50	84.79	86.00	87.40	88.24	90.62	89.90	89.75	92.77	90.42	94.32	92.27	91.88	95.84	97.65	102.14	103.77	105.56	104.41
Min Reserve (Policy - Ex Debt Service)	74.06	74.26	74.46	74.66	74.86	75.06	75.26	75.46	75.66	75.86	76.06	76.26	62.26	62.26	62.26	62.26	62.26	62.26	62.26	62.26	62.26	62.26	62.26

2020 - 2021 Debt Coverage Ratio - Electric Utility

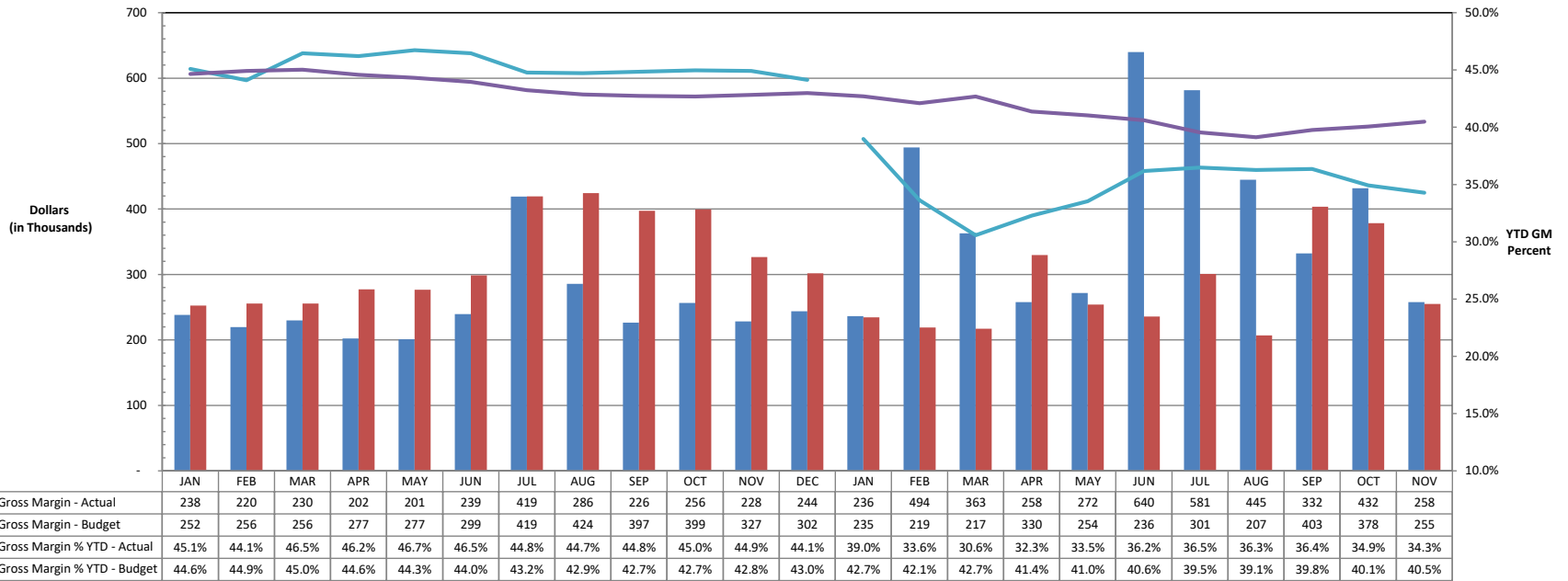


	Jan	Feb	Mar	Apr	May	Jun	Jul	Aug	Sep	Oct	Nov	Dec
2020 Actual	3.06	3.05	3.00	2.97	2.88	3.41	3.42	3.49	3.49	3.86	3.88	3.59
2021 Budget	2.93	2.93	2.93	2.93	2.93	2.93	2.93	2.93	2.93	2.93	2.93	
2021 Actual	3.63	3.69	3.72	3.77	3.83	3.42	3.47	3.39	3.43	3.50	3.44	
Rating Goal	3.00	3.00	3.00	3.00	3.00	3.00	3.00	3.00	3.00	3.00	3.00	3.00
Bond Covenant	1.20	1.20	1.20	1.20	1.20	1.20	1.20	1.20	1.20	1.20	1.20	1.20

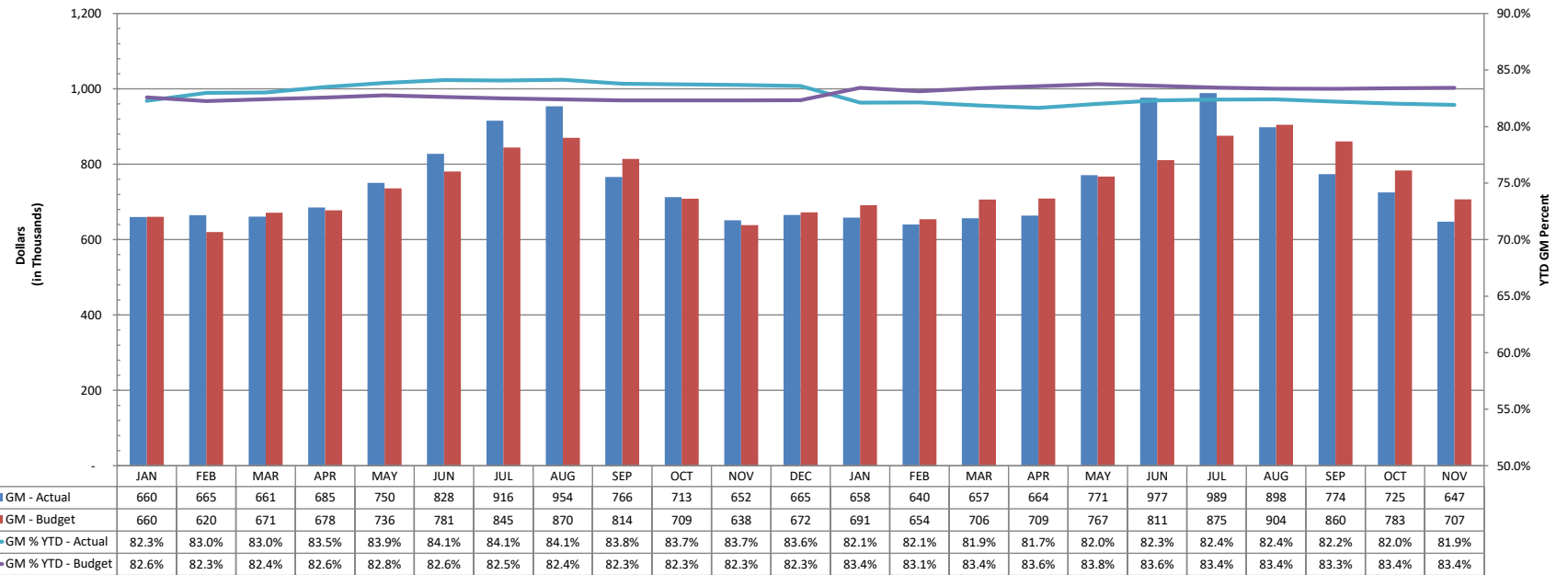
Month

Attachment: Division Reports December 2021 (14290 : Division Reports and Metrics - December 2021)

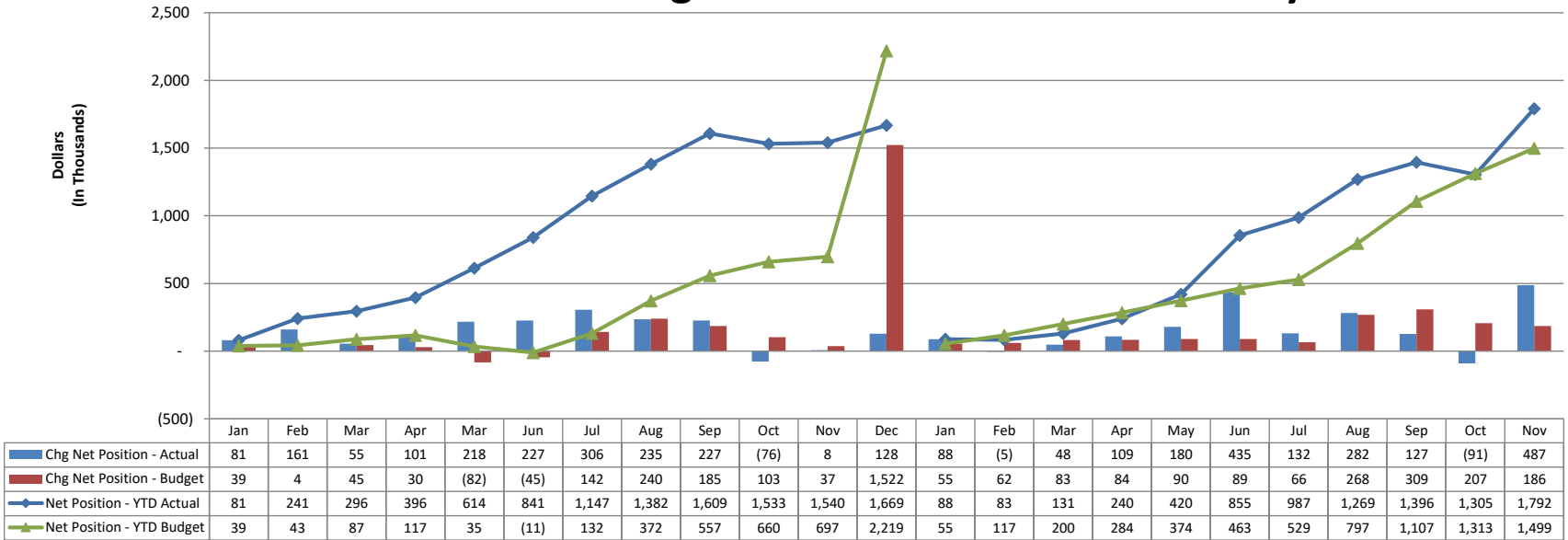
2020 - 2021 Gross Margin - Steam/Wholesale Electric



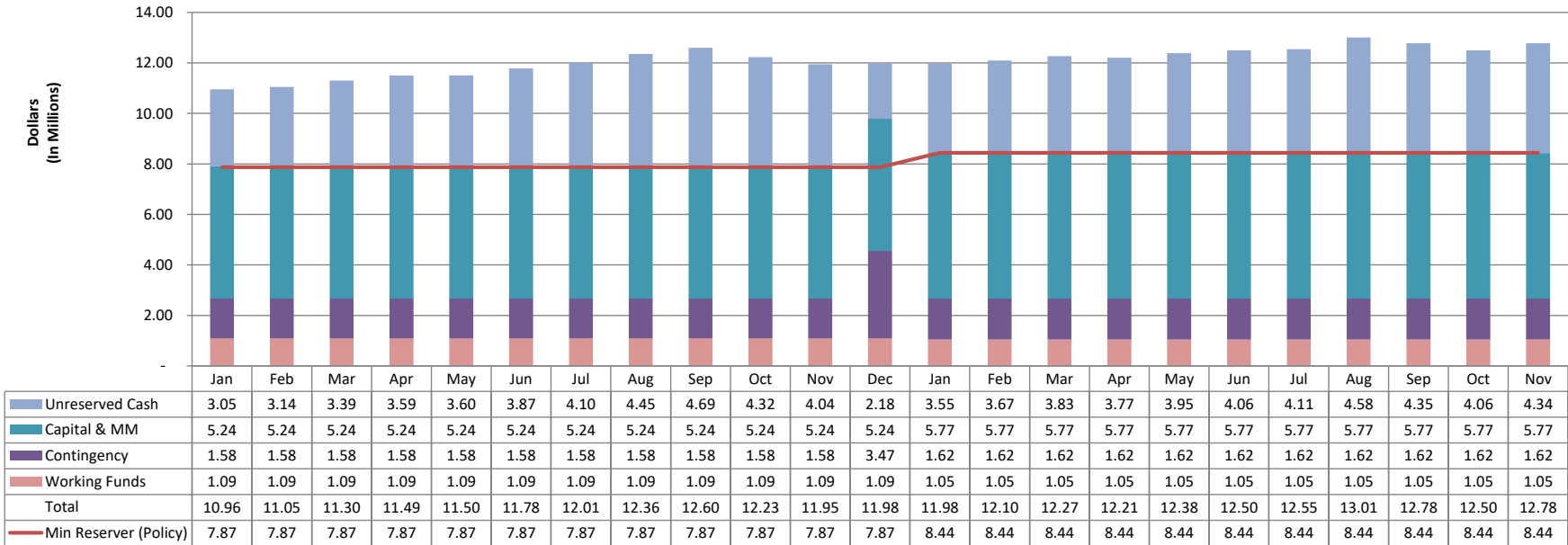
2020 - 2021 Gross Margin - Water Utility



2020 - 2021 Change in Net Position - Water Utility



2020 - 2021 Cash Reserves - Water Utility



Attachment: Division Reports December 2021 (14290 : Division Reports and Metrics - December 2021)



TO: Jeremy Sutton, Director of Power Resources, Fleet & Facilities

FROM: Tina Livingston, Senior Financial Analyst

SUBJECT: LOAD FORECAST SUMMARY FOR 2021

MONTH	SYSTEM ENERGY			PEAK SYSTEM DATA		
	ACTUAL MWH	FORECAST MWH	% DIFF	ACTUAL MW	FORECAST MW	% DIFF
JAN	97,934	101,211	-3.2%	164.6	182.4	-9.7%
FEB	92,648	92,886	-0.3%	172.3	179.6	-4.0%
MAR	90,288	92,601	-2.5%	151.8	158.0	-3.9%
APR	85,195	90,885	-6.3%	158.6	168.7	-6.0%
MAY	92,262	90,824	1.6%	206.9	194.6	6.3%
JUN	119,714	102,551	16.7%	270.3	227.8	18.7%
JUL	120,463	119,695	0.6%	260.2	265.5	-2.0%
AUG	114,973	115,163	-0.2%	239.3	246.3	-2.9%
SEP	94,673	102,700	-7.8%	202.7	238.8	-15.1%
OCT	90,391	92,288	-2.1%	193.7	170.9	13.4%
NOV	86,632	91,584	-5.4%	153.3	171.7	-10.7%
DEC					173.6	
YTD	1,085,172	1,092,388	-0.7			

HISTORICAL SYSTEM PEAK 292.1 MW 07/20/2011

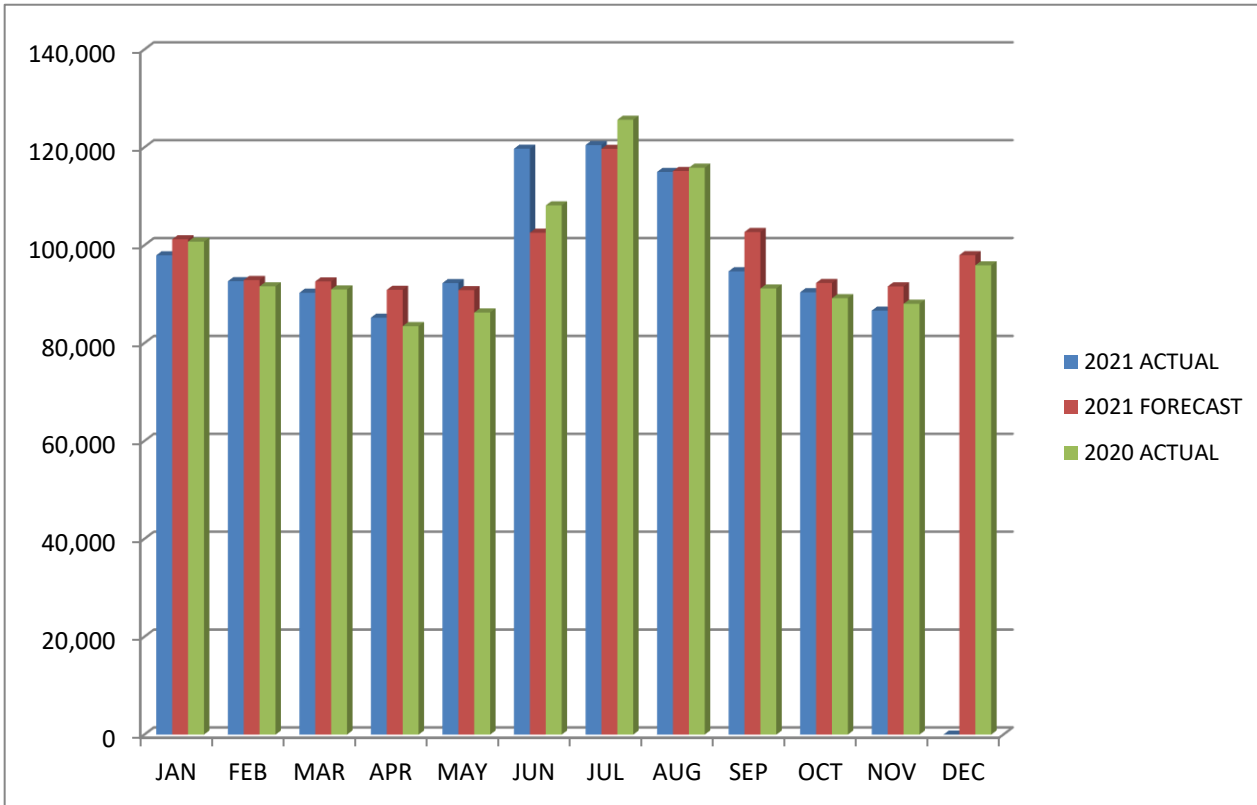
% DIFF = (ACTUAL / FORECAST X 100) - 100

MWH = MEGAWATT HOUR = 1000 KILOWATT HOURS

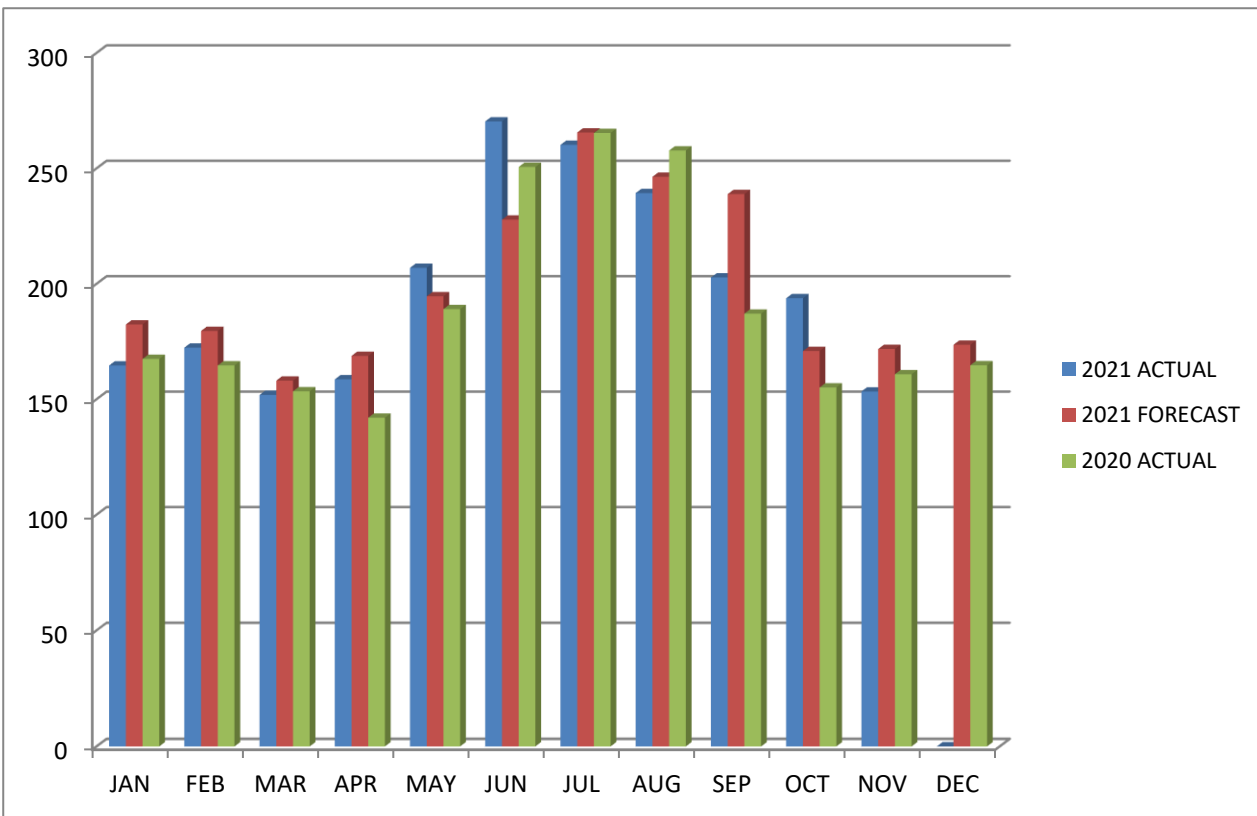
MW = MEGAWATT = 1000 KILOWATTS

2021 YTD SYSTEM REQUIREMENTS

Energy Required for the Month (MWH)



Peak Demand for the Month (MW)



Attachment: Division Reports December 2021 (14290 : Division Reports and Metrics - December 2021)

ROCHESTER PUBLIC UTILITIES

INDEX

K:\RPU\GA\FINANCIAL REPORTS\FINANCIALS CRMO.pdf

DATE: November 2021

TO: _____

From: **Judith Anderson** (507) 292-1217
Controller

SUBJ: **RPU - Financial Statements**

RPU - ELECTRIC UTILITY Financial Reports

<u>Page #</u>	<u>REPORT TITLE:</u>
1	Statement of Net Position - Condensed
2	Statement of Revenues, Expenses & Changes in Net Position YTD
3	Statement of Cash Flows YTD
4 - 5	Production and Sales Statistics - YTD
6	GRAPH - Capital Expenditures
7	GRAPH - Major Maintenance Expenditures
8	GRAPH - Cash & Temporary Investments
9	GRAPH - Changes in Net Position
10	GRAPH - Bonds

RPU - WATER UTILITY Financial Reports

<u>Page #</u>	<u>REPORT TITLE:</u>
11	Statement of Net Position - Condensed
12	Statement of Revenues, Expenses & Changes in Net Position YTD
13	Statement of Cash Flows YTD
14	Production and Sales Statistics - YTD
15	GRAPH - Capital Expenditures
16	GRAPH - Major Maintenance Expenditures
17	GRAPH - Cash & Temporary Investments
18	GRAPH - Changes in Net Position

END OF BOARD PACKET FINANCIALS

Attachment: Division Reports December 2021 (14290 : Division Reports and Metrics - December 2021)

ROCHESTER PUBLIC UTILITIES
STATEMENT OF NET POSITION
ELECTRIC UTILITY
November 30, 2021

	<u>November 2021</u>	<u>November 2020</u>	<u>Difference</u>	<u>% Diff.</u>	<u>October 2021</u>
ASSETS					
CURRENT ASSETS					
CASH & INVESTMENTS					
Unreserved Cash & Investments	43,559,254	23,260,023	20,299,231	87.3	44,451,377
BOARD RESERVED CASH & INVESTMENTS					
Clean Air Rider Reserve	6,529,996	7,263,435	(733,439)	(10.1)	6,529,996
Working Funds Reserve	19,537,000	20,590,000	(1,053,000)	(5.1)	19,537,000
Special Capital & Major Maintnce Reserve	2,800,818	2,300,818	500,000	21.7	2,800,818
Contingency Reserve	10,943,000	10,581,000	362,000	3.4	10,943,000
General Capital & Major Maintnce Reserve	21,078,909	25,905,854	(4,826,945)	(18.6)	21,299,181
Total Reserved Cash & Investments	60,889,723	66,641,107	(5,751,384)	(8.6)	61,109,999
Total Cash & Investments	104,448,977	89,901,130	14,547,847	16.2	105,561,377
Receivables & Accrued Utility Revenues	25,816,822	23,912,816	1,904,006	8.0	27,103,877
Inventory	6,722,229	6,306,824	415,405	6.6	6,707,229
Other Current Assets	1,947,306	2,378,508	(431,202)	(18.1)	1,214,369
RESTRICTED ASSETS					
Restricted Cash and Equivalents	0	0	0	0.0	8,831,049
Total Current Assets	138,935,334	122,499,277	16,436,057	13.4	149,417,888
NON-CURRENT ASSETS					
RESTRICTED ASSETS					
RESTRICTED CASH & INVESTMENTS					
Debt Service Reserve	12,072,991	12,955,835	(882,844)	(6.8)	12,072,991
Funds Held in Trust	0	0	0	0.0	0
Total Restricted Cash & Investments	12,072,991	12,955,835	(882,844)	(6.8)	12,072,991
Total Restricted Assets	12,072,991	12,955,835	(882,844)	(6.8)	12,072,991
CAPITAL ASSETS					
NON-DEPRECIABLE ASSETS					
Land and Land Rights	11,264,662	9,542,782	1,721,880	18.0	11,264,662
Construction Work in Progress	22,528,102	19,409,351	3,118,751	16.1	21,423,766
Total Non-depreciable Assets	33,792,764	28,952,133	4,840,631	16.7	32,688,428
DEPRECIABLE ASSETS					
Utility Plant in Service, Net	241,572,924	245,220,184	(3,647,261)	(1.5)	242,558,527
Steam Assets, Net	1,202,775	1,497,333	(294,557)	(19.7)	1,227,327
Total Depreciable Assets	242,775,699	246,717,517	(3,941,818)	(1.6)	243,785,844
Net Capital Assets	276,568,464	275,669,650	898,813	0.3	276,474,274
Other Non-Current Assets	11,864,740	11,883,466	(18,726)	(0.2)	11,893,689
Total Non-Current Assets	300,506,194	300,508,952	(2,757)	(0.0)	300,440,949
TOTAL ASSETS	439,441,529	423,008,229	16,433,299	3.9	449,858,829
DEFERRED OUTFLOWS OF RESOURCES					
DEFERRED OUTFLOWS OF RESOURCES	3,651,978	1,625,504	2,026,474	124.7	3,644,651
TOTAL ASSETS + DEFERRED OUTFLOW RESOURCE	443,093,507	424,633,734	18,459,773	4.3	453,503,480
LIABILITIES					
CURRENT LIABILITIES					
Accounts Payable	10,372,715	10,555,473	(182,758)	(1.7)	11,306,139
Due to other funds	3,474,600	3,252,712	221,888	6.8	3,494,677
Customer Deposits	2,100,181	1,833,203	266,978	14.6	2,057,088
Compensated absences	1,960,186	1,871,264	88,922	4.8	1,956,176
Accrued Salaries & Wages	557,541	501,223	56,318	11.2	445,169
Interest Payable	0	0	0	0.0	2,876,388
Current Portion of Long Term Debt	7,085,000	6,315,000	770,000	12.2	6,515,000
Misc Other Current Liabilities	1,392	0	1,392	0.0	1,188
Total Current Liabilities	25,551,615	24,328,875	1,222,740	5.0	28,651,799
NON-CURRENT LIABILITIES					
Compensated absences	1,527,346	1,426,915	100,432	7.0	1,519,799
Other Non-Current Liabilities	14,291,386	12,590,021	1,701,365	13.5	14,291,386
Unearned Revenues	1,961,746	2,086,268	(124,522)	(6.0)	1,914,521
Long-Term Debt	167,633,333	175,909,437	(8,276,104)	(4.7)	174,855,777
Total Non-Current Liabilities	185,413,812	192,012,640	(6,598,828)	(3.4)	192,581,488
TOTAL LIABILITIES	210,965,427	216,341,515	(5,376,088)	(2.5)	221,233,277
DEFERRED INFLOWS OF RESOURCES					
DEFERRED INFLOWS OF RESOURCES	1,097,356	2,405,011	(1,307,655)	(54.4)	1,211,109
NET POSITION					
Net Investment in Capital Assets	115,795,479	107,221,429	8,574,050	8.0	106,192,699
Total Restricted Net Position	0	0	0	0.0	5,954,666
Unrestricted Net Position	115,235,244	98,665,777	16,569,467	16.8	118,911,744
TOTAL NET POSITION	231,030,724	205,887,207	25,143,517	12.2	231,059,109
TOTAL LIAB, DEFERRED INFLOWS, NET POSITION	443,093,507	424,633,734	18,459,773	4.3	453,503,480

Attachment: Division Reports December 2021 (14290 : Division Reports and Metrics - December 2021)

ROCHESTER PUBLIC UTILITIES
Statement of Revenues, Expenses & Changes in Net Position

November, 2021
YEAR TO DATE

	<u>Actual YTD</u>	<u>Original Budget YTD</u>	<u>Actual to Original Budget</u>	<u>% Var.</u>	<u>Last Yr Actual YTD</u>
SALES REVENUE					
Retail Revenue					
Electric - Residential Service	52,313,736	50,432,632	1,881,104	3.7	51,193,94
Electric - General & Industrial Service	78,214,806	79,850,815	(1,636,008)	(2.0)	77,208,81
Electric - Public Street & Highway Light	1,519,833	1,360,336	159,497	11.7	1,404,75
Electric - Rental Light Revenue	174,389	233,635	(59,246)	(25.4)	178,01
Electric - Interdepartmentl Service	1,005,805	898,497	107,309	11.9	945,53
Electric - Power Cost Adjustment	565,981	(958,205)	1,524,186	159.1	211,07
Electric - Clean Air Rider	2,003,873	1,913,212	90,661	4.7	1,854,63
Electric - Total Retail Revenue	135,798,424	133,730,921	2,067,503	1.5	132,996,77
Wholesale Electric Revenue					
Energy & Fuel Reimbursement	5,627,090	2,592,502	3,034,588	117.1	1,607,62
Capacity & Demand	488,773	107,070	381,703	356.5	174,89
Total Wholesale Electric Revenue	6,115,863	2,699,572	3,416,291	126.5	1,782,51
Steam Sales Revenue	6,459,633	4,797,000	1,662,633	34.7	4,331,04
TOTAL SALES REVENUE	148,373,920	141,227,493	7,146,427	5.1	139,110,33
COST OF REVENUE					
Purchased Power	80,941,763	81,717,806	(776,043)	(0.9)	78,802,81
Generation Fuel, Chemicals & Utilities	8,264,644	4,461,535	3,803,109	85.2	3,367,61
TOTAL COST OF REVENUE	89,206,407	86,179,341	3,027,066	3.5	82,170,42
GROSS MARGIN					
Retail	54,856,660	52,013,114	2,843,546	5.5	54,193,96
Wholesale	4,310,852	3,035,037	1,275,815	42.0	2,745,95
TOTAL GROSS MARGIN	59,167,513	55,048,152	4,119,361	7.5	56,939,91
FIXED EXPENSES					
Utilities Expense	403,281	408,863	(5,582)	(1.4)	405,31
Depreciation & Amortization	13,381,736	12,978,507	403,229	3.1	13,557,15
Salaries & Benefits	18,631,278	16,848,501	1,782,776	10.6	18,149,48
Materials, Supplies & Services	9,922,668	10,808,184	(885,516)	(8.2)	9,634,20
Inter-Utility Allocations	(1,723,526)	(1,575,750)	(147,776)	(9.4)	(1,600,25)
TOTAL FIXED EXPENSES	40,615,436	39,468,305	1,147,131	2.9	40,145,91
Other Operating Revenue	14,333,044	8,964,493	5,368,550	59.9	17,989,10
NET OPERATING INCOME (LOSS)	32,885,120	24,544,340	8,340,780	34.0	34,783,10
NON-OPERATING REVENUE / (EXPENSE)					
Investment Income (Loss)	1,071,864	1,531,749	(459,885)	(30.0)	1,314,48
Interest Expense	(5,100,937)	(5,686,491)	585,554	10.3	(5,824,40)
Amortization of Debt Issue Costs	(97,161)	(70,741)	(26,419)	(37.3)	(74,16)
Miscellaneous - Net	(250,499)	(17,350)	(233,149)	(1,343.8)	118,97
TOTAL NON-OPERATING REV (EXP)	(4,376,733)	(4,242,833)	(133,899)	(3.2)	(4,465,11)
INCOME (LOSS) BEFORE TRANSFERS / CAPITAL CONTRIBUTIONS	28,508,388	20,301,507	8,206,881	40.4	30,317,99
Transfers Out	(7,775,457)	(7,907,816)	132,359	1.7	(7,685,93)
Capital Contributions	4,825,374	7,430,870	(2,605,496)	(35.1)	1,726,69
CHANGE IN NET POSITION	25,558,304	19,824,560	5,733,744	28.9	24,358,76
Net Position, Beginning	205,472,420				181,528,44
NET POSITION, ENDING	231,030,724				205,887,20

Attachment: Division Reports December 2021 (14290 : Division Reports and Metrics - December 2021)

Rolling 12 Months Planned for Curr Year
3.76 2.93

Debt Coverage Ratio

2

12/16/2021 9:19 AM

12/16/21

ROCHESTER PUBLIC UTILITIES
STATEMENT OF CASH FLOWS
ELECTRIC UTILITY
FOR
NOVEMBER, 2021
YEAR-TO-DATE

	<u>Actual YTD</u>	<u>Last Yr Actual YTD</u>
8 CASH FLOWS FROM OPERATING ACTIVITIES		
9 Cash Received From Customers	149,167,263	139,700,012
10 Cash Received From Other Revenue Sources	4,267,058	0
11 Cash Received From Wholesale & Steam Customer	12,011,213	6,135,029
12 Cash Paid for:		
13 Purchased Power	(81,467,485)	(78,906,323)
14 Operations and Maintenance	(27,008,504)	(27,964,001)
15 Fuel	(7,818,134)	(3,596,277)
16 Payment in Lieu of Taxes	(7,847,362)	(7,778,740)
17 Net Cash Provided by(Used in) Utility		
18 Operating Activities	41,304,049	27,589,700
19 Sewer, Storm Water, Sales Tax & MN Water Fee Collections		
20 Receipts from Customers	41,233,009	39,989,987
21 Remittances to Government Agencies	(41,612,947)	(39,975,426)
22 Net Cash Provided by(Used in) Non-Utility		
23 Operating Activities	(379,938)	14,561
24 NET CASH PROVIDED BY(USED IN)		
25 OPERATING ACTIVITIES	40,924,111	27,604,261
26 CASH FLOWS FROM CAPITAL & RELATED		
27 FINANCING ACTIVITIES		
28 Additions to Utility Plant & Other Assets	(14,957,138)	(14,183,891)
29 Payments related to Service Territory Acquisition	(111,751)	(184,477)
30 Payment on Long-Term Debt	(3,340,000)	(6,015,000)
31 Net Bond/Loan Receipts	0	0
32 Cash Paid for Interest & Commissions	(11,227,316)	(8,080,100)
33 NET CASH PROVIDED BY(USED IN)		
34 CAPITAL & RELATED ACTIVITIES	(29,636,205)	(28,463,468)
35 CASH FLOWS FROM INVESTING ACTIVITIES		
36 Interest Earnings on Investments	690,866	857,275
37 Construction Fund (Deposits)Draws	0	0
38 Bond Reserve Account	2,057,373	1,174,591
39 Escrow/Trust Account Activity	0	756
40 NET CASH PROVIDED BY(USED IN)		
41 INVESTING ACTIVITIES	2,748,239	2,032,622
42 Net Increase(Decrease) in Cash & Investments	14,036,145	1,173,415
43 Cash & Investments, Beginning of Period	90,412,832	88,727,715
44 CASH & INVESTMENTS, END OF PERIOD	104,448,977	89,901,130
45 Externally Restricted Funds	12,072,991	12,955,835
46 Grand Total	116,521,968	102,856,965

12/16/2021

**ROCHESTER PUBLIC UTILITIES
PRODUCTION & SALES STATISTICS
ELECTRIC UTILITY**

**November, 2021
YEAR-TO-DATE**

		<u>Actual YTD</u>	<u>Budget YTD</u>	<u>Variance</u>	<u>% Var.</u>	<u>Last Yr Actual YTD</u>	
9	ENERGY SUPPLY (kWh)						
		<i>(primarily calendar month)</i>					
10	Net Generation						
11	IBM Diesel Generators	26,219	0	26,219	-	40,067	
12	Lake Zumbro Hydro	8,343,343	12,480,600	(4,137,257)	(33.1)	15,567,323	
13	Cascade Creek Gas Turbine	33,160,413	17,055,000	16,105,413	94.4	13,758,123	
14	Westside Energy Station	50,047,200	35,170,000	14,877,200	42.3	32,488,371	
15	Total Net Generation	91,577,175	64,705,600	26,871,575	41.5	61,853,884	
16	Other Power Supply						
17	Firm Purchases	1,072,720,364	1,079,229,824	(6,509,460)	(0.6)	1,054,164,258	
18	Non-Firm Purchases	4,319,969	676,851	3,643,118	538.2	3,228,209	
19	LRP Received	0	0	0	-	0	
20	Total Other Power Supply	1,077,040,333	1,079,906,674	(2,866,341)	(0.3)	1,057,392,467	
21	TOTAL ENERGY SUPPLY	1,168,617,508	1,144,612,274	24,005,234	2.1	1,119,246,351	
22	ENERGY USES (kWh)						
		<i>(primarily billing period)</i>					
23	Retail Sales	<u># Custs</u>					
24	Electric - Residential Service	53,270	349,298,350	331,224,451	18,073,899	5.5	341,473,102
25	Electric - General Service & Industrial	5,143	686,418,122	718,552,825	(32,134,703)	(4.5)	681,381,621
26	Electric - Street & Highway Lighting	3	3,977,068	5,602,648	(1,625,580)	(29.0)	5,327,710
27	Electric - Rental Lights	n/a	755,121	834,067	(78,946)	(9.5)	813,482
28	Electric - Interdptmntl Service	1	7,456,653	6,681,528	775,125	11.6	6,830,178
29	Total Customers	<u>58,417</u>					
30	Total Retail Sales		1,047,905,314	1,062,895,519	(14,990,205)	(1.4)	1,035,826,092
31	Wholesale Sales		83,337,957	52,225,000	31,112,957	59.6	46,388,507
32	Company Use		2,055,572	2,848,164	(792,592)	(27.8)	2,098,776
33	TOTAL ENERGY USES		1,133,298,843	1,117,968,683	15,330,160	1.4	1,084,313,375
34	Lost & Unacctd For Last 12 Months		38,679,050	2.9%			
35	STEAM SALES (mlbs)						
		<i>(primarily billing period)</i>					
36	Steam Sales in Mlbs	422,335	576,644	(154,309)	(26.8)	451,254	

Attachment: Division Reports December 2021 (14290 : Division Reports and Metrics - December 2021)

12/16/2021

1 **ROCHESTER PUBLIC UTILITIES**
 2 **PRODUCTION & SALES STATISTICS (continued)**
 3 **ELECTRIC UTILITY**

4 **November, 2021**

5 **YEAR-TO-DATE**

		<u>Actual YTD</u>		<u>Budget YTD</u>		<u>Variance</u>	<u>% Var.</u>		<u>Last Yr Actual YTD</u>
9	FUEL USAGE								
		<i>(calendar month)</i>							
10	Gas Burned								
11	SLP	569,212	MCF	761,170	MCF	(191,958)	(25.2)	602,156	MCF
12	Cascade	309,271	MCF	147,774	MCF	161,497	109.3	148,434	MCF
13	Westside	392,454	MCF	230,454	MCF	162,000	70.3	252,491	MCF
14	Total Gas Burned	1,270,937	MCF	1,139,398	MCF	131,539	11.5	1,003,081	MCF
15	Oil Burned								
16	Cascade	206,143	GAL	0	GAL	206,143	-	3,276	GAL
17	IBM	2,136	GAL	0	GAL	2,136	-	3,512	GAL
18	Total Oil Burned	208,279	GAL	0	GAL	208,279	-	6,788	GAL

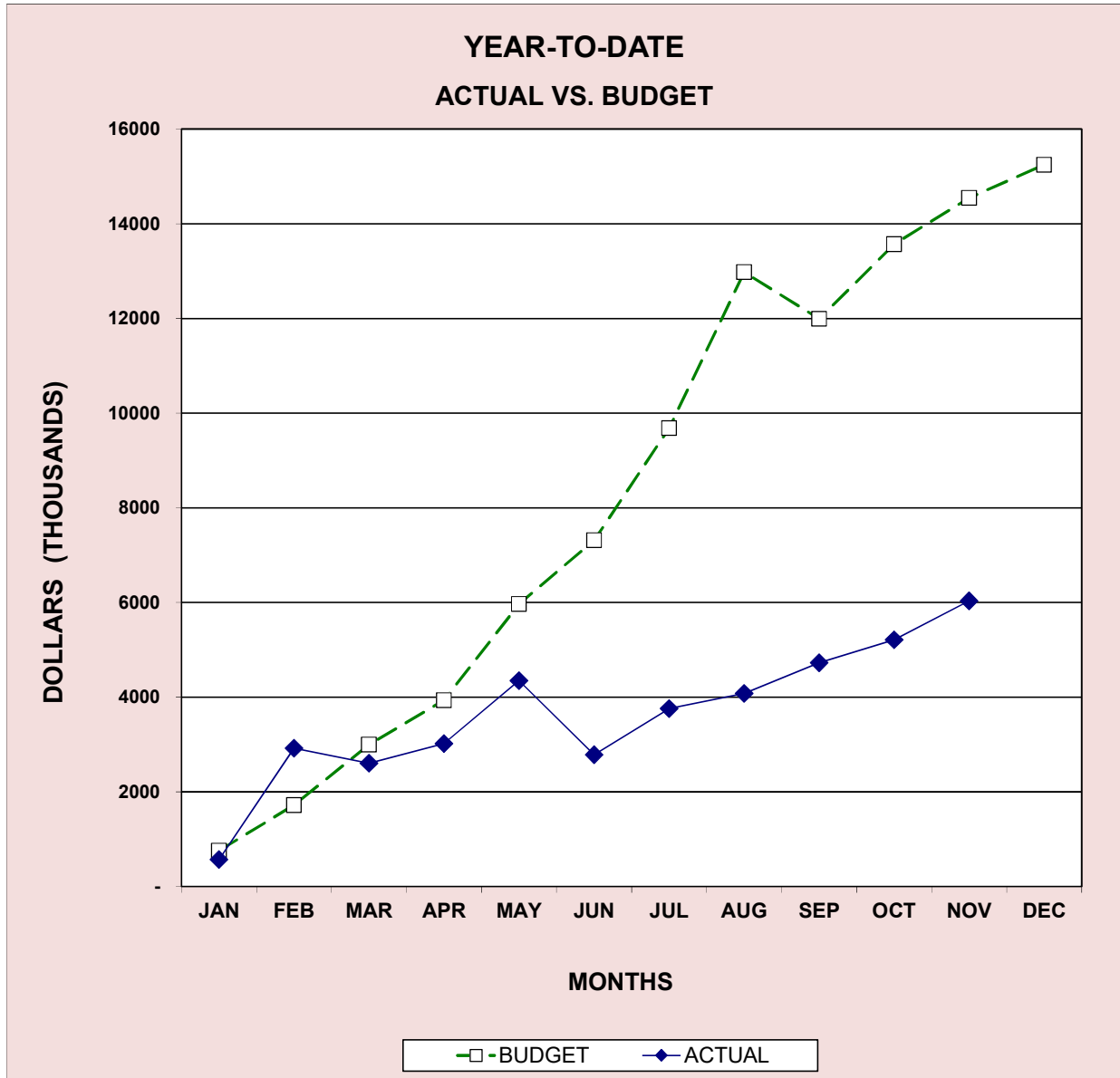
Attachment: Division Reports December 2021 (14290 : Division Reports and Metrics - December 2021)

**CAPITAL EXPENDITURES
ELECTRIC**

Current Year	
ANNUAL BUDGET	15,246,736
ACTUAL YTD	6,033,883
% OF BUDGET	39.6%

November, 2021

Prior Years Ending Dec 31st		
2020	2019	2018
15,059,888	21,990,984	31,779,490
10,078,628	11,174,211	16,646,579
66.9%	50.8%	52.4%



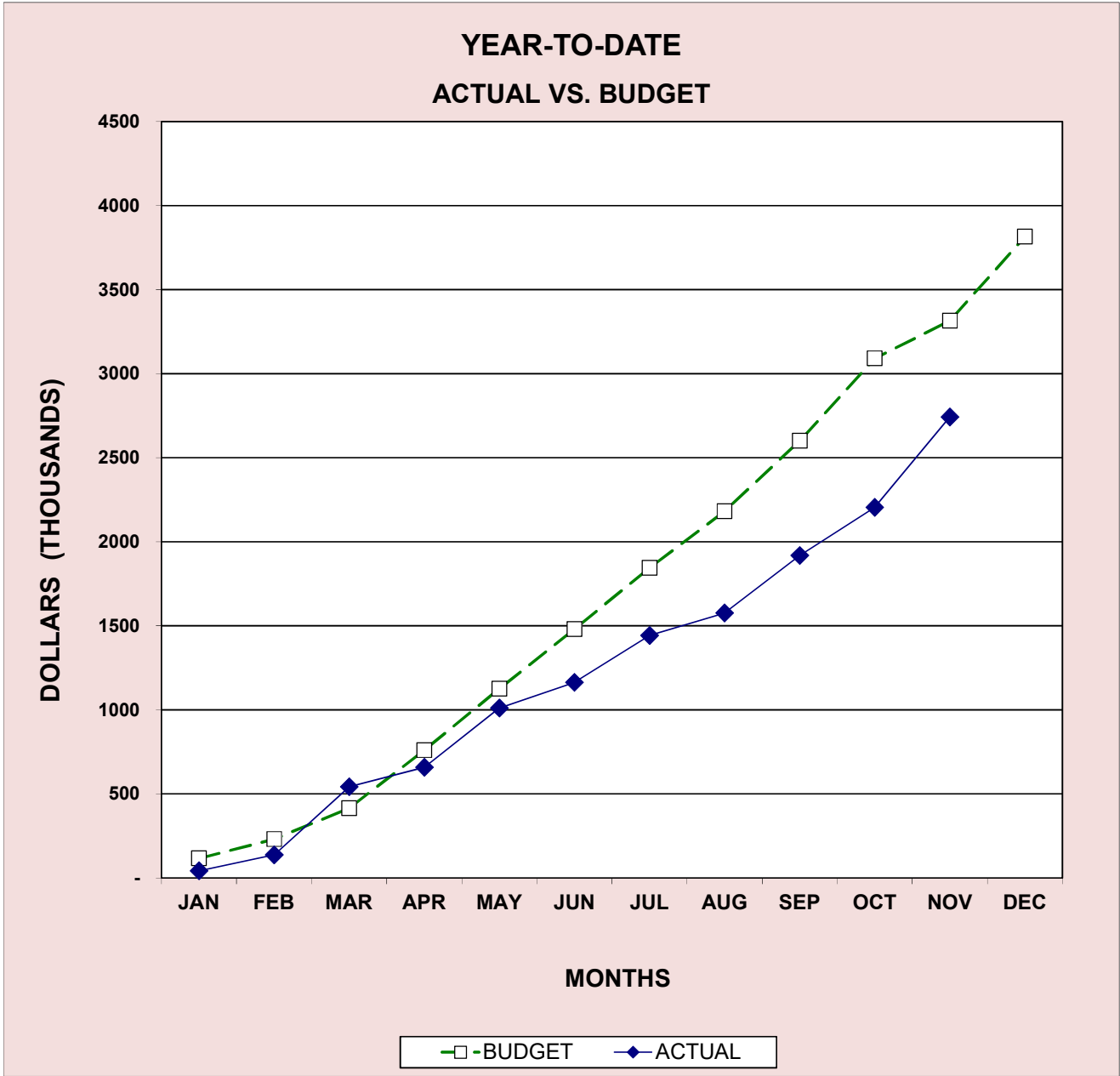
Attachment: Division Reports December 2021 (14290 : Division Reports and Metrics - December 2021)

**MAJOR MAINTENANCE EXPENDITURES
ELECTRIC**

November, 2021

Current Year	
ANNUAL BUDGET	3,815,243
ACTUAL YTD	2,742,381
% OF BUDGET	71.9%

Prior Years Ending Dec 31st		
2020	2019	2018
4,010,088	3,353,049	3,038,283
3,111,620	2,881,017	2,421,088
77.6%	85.9%	79.7%



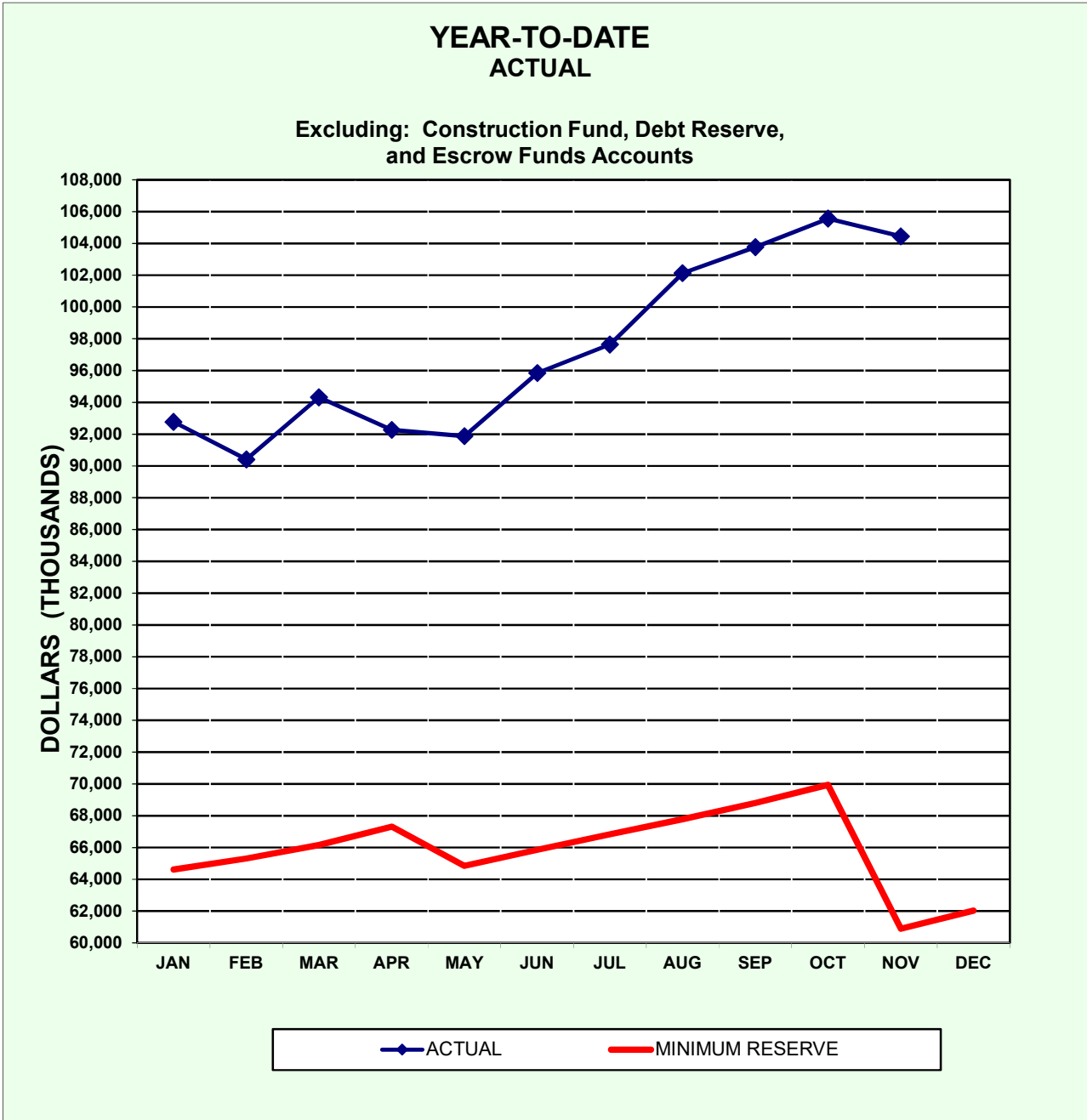
Attachment: Division Reports December 2021 (14290 : Division Reports and Metrics - December 2021)

CASH AND TEMPORARY INVESTMENTS ELECTRIC

November, 2021

YEAR-TO-DATE ACTUAL

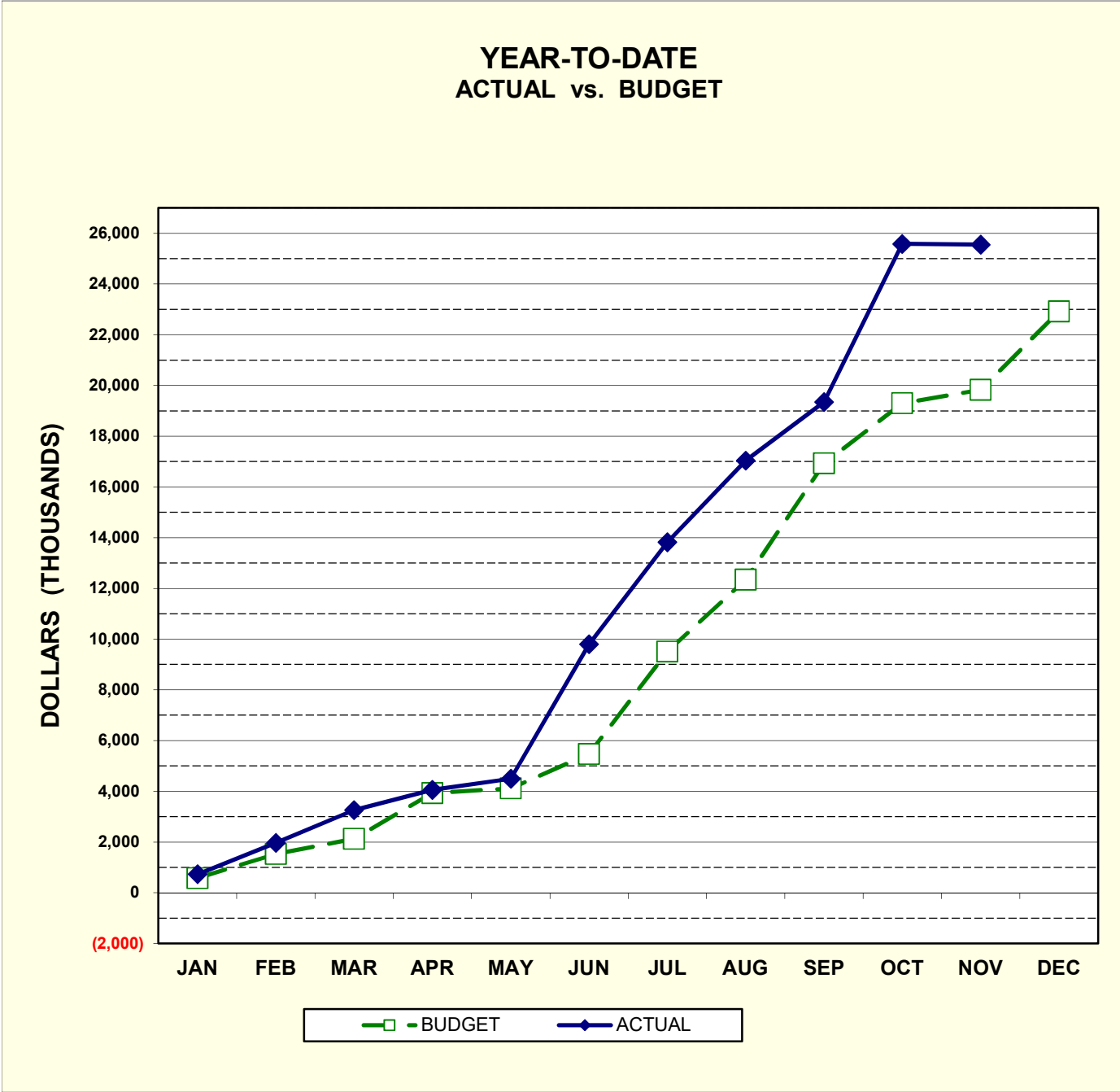
Excluding: Construction Fund, Debt Reserve,
and Escrow Funds Accounts



Attachment: Division Reports December 2021 (14290 : Division Reports and Metrics - December 2021)

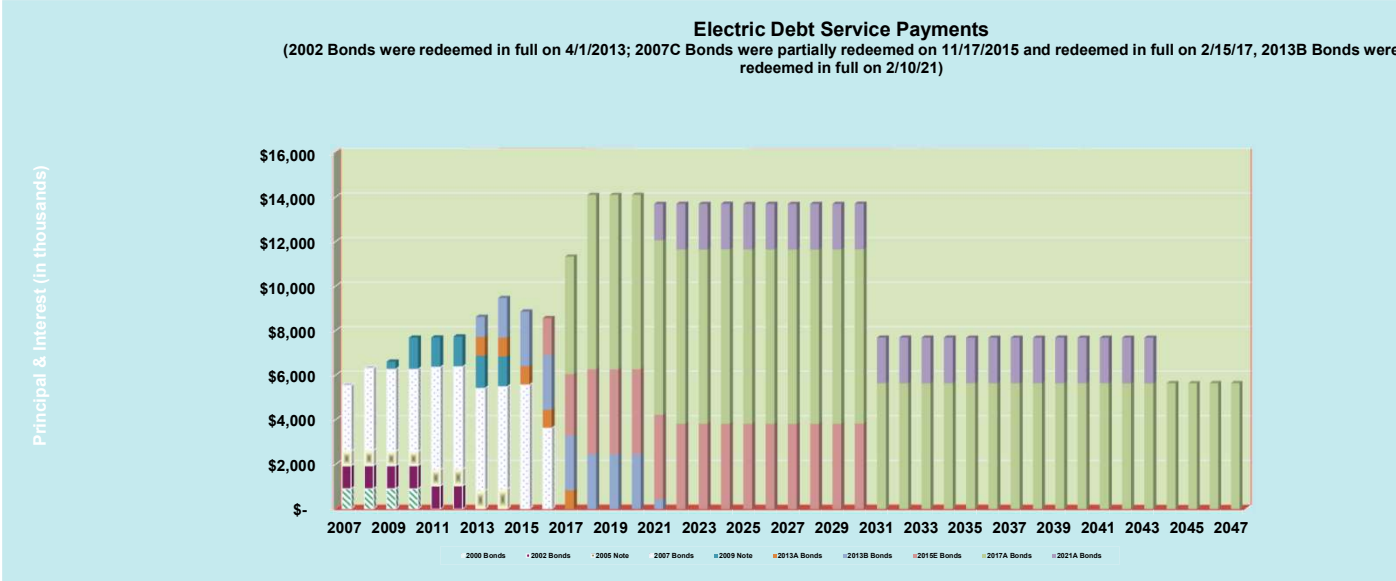
CHANGE IN NET POSITION ELECTRIC

November, 2021

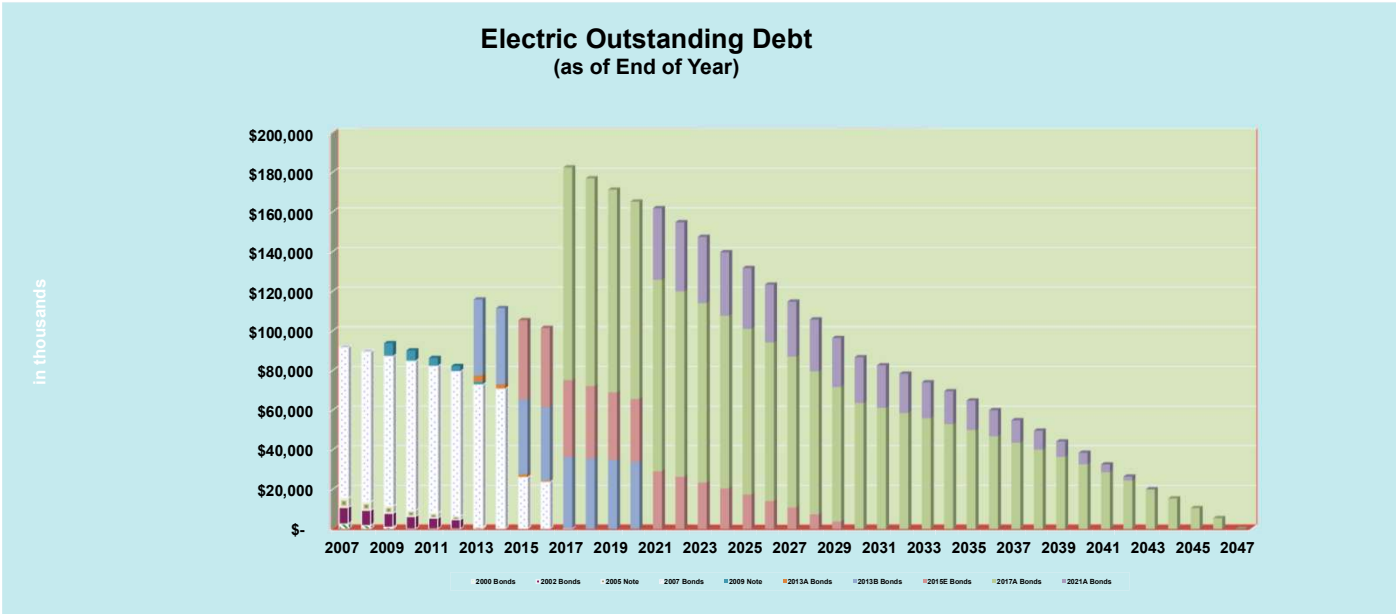


Attachment: Division Reports December 2021 (14290 : Division Reports and Metrics - December 2021)

11/30/2021



11/30/2021



Attachment: Division Reports December 2021 (14290 : Division Reports and Metrics - December 2021)

ROCHESTER PUBLIC UTILITIES
STATEMENT OF NET POSITION
WATER UTILITY
November 30, 2021

	<u>November 2021</u>	<u>November 2020</u>	<u>Difference</u>	<u>% Diff.</u>	<u>October 2021</u>
ASSETS					
CURRENT ASSETS					
CASH & INVESTMENTS					
Unreserved Cash & Investments	4,343,552	4,040,819	302,733	7.5	4,064,258
BOARD RESERVED CASH & INVESTMENTS					
Working Funds Reserve	1,045,000	1,086,000	(41,000)	(3.8)	1,045,000
Capital & Major Maintenance Reserve	5,766,000	5,238,000	528,000	10.1	5,766,000
Contingency Reserve	1,622,000	1,584,000	38,000	2.4	1,622,000
Total Reserved Cash & Investments	8,433,000	7,908,000	525,000	6.6	8,433,000
Total Cash & Investments	12,776,552	11,948,819	827,733	6.9	12,497,258
Receivables & Accrued Utility Revenues	961,809	957,669	4,140	0.4	1,088,995
Inventories	220,120	193,079	27,041	14.0	213,791
Other Current Assets	102,821	144,648	(41,828)	(28.9)	14,129
Total Current Assets	14,061,302	13,244,215	817,087	6.2	13,814,173
CAPITAL ASSETS					
NON-DEPRECIABLE ASSETS					
Land and Land Rights	677,486	677,486	0	0.0	677,486
Construction Work in Progress	4,097,254	3,039,077	1,058,177	34.8	4,294,265
Total Non-depreciable Assets	4,774,740	3,716,563	1,058,177	28.5	4,971,751
DEPRECIABLE ASSETS					
Utility Plant in Service, Net	95,311,460	94,243,470	1,067,990	1.1	95,063,865
Net Capital Assets	100,086,200	97,960,033	2,126,167	2.2	100,035,616
Total Non-Current Assets	100,086,200	97,960,033	2,126,167	2.2	100,035,616
TOTAL ASSETS	114,147,502	111,204,248	2,943,254	2.6	113,849,789
DEFERRED OUTFLOWS OF RESOURCES					
DEFERRED OUTFLOWS OF RESOURCES	227,330	97,183	130,147	133.9	224,574
TOTAL ASSETS + DEFERRED OUTFLOW RESOURCE	114,374,832	111,301,431	3,073,402	2.8	114,074,363
LIABILITIES					
CURRENT LIABILITIES					
Accounts Payable	367,576	225,628	141,948	62.9	479,076
Customer Deposits	110,739	141,067	(30,328)	(21.5)	118,604
Compensated Absences	266,205	333,934	(67,729)	(20.3)	274,604
Accrued Salaries & Wages	75,362	62,910	12,452	19.8	38,078
Total Current Liabilities	819,882	763,539	56,343	7.4	910,362
NON-CURRENT LIABILITIES					
Compensated Absences	159,795	166,289	(6,495)	(3.9)	159,654
Other Non-Current Liabilities	1,807,972	1,561,107	246,866	15.8	1,807,972
Total Non-Current Liabilities	1,967,767	1,727,396	240,371	13.9	1,967,626
TOTAL LIABILITIES	2,787,649	2,490,936	296,714	11.9	2,877,988
DEFERRED INFLOWS OF RESOURCES					
DEFERRED INFLOWS OF RESOURCES	124,619	258,800	(134,181)	(51.8)	220,642
NET POSITION					
Net Investment in Capital Assets	100,086,200	97,960,033	2,126,167	2.2	100,035,616
Unrestricted Net Assets (Deficit)	11,376,364	10,591,662	784,702	7.4	10,940,116
TOTAL NET POSITION	111,462,564	108,551,695	2,910,869	2.7	110,975,732
TOTAL LIAB, DEFERRED INFLOWS, NET POSITION	114,374,832	111,301,431	3,073,402	2.8	114,074,363

Attachment: Division Reports December 2021 (14290 : Division Reports and Metrics - December 2021)

12/16/2021

ROCHESTER PUBLIC UTILITIES
Statement of Revenues, Expenses & Changes in Net Position
WATER UTILITY
November, 2021
YEAR TO DATE

	<u>Actual YTD</u>	<u>Original Budget YTD</u>	<u>Actual to Original Budget</u>	<u>% Var.</u>	<u>Last Yr Actual YTD</u>
7					
8					
9					
10					
11					
12					
13					
14					
15					
16					
17					
18					
19					
20					
21					
22					
23					
24					
25					
26					
27					
28					
29					
30					
31					
32					
33					
34					
35					
36					
37					
38					
39					

Attachment: Division Reports December 2021 (14290 : Division Reports and Metrics - December 2021)

12/16/21

ROCHESTER PUBLIC UTILITIES
STATEMENT OF CASH FLOWS
WATER UTILITY
FOR
NOVEMBER, 2021
YEAR-TO-DATE

	<u>Actual YTD</u>	<u>Last Yr Actual YTD</u>
CASH FLOWS FROM OPERATING ACTIVITIES		
Cash Received From Customers	11,846,411	11,022,510
Cash Paid for:		
Operations and Maintenance	(7,756,694)	(7,296,226)
Payment in Lieu of Taxes	(380,715)	(359,802)
Net Cash Provided by(Used in) Utility Operating Activities	3,709,002	3,366,482
Sales Tax & MN Water Fee Collections		
Receipts from Customers	442,133	478,982
Remittances to Government Agencies	(435,580)	(426,056)
Net Cash Provided by(Used in) Non-Utility Operating Activities	6,553	52,926
NET CASH PROVIDED BY(USED IN) OPERATING ACTIVITIES	3,715,555	3,419,408
CASH FLOWS FROM CAPITAL & RELATED FINANCING ACTIVITIES		
Additions to Utility Plant & Other Assets	(3,094,792)	(2,205,480)
Payment on Long-Term Debt	0	0
Net Loan Receipts	0	0
Cash Paid for Interest & Commissions	0	0
NET CASH PROVIDED BY(USED IN) CAPITAL & RELATED ACTIVITIES	(3,094,792)	(2,205,480)
CASH FLOWS FROM INVESTING ACTIVITIES		
Interest Earnings on Investments	180,357	205,694
NET CASH PROVIDED BY(USED IN) INVESTING ACTIVITIES	180,357	205,694
Net Increase(Decrease) in Cash & Investments	801,120	1,419,622
Cash & Investments, Beginning of Period	11,975,432	10,529,197
CASH & INVESTMENTS, END OF PERIOD	12,776,552	11,948,819

12/16/2021

**ROCHESTER PUBLIC UTILITIES
PRODUCTION & SALES STATISTICS
WATER UTILITY**

**November, 2021
YEAR-TO-DATE**

		<u>Actual YTD</u>	<u>Budget YTD</u>	<u>Variance</u>	<u>% Var.</u>	<u>Last Yr Actual YTD</u>
		(ccf)	(ccf)	(ccf)		
9	PUMPAGE	<i>(primarily calendar month)</i>				
10	TOTAL PUMPAGE	5,804,418	5,319,420	484,998	9.1	5,468,970
11	RETAIL SALES	<i>(primarily billing period)</i>				
		<u># Custs</u>				
12	Water - Residential Service	37,560	2,861,469	2,474,221	387,248	15.7
13	Water - Commercial Service	3,717	2,065,795	2,011,001	54,794	2.7
14	Water - Industrial Service	23	586,410	811,735	(225,325)	(27.8)
15	Water - Interdptmntl Service	<u>1</u>	17,930	18,522	(592)	(3.2)
16	Total Customers	<u>41,301</u>				
17	TOTAL RETAIL SALES	5,531,603	5,315,479	216,124	4.1	5,207,312
18	Lost & Unacctd For Last 12 Months	438,160	7.2%			

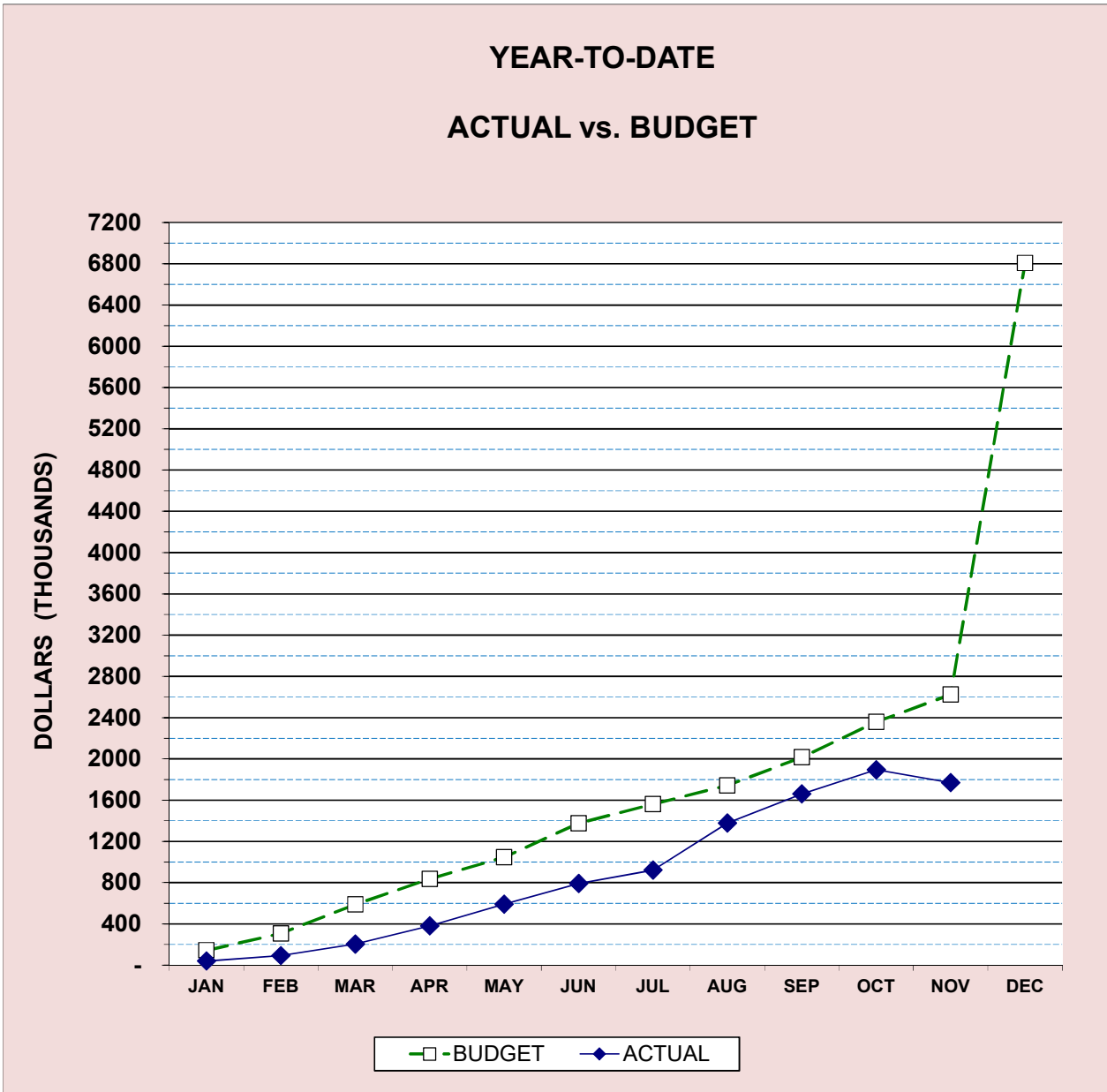
Attachment: Division Reports December 2021 (14290 : Division Reports and Metrics - December 2021)

**CAPITAL EXPENDITURES
WATER**

Current Year	
ANNUAL BUDGET	6,807,825
ACTUAL YTD	1,768,479
% OF BUDGET	26.0%

November, 2021

Prior Years Ending Dec 31st		
2020	2019	2018
5,917,740	4,554,317	3,171,521
2,365,830	1,689,025	2,264,812
40.0%	37.1%	71.4%



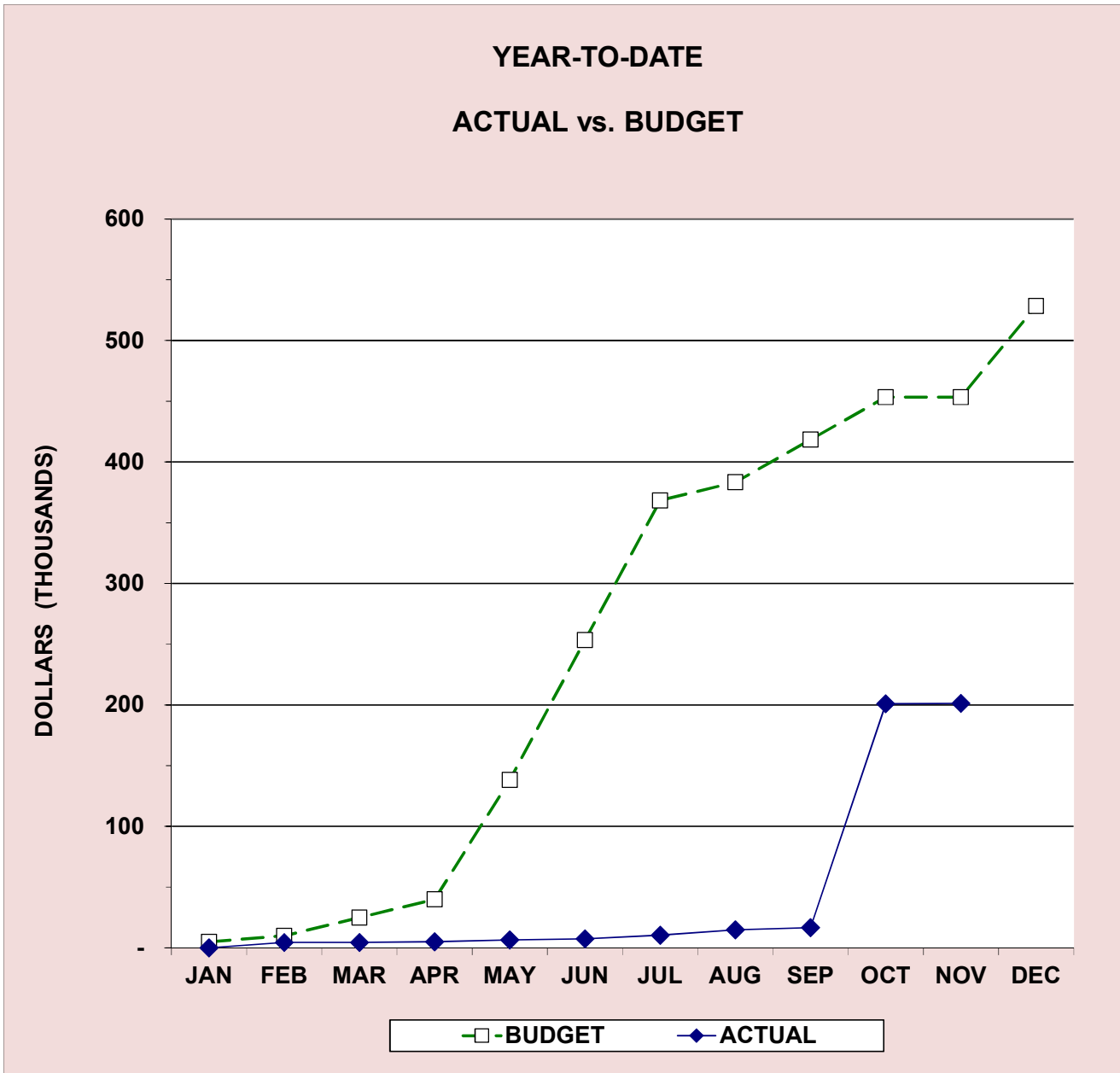
Attachment: Division Reports December 2021 (14290 : Division Reports and Metrics - December 2021)

**MAJOR MAINTENANCE EXPENDITURES
WATER**

November, 2021

<u>Current Year</u>	
ANNUAL BUDGET	528,408
ACTUAL YTD	201,288
% OF BUDGET	38.1%

Prior Years Ending Dec 31st		
<u>2020</u>	<u>2019</u>	<u>2018</u>
552,500	567,500	507,000
521,228	322,751	303,726
94.3%	56.9%	59.9%

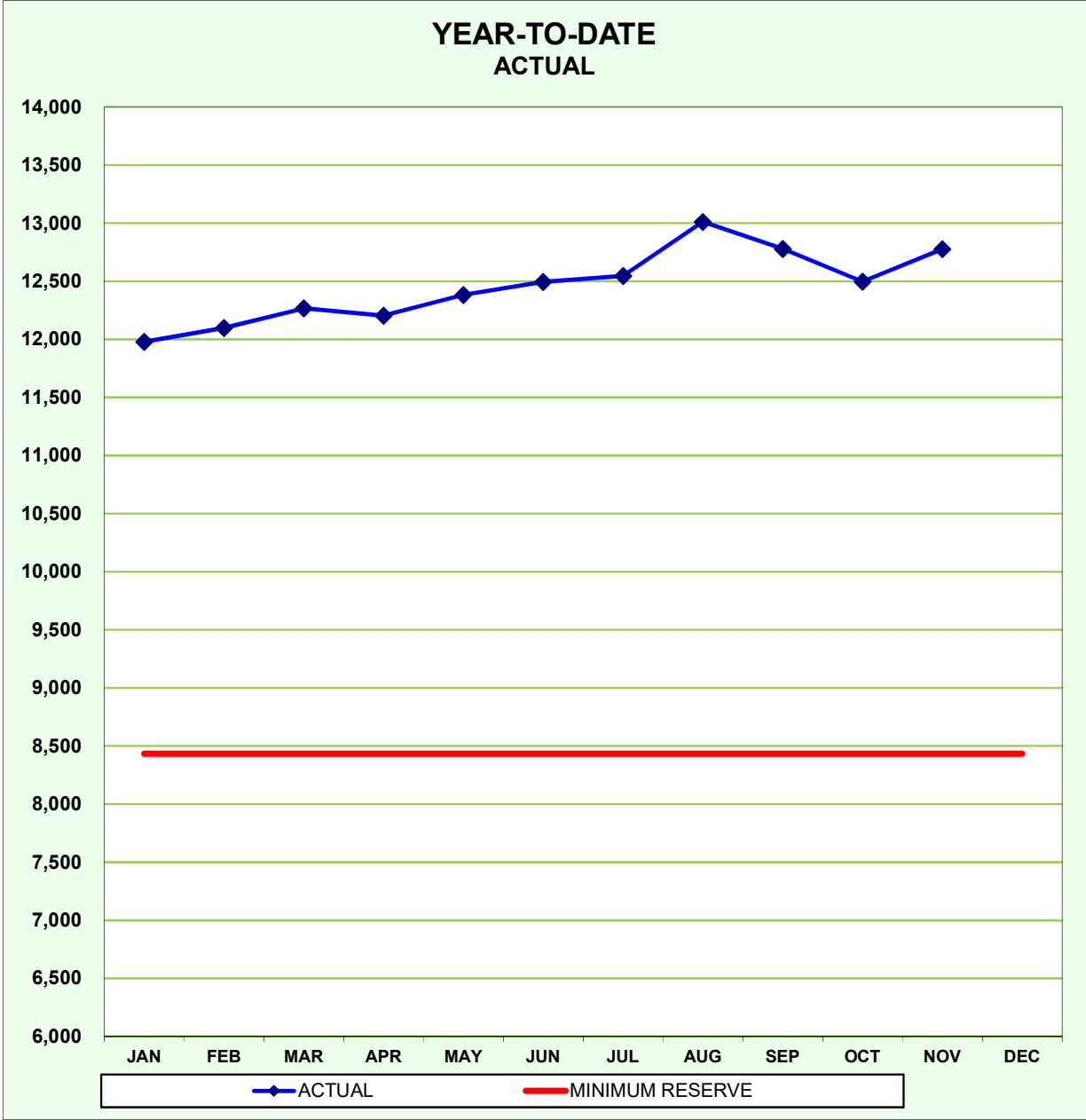


Attachment: Division Reports December 2021 (14290 : Division Reports and Metrics - December 2021)

CASH AND TEMPORARY INVESTMENTS

WATER

November, 2021

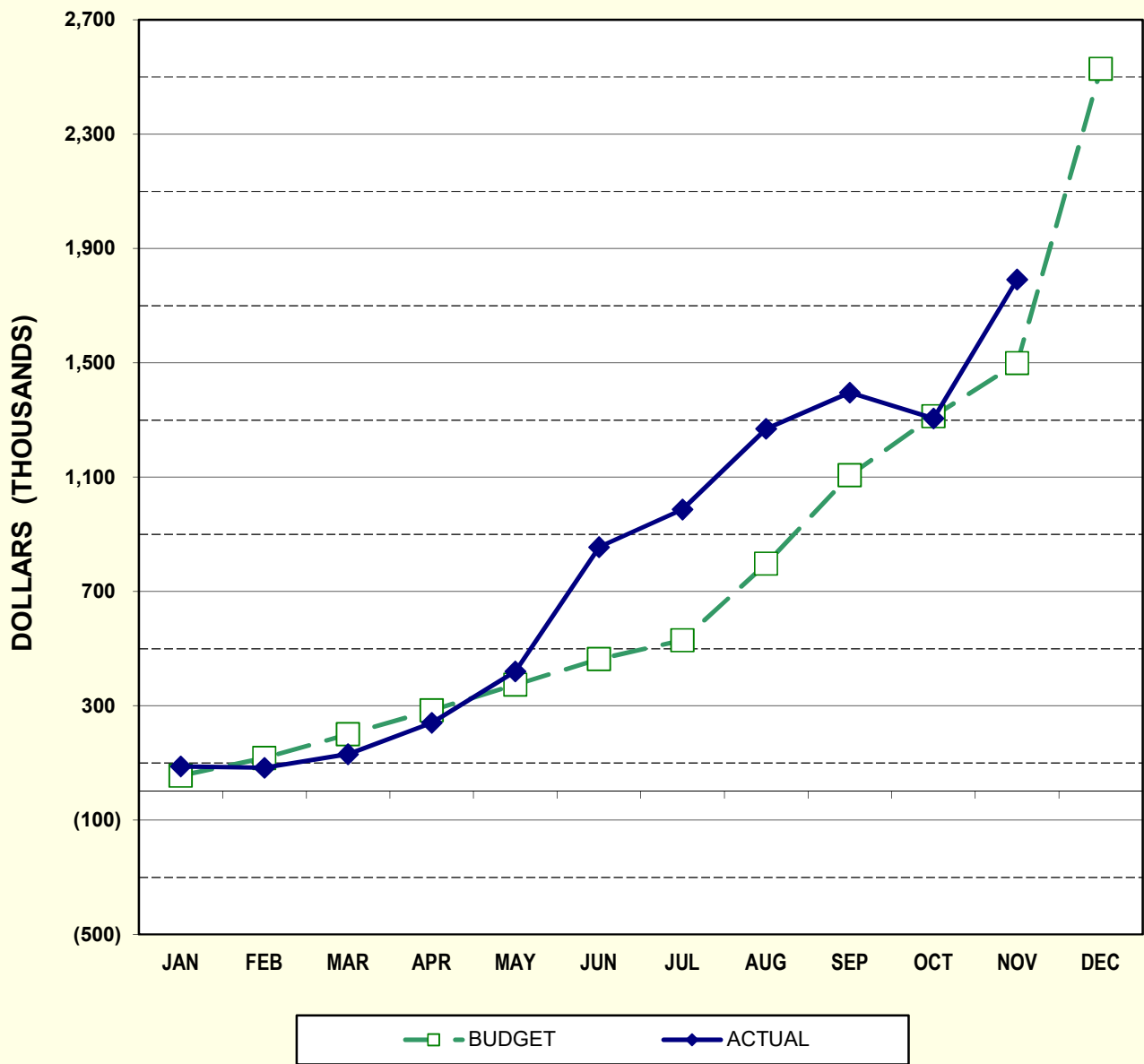


Attachment: Division Reports December 2021 (14290 : Division Reports and Metrics - December 2021)

CHANGE IN NET POSITION WATER

November, 2021

YEAR-TO-DATE ACTUAL vs. BUDGET



Attachment: Division Reports December 2021 (14290 : Division Reports and Metrics - December 2021)