

# INSUL-HOLD

## INSULATION SUPPORT SYSTEM A GREEN BUILDING SOLUTION

PATENTED

### What is Insul-Hold?

Insul-Hold is an insulation support system. It holds most types of insulation in place with its 2-1/2" arrow. Insul-Hold creates maximum efficiency by preventing sagging, decreasing heating or cooling cost, maximizing R Value, reducing moisture, improving sound control, and meeting all federal specifications.

### How Does Insul-Hold actually hold insulation in place?

Insul-Hold fastens to metal framing, steel, concrete, masonry, and wood with fasteners, nails, or screws. The 2-1/2" arrow prongs are bent away from the wall at a 90 degree angle. Insulation is then generally pushed onto the arrow prongs. The 100' rolls of Insul-Hold can be cut into any individual length. Often times they are cut into 36" or 48" strips.

### INSUL-HOLD SPECIAL PRICING

**200 Rolls or Less**

**200 - 1,000 Rolls**

**1,000 - 5,000 Rolls**

**More than 5,000 Special Pricing**

**1-207-465-9066**



Made in the U.S.A.  
with American Steel

### How does Insul-Hold increase R Value?

Insul-Hold does this simply by allowing the insulation to fill the entire wall and joint cavity. When insulating industrial metal walls one of the large hurdles is maintaining a proper R value because metal reduces the R value of the insulation by as much as 50%. By using Insul-Hold builders are sure to get the maximum R value available.

### Why is Insul-Hold considered a "green product"?

Insul-Hold is a green product because it contributes to the overall green building movement.

### What is Insul-Hold made out of and how is it packaged?

Insul-Hold is fabricated with 20 gauge galvanized metal with a width of 1". It is packaged in self dispensing boxes in 100' rolls.



### Where can Insul-Hold be used?

Insul-Hold can be used anywhere insulation is used. It can be used in inside and outside walls, ceilings, basements, and crawl spaces. It can be used in commercial or residential structures. It is ideal for industrial steel buildings. It is primarily used at the new construction phase, however it has grown over the years to be used for retro-fit projects. This trend is continuing as efficiency requirements become more important.

### Where can Insul-Hold be purchased?

Insul-Hold is manufactured in the USA by the finest Maine craftsman. It is a product of JR Metal Frames in Belgrade, Maine. Please contact us at 207-465-9066. Visit us at

Insul-Hold.com. The factory address is 287 Oakland Road Belgrade, Maine 04917. Insul-Hold is shipped all over the world.

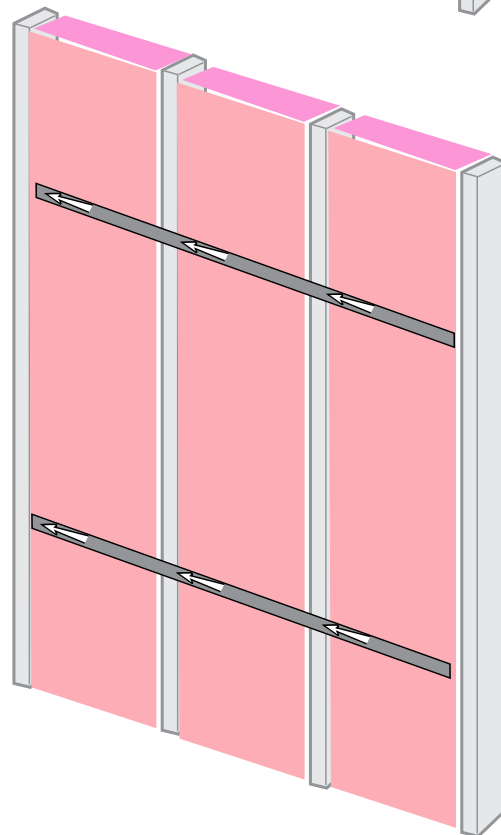
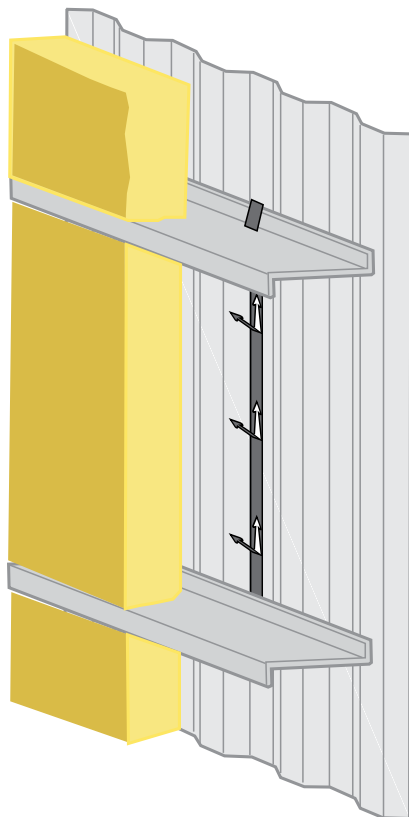
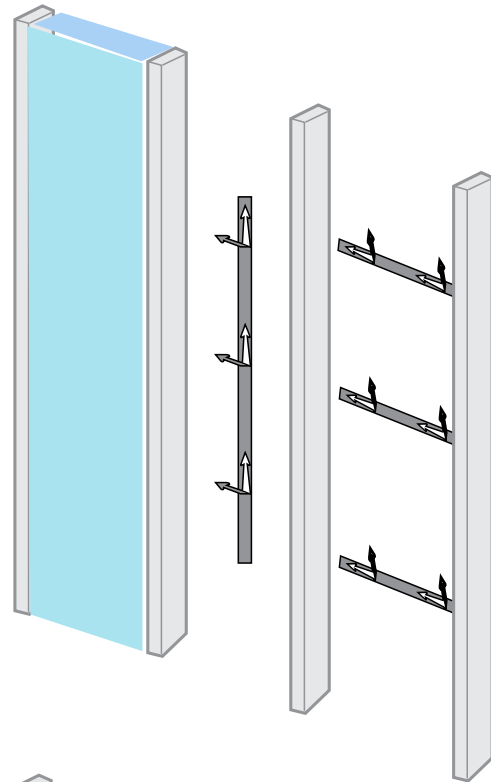
# INSUL-HOLD

**INSULATION SUPPORT SYSTEM A GREEN BUILDING SOLUTION**

PATENTED

## Is Insul-Hold used Horizontally or Vertically?

Insul-Hold is used both horizontally and vertically. It was originally intended to be used horizontally. In this application the Insul-Hold is installed 6" down from the top of the insulation line. It is then hung every 4' thereafter. Insul-Hold is also widely used in the vertical application by hanging vertically in sections and bending the arrow prongs at a 45 degree angle. The insulation is pushed onto the arrow prongs in the same fashion. Insul-Hold is primarily used to hold rigid or batt insulation.



**P.O. Box 503  
287 Oakland Road  
Belgrade, Maine 04917**